



SZABO SCANDIC

Part of Europa Biosite

Produktinformation



Forschungsprodukte & Biochemikalien



Zellkultur & Verbrauchsmaterial



Diagnostik & molekulare Diagnostik



Laborgeräte & Service

Weitere Information auf den folgenden Seiten!
See the following pages for more information!



Lieferung & Zahlungsart

siehe unsere [Liefer- und Versandbedingungen](#)

Zuschläge

- Mindermengenzuschlag
- Trockeneiszuschlag
- Gefahrgutzuschlag
- Expressversand

SZABO-SCANDIC HandelsgmbH

Quellenstraße 110, A-1100 Wien

T. +43(0)1 489 3961-0

F. +43(0)1 489 3961-7

mail@szabo-scandic.com

www.szabo-scandic.com

[linkedin.com/company/szaboscandic](https://www.linkedin.com/company/szaboscandic) 

MAGOH monoclonal antibody (M01), clone 6E11

Catalog # : H00004116-M01

規格 : [100 ug]

[List All](#)

Specification

Product Description:	Mouse monoclonal antibody raised against a partial recombinant MAGOH.
Immunogen:	MAGOH (NP_002361, 1 a.a. ~ 110 a.a) partial recombinant protein with GST tag. MW of the GST tag alone is 26 KDa.
Sequence:	MESDFYLRYVGHKGFHEFLEFEFRPDGKLRVYANNVNDVMIRKE AYVHKSVMLEELKRIIDDSEITKEDDALWPPDRVGRQLELVIGDEHISFTT SKIGSLIDV
Host:	Mouse
Reactivity:	Human
Isotype:	IgG1 Kappa

Quality Control Testing: Antibody Reactive Against Recombinant Protein.



Western Blot detection against Immunogen (37.84 KDa) .

Storage Buffer: In 1x PBS, pH 7.4

Storage Instruction: Store at -20°C or lower. Aliquot to avoid repeated freezing and thawing.

MSDS: [Download](#)

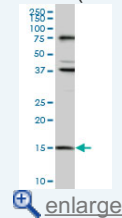
Datasheet: [Download](#)

Applications

Western Blot (Cell lysate)

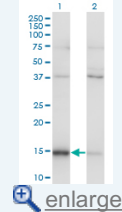
Application Image

Western Blot (Cell lysate)



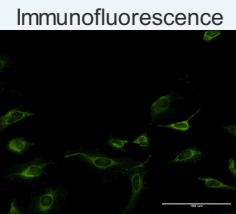
[enlarge](#)

Western Blot (Transfected lysate)



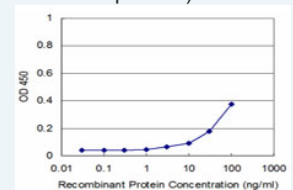
[enlarge](#)

Western Blot (Recombinant protein)



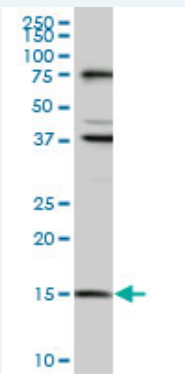
[enlarge](#)

Sandwich ELISA (Recombinant protein)



[enlarge](#)

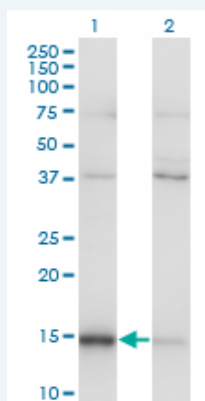
ELISA



MAGOH monoclonal antibody (M01), clone 6E11. Western Blot analysis of MAGOH expression in HeLa (Cat # L013V1).

 [Protocol Download](#)

Western Blot (Transfected lysate)



Western Blot analysis of MAGOH expression in transfected 293T cell line by MAGOH monoclonal antibody (M01), clone 6E11.

Lane 1: MAGOH transfected lysate(17.2 KDa).

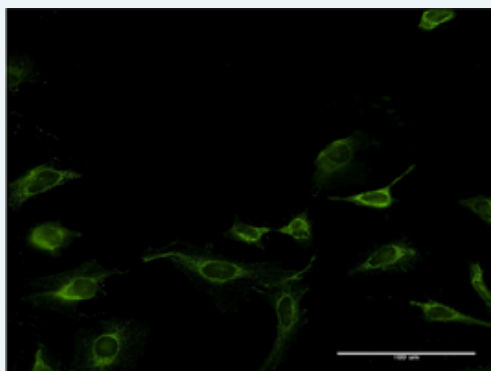
Lane 2: Non-transfected lysate.


 [Protocol Download](#)

Western Blot (Recombinant protein)

 [Protocol Download](#)

Immunofluorescence

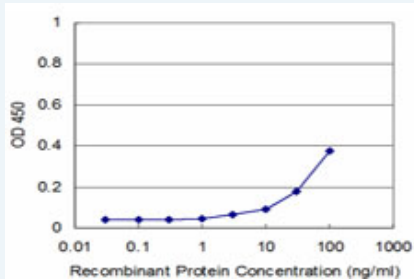


 [enlarge this image](#)

Immunofluorescence of monoclonal antibody to MAGOH on HeLa cell . [antibody concentration 10 ug/ml]

 [Protocol Download](#)

Sandwich ELISA (Recombinant protein)



Detection limit for recombinant GST tagged MAGOH is approximately 3ng/ml as a capture antibody.

 [Protocol Download](#)

ELISA

Gene Information

Entrez GeneID: [4116](#)

GeneBank [NM_002370](#)

Accession#:

Protein [NP_002361](#)

Accession#:

Gene Name: MAGOH

Gene Alias: MAGOHA

Gene Description: mago-nashi homolog, proliferation-associated (Drosophila)

Omim ID: [602603](#)

Gene Ontology: [Hyperlink](#)

Gene Summary: Drosophila that have mutations in their mago nashi (grandchildless) gene produce progeny with defects in germlasm assembly and germline development. This gene encodes the mammalian mago nashi homolog. In mammals, mRNA expression is not limited to the germ plasm, but is expressed ubiquitously in adult tissues and can be induced by serum stimulation of quiescent fibroblasts. [provided by RefSeq]

Other Designations: OTTHUMP00000010485,mago-nashi homolog