



# SZABO SCANDIC

Part of Europa Biosite

## Produktinformation



Forschungsprodukte & Biochemikalien



Zellkultur & Verbrauchsmaterial



Diagnostik & molekulare Diagnostik



Laborgeräte & Service

Weitere Information auf den folgenden Seiten!  
See the following pages for more information!



### Lieferung & Zahlungsart

siehe unsere [Liefer- und Versandbedingungen](#)

### Zuschläge

- Mindermengenzuschlag
- Trockeneiszuschlag
- Gefahrgutzuschlag
- Expressversand

### SZABO-SCANDIC HandelsgmbH

Quellenstraße 110, A-1100 Wien

T. +43(0)1 489 3961-0

F. +43(0)1 489 3961-7

[mail@szabo-scandic.com](mailto:mail@szabo-scandic.com)

[www.szabo-scandic.com](http://www.szabo-scandic.com)

[linkedin.com/company/szaboscandic](https://www.linkedin.com/company/szaboscandic) 

## MAGOH 293T Cell Transient Overexpression Lysate(Denatured)

Catalog # : H00004116-T01

規格 : [ 100 uL ]

[List All](#)

### Specification

**Transfected Cell Line:** 293T

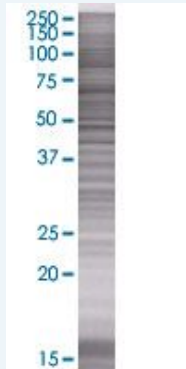
**Plasmid:** pCMV-MAGOH full-length

**Host:** Human

**Theoretical MW (kDa):** 16.17

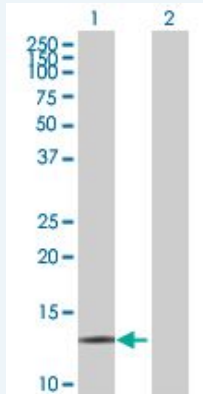
**Quality Control Testing:** Transient overexpression cell lysate was tested with Anti-MAGOH antibody ([H00004116-B01](#)) by Western Blots.

#### SDS-PAGE Gel



MAGOH transfected lysate.

#### Western Blot



Lane 1: MAGOH transfected lysate ( 16.17 KDa)

Lane 2: Non-transfected lysate.

**Storage Buffer:** 1X Sample Buffer (50 mM Tris-HCl, 2% SDS, 10% glycerol, 300 mM 2-mercaptoethanol, 0.01% Bromophenol blue)

**Storage Instruction:** Store at -80°C. Aliquot to avoid repeated freezing and thawing.

**MSDS:**  [Download](#)

### Applications

### Application Image

Western Blot

## Western Blot

### Gene Information

Entrez GeneID: [4116](#)

GeneBank Accession#: [NM\\_002370.2](#)

Protein Accession#: [NP\\_002361.1](#)

Gene Name: MAGOH

Gene Alias: MAGOHA

Gene Description: mago-nashi homolog, proliferation-associated (Drosophila)

Omim ID: [602603](#)

Gene Ontology: [Hyperlink](#)

**Gene Summary:** Drosophila that have mutations in their mago nashi (grandchildless) gene produce progeny with defects in germline assembly and germline development. This gene encodes the mammalian mago nashi homolog. In mammals, mRNA expression is not limited to the germline, but is expressed ubiquitously in adult tissues and can be induced by serum stimulation of quiescent fibroblasts. [provided by RefSeq]

Other Designations: OTTHUMP00000010485,mago-nashi homolog