



SZABO SCANDIC

Part of Europa Biosite

Produktinformation



Forschungsprodukte & Biochemikalien



Zellkultur & Verbrauchsmaterial



Diagnostik & molekulare Diagnostik



Laborgeräte & Service

Weitere Information auf den folgenden Seiten!
See the following pages for more information!



Lieferung & Zahlungsart

siehe unsere [Liefer- und Versandbedingungen](#)

Zuschläge

- Mindermengenzuschlag
- Trockeneiszuschlag
- Gefahrgutzuschlag
- Expressversand

SZABO-SCANDIC HandelsgmbH

Quellenstraße 110, A-1100 Wien

T. +43(0)1 489 3961-0

F. +43(0)1 489 3961-7

mail@szabo-scandic.com

www.szabo-scandic.com

[linkedin.com/company/szaboscandic](https://www.linkedin.com/company/szaboscandic) 

MAK 293T Cell Transient Overexpression Lysate(Denatured)

Catalog # : H00004117-T01

規格 : [100 uL]

[List All](#)

Specification

Transfected Cell Line: 293T

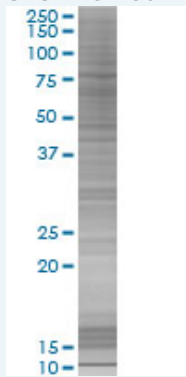
Plasmid: pCMV-MAK full-length

Host: Human

Theoretical MW (kDa): 52.6

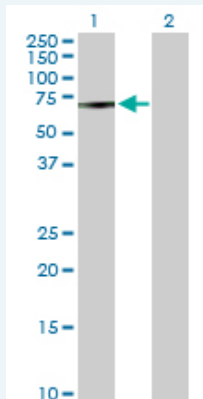
Quality Control Testing: Transient overexpression cell lysate was tested with Anti-MAK antibody (H00004117-D01P) by Western Blots.

SDS-PAGE Gel



MAK transfected lysate.

Western Blot



Lane 1: MAK transfected lysate (52.60 KDa)

Lane 2: Non-transfected lysate.

Storage Buffer: 1X Sample Buffer (50 mM Tris-HCl, 2% SDS, 10% glycerol, 300 mM 2-mercaptoethanol, 0.01% Bromophenol blue)

Storage Instruction: Store at -80°C. Aliquot to avoid repeated freezing and thawing.

MSDS:  [Download](#)

Applications

Application Image

Western Blot

Western Blot

Gene Information

Entrez GeneID: [4117](#)

GeneBank Accession#: [BC039825.1](#)

Protein Accession#: [AAH39825.1](#)

Gene Name: MAK

Gene Alias: dJ417M14.2

Gene Description: male germ cell-associated kinase

Omim ID: [154235](#)

Gene Ontology: [Hyperlink](#)

Gene Summary: The product of this gene is a serine/threonine protein kinase related to kinases involved in cell cycle regulation. It is expressed almost exclusively in the testis, primarily in germ cells. Studies of the mouse and rat homologs have localized the kinase to the chromosomes during meiosis in spermatogenesis, specifically to the synaptonemal complex that exists while homologous chromosomes are paired. There is, however, a study of the mouse homolog that has identified high levels of expression in developing sensory epithelia so its function may be more generalized. [provided by RefSeq]

Other Designations: OTTHUMP00000016025,serine/threonine protein kinase MAK