



SZABO SCANDIC

Part of Europa Biosite

Produktinformation



Forschungsprodukte & Biochemikalien



Zellkultur & Verbrauchsmaterial



Diagnostik & molekulare Diagnostik



Laborgeräte & Service

Weitere Information auf den folgenden Seiten!
See the following pages for more information!



Lieferung & Zahlungsart

siehe unsere [Liefer- und Versandbedingungen](#)

Zuschläge

- Mindermengenzuschlag
- Trockeneiszuschlag
- Gefahrgutzuschlag
- Expressversand

SZABO-SCANDIC HandelsgmbH

Quellenstraße 110, A-1100 Wien

T. +43(0)1 489 3961-0

F. +43(0)1 489 3961-7

mail@szabo-scandic.com

www.szabo-scandic.com

[linkedin.com/company/szaboscandic](https://www.linkedin.com/company/szaboscandic) 

MAN2B1 293T Cell Transient Overexpression Lysate(Denatured)

Catalog # : H00004125-T01

規格 : [100 uL]

List All

Specification

Transfected Cell Line: 293T

Plasmid: pCMV-MAN2B1 full-length

Host: Human

Theoretical MW (kDa): 111.32

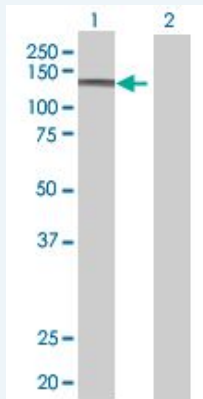
Quality Control Testing: Transient overexpression cell lysate was tested with Anti-MAN2B1 antibody (H00004125-B01) by Western Blots.

SDS-PAGE Gel



MAN2B1 transfected lysate.

Western Blot



Lane 1: MAN2B1 transfected lysate (111.32 KDa)

Lane 2: Non-transfected lysate.

Storage Buffer: 1X Sample Buffer (50 mM Tris-HCl, 2% SDS, 10% glycerol, 300 mM 2-mercaptoethanol, 0.01% Bromophenol blue)

Storage Instruction: Store at -80°C. Aliquot to avoid repeated freezing and thawing.

MSDS:  [Download](#)

Applications

Western Blot

Gene Information

Entrez GeneID: [4125](#)

GeneBank Accession#: [NM_000528.2](#)

Protein Accession#: [NP_000519.2](#)

Gene Name: MAN2B1

Gene Alias: LAMAN,MANB

Gene Description: mannosidase, alpha, class 2B, member 1

Omim ID: [248500](#), [609458](#)

Gene Ontology: [Hyperlink](#)

Gene Summary: This gene encodes an enzyme that hydrolyzes terminal, non-reducing alpha-D-mannose residues in alpha-D-mannosides. Its activity is necessary for the catabolism of N-linked carbohydrates released during glycoprotein turnover and it is member of family 38 of glycosyl hydrolases. The full length protein is processed in two steps. First, a 49 aa leader sequence is cleaved off and the remainder of the protein is processed into 3 peptides of 70 kDa, 42 kDa (D) and 13/15 kDa (E). Next, the 70 kDa peptide is further processed into three peptides (A, B and C). The A, B and C peptides are disulfide-linked. Defects in this gene have been associated with lysosomal alpha-mannosidosis. [provided by RefSeq]

Other Designations: lysosomal acid alpha-mannosidase, mannosidase, alpha B, lysosomal

Gene Pathway

[Lysosome](#) [Other glycan degradation](#)