



SZABO SCANDIC

Part of Europa Biosite

Produktinformation



Forschungsprodukte & Biochemikalien



Zellkultur & Verbrauchsmaterial



Diagnostik & molekulare Diagnostik



Laborgeräte & Service

Weitere Information auf den folgenden Seiten!
See the following pages for more information!



Lieferung & Zahlungsart

siehe unsere [Liefer- und Versandbedingungen](#)

Zuschläge

- Mindermengenzuschlag
- Trockeneiszuschlag
- Gefahrgutzuschlag
- Expressversand

SZABO-SCANDIC HandelsgmbH

Quellenstraße 110, A-1100 Wien

T. +43(0)1 489 3961-0

F. +43(0)1 489 3961-7

mail@szabo-scandic.com

www.szabo-scandic.com

[linkedin.com/company/szaboscandic](https://www.linkedin.com/company/szaboscandic) 



MAOB purified MaxPab rabbit polyclonal antibody (D01P) MaxPab®

Catalog # : H00004129-D01P

規格 : [100 ug]

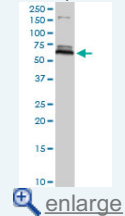
[List All](#)

Specification

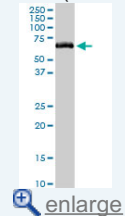
Product Description:	Rabbit polyclonal antibody raised against a full-length human MAOB protein.
Immunogen:	MAOB (NP_000889.3, 1 a.a. ~ 520 a.a) full-length human protein.
Sequence:	MSNKCDVVVGGGSGMAAKLLHDSGLNWWLEARDRVGGRTYTLRN QKVKYVDLGGSYVGPTQNRILRLAKELGLETYKNEVERLIHVKGKSY FRGPFPPVWNPITYLDHNNFWRTMDDMGREIPSDAPWKAPLAEEDNM TMKELLDKLCWTESAKQLATLFVNLCVTAETHEVSALWFLWYVKQCGG TTRIISTTNGGQERKFVGGSGQVSERIMDLLGDRVKLERPVIYDQTR EN VLVETLNHEMYEAKYVISAIPPTLGMKIHFNPPLPMRNQMITRVPLG SVIK CIVYYKEPFWRKKDYCGTMIIDGEEAPVAYTLDDTKPEGNYA AIMGFILAH KARKLARLTKEERLKKLCELYAKVLSLEALEPVIHVEEKWCEE EQYSGG CYTTYFPPGILTQYGRVLRQPVDRIYFAGTETATHWSGYMEGA VEAGE RAAREILHAMGKIPEDIWQSEPEVDVPAQPITTTFLERHLPSV PGLRLI GLTTIFSATALGFLAHRGLLVRV
Host:	Rabbit
Reactivity:	Human, Mouse
Quality Control Testing:	Antibody reactive against mammalian transfected lysate.
Storage Buffer:	In 1x PBS, pH 7.4
Storage Instruction:	Store at -20°C or lower. Aliquot to avoid repeated freezing and thawing.
MSDS:	 Download
Datasheet:	 Download

Application Image

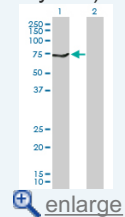
Western Blot (Tissue lysate)



Western Blot (Tissue lysate)

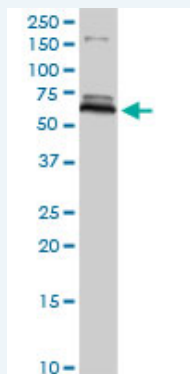


Western Blot (Transfected lysate)



Applications

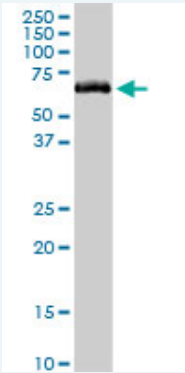
Western Blot (Tissue lysate)




MAOB MaxPab rabbit polyclonal antibody. Western Blot analysis of MAOB expression in human liver.

 [Protocol Download](#)

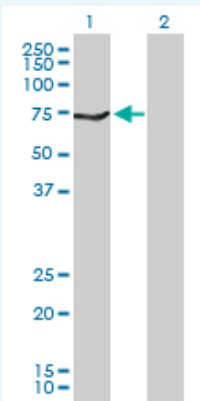
Western Blot (Tissue lysate)



MAOB MaxPab rabbit polyclonal antibody. Western Blot analysis of MAOB expression in mouse liver.

 [Protocol Download](#)

Western Blot (Transfected lysate)



Western Blot analysis of MAOB expression in transfected 293T cell line ([H00004129-T02](#)) by MAOB MaxPab polyclonal antibody.

Lane 1: MAOB transfected lysate(58.80 KDa).

Lane 2: Non-transfected lysate.

 [Protocol Download](#)

Gene Information

Entrez GeneID: [4129](#)

GeneBank [NM_000898](#)

Accession#:

Protein [NP_000889.3](#)

Accession#:

Gene Name: MAOB

Gene Alias: MGC26382

Gene monoamine oxidase B

Description:

Omim ID: [309860](#)

Gene Ontology: [Hyperlink](#)

Gene Summary: The protein encoded by this gene belongs to the flavin monoamine oxidase family. It is an enzyme located in the mitochondrial outer membrane. It catalyzes the oxidative deamination of biogenic and xenobiotic amines and plays an important role in the metabolism of neuroactive and vasoactive amines in the central nervous system and peripheral tissues. This protein preferentially degrades benzylamine

and phenylethylamine. [provided by RefSeq]

Other MAO, brain, MAO, platelet, adrenalin oxidase, tyramine oxidase

Designations:

Gene Pathway

[Arginine and proline metabolism](#) [Drug metabolism - cytochrome P450](#)
[Glycine, serine and threonine metabolism](#) [Histidine metabolism](#) [Metabolic pathways](#)
[Phenylalanine metabolism](#) [Tryptophan metabolism](#) [Tyrosine metabolism](#)

Related Disease

[Alcoholism](#) [Alzheimer Disease](#) [Alzheimer disease](#) [Asperger Syndrome](#)
[Attention Deficit Disorder with Hyperactivity](#) [Autistic Disorder](#) [Basal Ganglia Diseases](#)
[Body Weight](#) [Cardiovascular Diseases](#) [Cognition](#) [Combat Disorders](#) [Conduct Disorder](#)
[Depressive Disorder, Major](#) [Diabetes Mellitus, Type 2](#) [Disease Models, Animal](#)
[Disease Progression](#) [Dyskinesia, Drug-Induced](#) [Edema](#) [Fatigue Syndrome, Chronic](#)

... see more

[服務條款](#) | [隱私權政策](#) | [著作及商標](#) | [網站地圖](#)

©2016 亞諾法生技股份有限公司 Abnova Corporation. 版權所有.