



SZABO SCANDIC

Part of Europa Biosite

Produktinformation



Forschungsprodukte & Biochemikalien



Zellkultur & Verbrauchsmaterial



Diagnostik & molekulare Diagnostik



Laborgeräte & Service

Weitere Information auf den folgenden Seiten!
See the following pages for more information!



Lieferung & Zahlungsart

siehe unsere [Liefer- und Versandbedingungen](#)

Zuschläge

- Mindermengenzuschlag
- Trockeneiszuschlag
- Gefahrgutzuschlag
- Expressversand

SZABO-SCANDIC HandelsgmbH

Quellenstraße 110, A-1100 Wien

T. +43(0)1 489 3961-0

F. +43(0)1 489 3961-7

mail@szabo-scandic.com

www.szabo-scandic.com

[linkedin.com/company/szaboscandic](https://www.linkedin.com/company/szaboscandic) 

MAP2 MaxPab mouse polyclonal antibody (B01) MaxPab®

Catalog # : H00004133-B01

規格 : [50 uL]

[List All](#)

Specification

Product Description: Mouse polyclonal antibody raised against a full-length human MAP2 protein.

Immunogen: MAP2 (NP_114033.2, 1 a.a. ~ 471 a.a) full-length human protein.

Sequence:
 MADERKDEAKAPHWTSAPL TEASAHSHPPEIKDQGGAGEGLVRSANGF
 PYREDEEGAFGEHGSQGTYSNTKENGINGELTSADRETAEEVSARIVQV
 VTAEAVAVLKGEQEKEAQHKDQTAALPLAAEETANLPPSPPPSPASEQT
 VTVEEAAGGESALAPSVFKQAKDKVSDGVTKSPEKRSSLPRPSSILPPR
 RGVSGDRDENSFSLNSSISSARRTRRSEPIRRAGKSGTSTPTTPGSTAI
 TPGTPPSYSSRTPGTGTPSYPRTPHTPGTPKSAILVPSEKKVAIIRTPPK
 SPATPKQLRLINQLPDLKNVSKIGSTDNIKYQPKGGQVQIVTKKIDLSHV
 TSKCGSLKNIRHRPGGGRVKIESVKLDFKEKAQAKVGSLDNAHHVPGGG
 NVKIDSQKLNFRHAKARVDHGAEITQSPGRSSVASPRRLSNVSSSGSIN
 LLESPQLATLAEDVTAALAKQGL

Host: Mouse

Reactivity: Human

Quality Control Testing: Antibody reactive against mammalian transfected lysate.

Storage Buffer: No additive

Storage Instruction: Store at -20°C or lower. Aliquot to avoid repeated freezing and thawing.

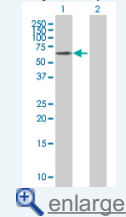
Note: For IHC and IF applications, antibody purification with Protein A will be needed prior to use.

MSDS: [Download](#)

Datasheet: [Download](#)

Application Image

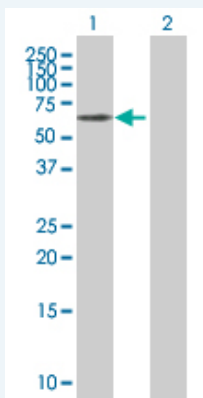
Western Blot (Transfected lysate)



[enlarge](#)

Applications

Western Blot (Transfected lysate)



Western Blot analysis of MAP2 expression in transfected 293T cell line (H00004133-T01) by MAP2 MaxPab polyclonal antibody.

Lane 1: MAP2 transfected lysate(51.81 KDa).
Lane 2: Non-transfected lysate.

 [Protocol Download](#)

Gene Information

Entrez GeneID: [4133](#)

**GeneBank
Accession#:** [NM_031845.2](#)

**Protein
Accession#:** [NP_114033.2](#)

Gene Name: MAP2

Gene Alias: DKFZp686I2148,MAP2A,MAP2B,MAP2C

**Gene
Description:** microtubule-associated protein 2

Omim ID: [157130](#)

Gene Ontology: [Hyperlink](#)

Gene Summary: This gene encodes a protein that belongs to the microtubule-associated protein family. The proteins of this family are thought to be involved in microtubule assembly, which is an essential step in neurogenesis. The products of similar genes in rat and mouse are neuron-specific cytoskeletal proteins that are enriched in dendrites, implicating a role in determining and stabilizing dendritic shape during neuron development. A number of alternatively spliced variants encoding distinct isoforms have been described. [provided by RefSeq]

**Other
Designations:** OTTHUMP00000163916

Related Disease

[Cardiovascular Diseases](#) [Diabetes Mellitus, Type 2](#) [Edema](#) [Tobacco Use Disorder](#)

[服務條款](#) | [隱私權政策](#) | [著作及商標](#) | [網站地圖](#)

©2016 亞諾法生技股份有限公司 Abnova Corporation. 版權所有.