



SZABO SCANDIC

Part of Europa Biosite

Produktinformation



Forschungsprodukte & Biochemikalien



Zellkultur & Verbrauchsmaterial



Diagnostik & molekulare Diagnostik



Laborgeräte & Service

Weitere Information auf den folgenden Seiten!
See the following pages for more information!



Lieferung & Zahlungsart

siehe unsere [Liefer- und Versandbedingungen](#)

Zuschläge

- Mindermengenzuschlag
- Trockeneiszuschlag
- Gefahrgutzuschlag
- Expressversand

SZABO-SCANDIC HandelsgmbH

Quellenstraße 110, A-1100 Wien

T. +43(0)1 489 3961-0

F. +43(0)1 489 3961-7

mail@szabo-scandic.com

www.szabo-scandic.com

[linkedin.com/company/szaboscandic](https://www.linkedin.com/company/szaboscandic) 

MAP4 monoclonal antibody (M03), clone 7C9

Catalog # : H00004134-M03

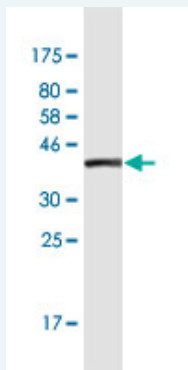
規格 : [100 ug]

List All

Specification

Product Description:	Mouse monoclonal antibody raised against a full-length recombinant MAP4.
Immunogen:	MAP4 (NP_112147.2, 1 a.a. ~ 99 a.a) full-length recombinant protein with GST tag. MW of the GST tag alone is 26 KDa.
Sequence:	MADLSLADALTEPSPDIEGEIKRDFIATLEAEAFDDVVGETVGKTDYIPLL DVDEKTGNSESKKKPCSETSQIEDTPSSKPTLLANGGHGVEGSDTTEA
Host:	Mouse
Reactivity:	Human
Isotype:	IgG2a Kappa

Quality Control Testing: Antibody Reactive Against Recombinant Protein.



Western Blot detection against Immunogen (36.8 KDa) .

Storage Buffer: In 1x PBS, pH 7.4

Storage Instruction: Store at -20°C or lower. Aliquot to avoid repeated freezing and thawing.

MSDS: [Download](#)

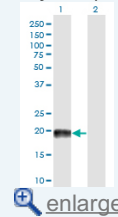
Datasheet: [Download](#)

Applications

Western Blot (Transfected lysate)

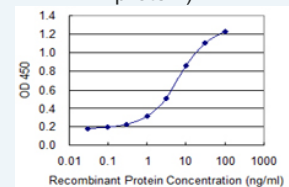
Application Image

Western Blot (Transfected lysate)

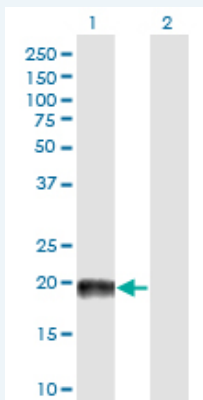


Western Blot (Recombinant protein)

Sandwich ELISA (Recombinant protein)



ELISA



Western Blot analysis of MAP4 expression in transfected 293T cell line by MAP4 monoclonal antibody (M03), clone 7C9.

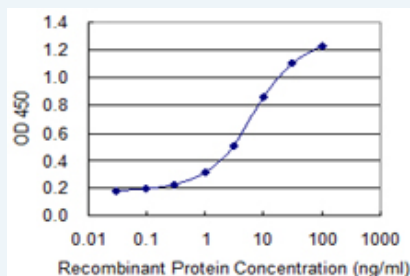
Lane 1: MAP4 transfected lysate(10.4 KDa).
Lane 2: Non-transfected lysate.

[Protocol Download](#)

Western Blot (Recombinant protein)

[Protocol Download](#)

Sandwich ELISA (Recombinant protein)



Detection limit for recombinant GST tagged MAP4 is 0.1 ng/ml as a capture antibody.

[Protocol Download](#)

ELISA

Gene Information

Entrez GeneID: [4134](#)

GeneBank [NM_030885.2](#)

Accession#:

Protein [NP_112147.2](#)

Accession#:

Gene Name: MAP4

Gene Alias: DKFZp779A1753,MGC8617

Gene Description: microtubule-associated protein 4

Description:

Omim ID: [157132](#)

Gene Ontology: [Hyperlink](#)

Gene Summary: The protein encoded by this gene is a major non-neuronal microtubule-associated protein. This protein contains a domain similar to the microtubule-binding domains of neuronal microtubule-associated protein (MAP2) and microtubule-associated protein tau (MAPT/TAU). This protein promotes microtubule assembly, and has been shown to counteract destabilization of interphase microtubule catastrophe

promotion. Cyclin B was found to interact with this protein, which targets cell division cycle 2 (CDC2) kinase to microtubules. The phosphorylation of this protein affects microtubule properties and cell cycle progression. Multiple transcript variants encoding different isoforms have been found for this gene. [provided by RefSeq

Other -
Designations:

Related Disease

[Disease Progression](#) [Disease Susceptibility](#) [Genetic Predisposition to Disease](#)
[HIV Infections](#) [Schizophrenia](#) [Schizophrenia](#)

[服務條款](#) | [隱私權政策](#) | [著作及商標](#) | [網站地圖](#)

©2016 亞諾法生技股份有限公司 Abnova Corporation. 版權所有.