



# SZABO SCANDIC

Part of Europa Biosite

## Produktinformation



Forschungsprodukte & Biochemikalien



Zellkultur & Verbrauchsmaterial



Diagnostik & molekulare Diagnostik



Laborgeräte & Service

Weitere Information auf den folgenden Seiten!  
See the following pages for more information!



### Lieferung & Zahlungsart

siehe unsere [Liefer- und Versandbedingungen](#)

### Zuschläge

- Mindermengenzuschlag
- Trockeneiszuschlag
- Gefahrgutzuschlag
- Expressversand

### SZABO-SCANDIC HandelsgmbH

Quellenstraße 110, A-1100 Wien

T. +43(0)1 489 3961-0

F. +43(0)1 489 3961-7

[mail@szabo-scandic.com](mailto:mail@szabo-scandic.com)

[www.szabo-scandic.com](http://www.szabo-scandic.com)

[linkedin.com/company/szaboscandic](https://www.linkedin.com/company/szaboscandic) 

## MAPT monoclonal antibody (M09), clone 3A16

Catalog # : H00004137-M09

規格 : [ 100 ug ]

[List All](#)

### Specification

**Product Description:** Mouse monoclonal antibody raised against a partial recombinant MAPT.

**Immunogen:** MAPT (NP\_058519.2, 167 a.a. ~ 266 a.a) partial recombinant protein with GST tag. MW of the GST tag alone is 26 KDa.

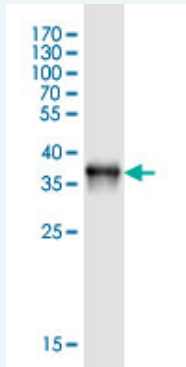
**Sequence:** TRQPSGTGPEDETEGGRHAPPELLKHQLLGDLHQEGPPLKGAGGKERPG  
SKEEVDEDRDVESSPQDSPPSKASPAQDGRPPQTAAREATSIPGFPAE  
GAIP

**Host:** Mouse

**Reactivity:** Human

**Isotype:** IgG1 Kappa

**Quality Control Testing:** Antibody Reactive Against Recombinant Protein.



Western Blot detection against Immunogen (36.74 KDa) .

**Storage Buffer:** In 1x PBS, pH 7.4

**Storage Instruction:** Store at -20°C or lower. Aliquot to avoid repeated freezing and thawing.

**Datasheet:** [Download](#)

### Applications

**Western Blot (Recombinant protein)**

[Protocol Download](#)

**ELISA**

### Gene Information

**Entrez GeneID:** [4137](#)

**GeneBank Accession#:** [NM\\_016835](#)

### Application Image

Western Blot (Recombinant protein)

ELISA

**Protein** [NP\\_058519.2](#)

**Accession#:**

**Gene Name:** MAPT

**Gene Alias:** DDPAC,FLJ31424,FTDP-17,MAPTL,MGC138549,MSTD,MTBT1,MTBT2,PPND,TAU

**Gene Description:** microtubule-associated protein tau

**Omim ID:** [157140](#), [168600](#), [172700](#), [260540](#), [600274](#), [601104](#)

**Gene Ontology:** [Hyperlink](#)

**Gene Summary:** This gene encodes the microtubule-associated protein tau (MAPT) whose transcript undergoes complex, regulated alternative splicing, giving rise to several mRNA species. MAPT transcripts are differentially expressed in the nervous system, depending on stage of neuronal maturation and neuron type. MAPT gene mutations have been associated with several neurodegenerative disorders such as Alzheimer's disease, Pick's disease, frontotemporal dementia, cortico-basal degeneration and progressive supranuclear palsy. [provided by RefSeq]

**Other Designations:** G protein beta1/gamma2 subunit-interacting factor 1,microtubule-associated protein tau, isoform 4

#### Gene Pathway

[Alzheimer's disease MAPK signaling pathway](#)

#### Related Disease

[Alzheimer Disease](#) [Alzheimer disease](#) [Amyloidosis](#) [Amyotrophic Lateral Sclerosis](#) [Amyotrophic lateral sclerosis](#) [Aphasia](#), [Primary Progressive](#) [Atherosclerosis](#) [Atherosclerosis](#) [Atrophy](#) [Autistic Disorder](#) [Brain Concussion](#) [Brain Diseases](#) [Brain Ischemia](#) [Cardiovascular Diseases](#) [Carotid Stenosis](#) [Cleft Lip](#) [Cleft Palate](#) [Cognition](#) [Cognition Disorders](#)

... see more