



# SZABO SCANDIC

Part of Europa Biosite

## Produktinformation



Forschungsprodukte & Biochemikalien



Zellkultur & Verbrauchsmaterial



Diagnostik & molekulare Diagnostik



Laborgeräte & Service

Weitere Information auf den folgenden Seiten!  
See the following pages for more information!



### Lieferung & Zahlungsart

siehe unsere [Liefer- und Versandbedingungen](#)

### Zuschläge

- Mindermengenzuschlag
- Trockeneiszuschlag
- Gefahrgutzuschlag
- Expressversand

### SZABO-SCANDIC HandelsgmbH

Quellenstraße 110, A-1100 Wien

T. +43(0)1 489 3961-0

F. +43(0)1 489 3961-7

[mail@szabo-scandic.com](mailto:mail@szabo-scandic.com)

[www.szabo-scandic.com](http://www.szabo-scandic.com)

[linkedin.com/company/szaboscandic](https://www.linkedin.com/company/szaboscandic) 

## MAT1A (Human) IP-WB Antibody Pair

Catalog # : H00004143-PW1

規格 : [ 1 Set ]

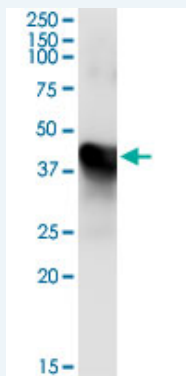
[List All](#)

### Specification

**Product Description:** This IP-WB antibody pair set comes with one antibody for immunoprecipitation and another to detect the precipitated protein in western blot.

**Reactivity:** Human

**Quality Control Testing:** Immunoprecipitation-Western Blot (IP-WB)



Immunoprecipitation of MAT1A transfected lysate using mouse monoclonal anti-MAT1A and Protein A Magnetic Bead ([U000Z](#)), and immunoblotted with mouse monoclonal anti-MAT1A.

**Supplied Product:** Antibody pair set content:  
1. Antibody pair for IP: mouse monoclonal anti-MAT1A (300 ug)  
2. Antibody pair for WB: mouse monoclonal anti-MAT1A (50 ug)

**Storage Instruction:** Store reagents of the antibody pair set at -20°C or lower. Please aliquot to avoid repeated freeze thaw cycle. Reagents should be returned to -20°C storage immediately after use.

**MSDS:**  [Download](#)

### Applications

**Immunoprecipitation-Western Blot**

 [Protocol Download](#)

### Gene Information

**Entrez GeneID:** [4143](#)

**Gene Name:** MAT1A

**Gene Alias:** MAT, MATA1, SAMS, SAMS1

**Gene Description:** methionine adenosyltransferase I, alpha

**Omim ID:** [250850](#), [610550](#)

**Gene Ontology:** [Hyperlink](#)

### Application Image

Immunoprecipitation-Western Blot

---

**Gene Summary:** This gene catalyzes a two-step reaction that involves the transfer of the adenosyl moiety of ATP to methionine to form S-adenosylmethionine and triphosphosphate, which is subsequently cleaved to PPI and Pi. S-adenosylmethionine is the source of methyl groups for most biological methylations. The encoded protein is found as a homotetramer (MAT I) or a homodimer (MAT III) whereas a third form, MAT II (gamma), is encoded by the MAT2A gene. Mutations in this gene are associated with methionine adenosyltransferase deficiency. [provided by RefSeq]

---

**Other Designations:** OTTHUMP00000019971,S-adenosylmethionine synthetase

---

### Gene Pathway

---

[Biosynthesis of plant hormones](#) [Cysteine and methionine metabolism](#) [Metabolic pathways](#)  
[Selenoamino acid metabolism](#)

### Related Disease

---

[Alzheimer Disease](#) [Cardiovascular Diseases](#) [Cleft Lip](#) [Cleft Palate](#) [Cognition Disorders](#)  
[Diabetes Mellitus, Type 2](#) [DNA Damage](#) [Edema](#) [Genetic Predisposition to Disease](#)  
[Hypertension](#) [Memory](#) [Spinal Dysraphism](#) [Stroke](#)

---

[服務條款](#) | [隱私權政策](#) | [著作及商標](#) | [網站地圖](#)

©2016 亞諾法生技股份有限公司 Abnova Corporation. 版權所有.