



# SZABO SCANDIC

Part of Europa Biosite

## Produktinformation



Forschungsprodukte & Biochemikalien



Zellkultur & Verbrauchsmaterial



Diagnostik & molekulare Diagnostik



Laborgeräte & Service

Weitere Information auf den folgenden Seiten!  
See the following pages for more information!



### Lieferung & Zahlungsart

siehe unsere [Liefer- und Versandbedingungen](#)

### Zuschläge

- Mindermengenzuschlag
- Trockeneiszuschlag
- Gefahrgutzuschlag
- Expressversand

### SZABO-SCANDIC HandelsgmbH

Quellenstraße 110, A-1100 Wien

T. +43(0)1 489 3961-0

F. +43(0)1 489 3961-7

[mail@szabo-scandic.com](mailto:mail@szabo-scandic.com)

[www.szabo-scandic.com](http://www.szabo-scandic.com)

[linkedin.com/company/szaboscandic](https://www.linkedin.com/company/szaboscandic) 

# MATN2 purified MaxPab mouse polyclonal antibody (B01P) MaxPab®

Catalog # : H00004147-B01P

規格 : [ 50 ug ]

[List All](#)

## Specification

**Product Description:** Mouse polyclonal antibody raised against a full-length human MATN2 protein.

**Immunogen:** MATN2 (NP\_085072.2, 1 a.a. ~ 937 a.a) full-length human protein.

**Sequence:**  
 MEKMLAGCFLLILGQIVLLPAEARERSRGRSISRGRHARTHHPQTALLESS  
 CENKRADLVFIIDSSRSVNTHDYAKVKEFVDILQFLDIGPDVTRVGLLQYG  
 STVKNEFSLKTFKRKSEVERAVKRMRLSTGTMTGLAIQYALNIAFSEAE  
 GARPLRENVPRVIMIVTDGRPQDSVAEVAAKARDTGLIFAIQVGVQVDFNT  
 LKSIGSEPHEDHMFVLFVANSQIETLTSVQKKLCTAHMCSTLEHNCAHFCL  
 NIPGSYVCRCKQGYILNSDQTTCRIQDLCAMEDHNCEQLCVNVPGSFVC  
 QCYSGYALAEADGKRCVAVDYCASENHGCEHECVNADGSYLCQCHEGF  
 ALNPDKKTCTKIDYCASSNHGCQHECVNTDDSYSCHCLKGFNLNPDKKT  
 CRRINICALNKPGEHECVNMEESSYCRCHRGYTLDPNGKTCRSVDHC  
 AQQDHGCEQLCLNTEDSFVCQCSEGFLLINEDLKTCSRVDYCLLSDHGC  
 EYSCVNMDRSFACQCPEGHVLRSDGKCAKLDSCALGDHGCEHSCVSS  
 EDSFVCQCFEGYILREDGKTCRRKDVCAIDHGCEHCVNSDDSYTCEC  
 LEGFRLAEDGKRCRRKDVCKSTHHGCEHCVNNGNSYICKCEGFLVLA  
 DGRRCCKCTEGPIDLVFVIDGSKSLGEENFEVVKQFVTGIIDSLTISPKAA  
 RVGLLQYSTQVHTEFTLRNFNSAKDMKKAHAHMKYMGKGSMTGLALKH  
 MFERSFTQGEGARPLSTRVPRAAIVFDGRAQDDVSEWASKAKANGIT  
 MYAVGVGKAIEEELQEIASEPTNKHLFYAEDFSTMDEISEKLLKKGICEALE  
 DSDGRQDSPAGELPKTVQPTVQHRYLFEEDNLLRSTQKLSHSTKPSG  
 SPLEEKHDQCKCENLIMFQNLANEEVRKLTQRLEEMTQRMEALENRLRY  
 R

**Host:** Mouse

**Reactivity:** Human

**Quality Control Testing:** Antibody reactive against mammalian transfected lysate.

**Storage Buffer:** In 1x PBS, pH 7.4

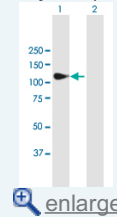
**Storage Instruction:** Store at -20°C or lower. Aliquot to avoid repeated freezing and thawing.

**MSDS:** [Download](#)

**Datasheet:** [Download](#)

## Application Image

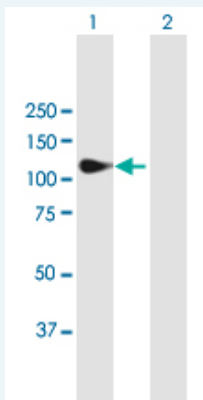
Western Blot (Transfected lysate)



[enlarge](#)

## Applications

Western Blot (Transfected lysate)



Western Blot analysis of MATN2 expression in transfected 293T cell line ([H00004147-T01](#)) by MATN2 MaxPab polyclonal antibody.

Lane1:MATN2 transfected lysate(103.07 KDa).  
Lane2:Non-transfected lysate.

 [Protocol Download](#)

### Gene Information

**Entrez GeneID:** [4147](#)

**GeneBank Accession#:** [NM\\_030583.2](#)

**Protein Accession#:** [NP\\_085072.2](#)

**Gene Name:** MATN2

**Gene Alias:** -

**Gene Description:** [matrilin 2](#)

**Omim ID:** [602108](#)

**Gene Ontology:** [Hyperlink](#)

**Gene Summary:** This gene encodes a member of the von Willebrand factor A domain containing protein family. This family of proteins is thought to be involved in the formation of filamentous networks in the extracellular matrices of various tissues. This protein contains five von Willebrand factor A domains. The specific function of this gene has not yet been determined. Two transcript variants encoding different isoforms have been found for this gene. [provided by RefSeq]

**Other Designations:** -

### Related Disease

[Cardiovascular Diseases](#) [Diabetes Mellitus, Type 2](#) [Edema](#)  
[Genetic Predisposition to Disease](#) [Thyroid Neoplasms](#)