



SZABO SCANDIC

Part of Europa Biosite

Produktinformation



Forschungsprodukte & Biochemikalien



Zellkultur & Verbrauchsmaterial



Diagnostik & molekulare Diagnostik



Laborgeräte & Service

Weitere Information auf den folgenden Seiten!
See the following pages for more information!



Lieferung & Zahlungsart

siehe unsere [Liefer- und Versandbedingungen](#)

Zuschläge

- Mindermengenzuschlag
- Trockeneiszuschlag
- Gefahrgutzuschlag
- Expressversand

SZABO-SCANDIC HandelsgmbH

Quellenstraße 110, A-1100 Wien

T. +43(0)1 489 3961-0

F. +43(0)1 489 3961-7

mail@szabo-scandic.com

www.szabo-scandic.com

[linkedin.com/company/szaboscandic](https://www.linkedin.com/company/szaboscandic) 

MAX monoclonal antibody (M01), clone 4E10-1A9

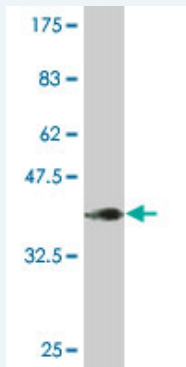
Catalog # : H00004149-M01

規格 : [100 ug]

[List All](#)

Specification

Product Description:	Mouse monoclonal antibody raised against a full length recombinant MAX.
Immunogen:	MAX (AAH03525, 1 a.a. ~ 151 a.a) full-length recombinant protein with GST tag. MW of the GST tag alone is 26 KDa.
Sequence:	MSDNDDIEVESDADKRAHINALERKRRDHIKDSFHSRLRDSVPSLQGEKA SRAQILDKATEYIQYMRRKNHTHQQDIDDLKRNALLEQQVRALEKARSS AQLQTNYPSSDNSLYTNAKGSTISAFDGGSDSSSESEPEEPQSRKLRM EAS
Host:	Mouse
Reactivity:	Human
Isotype:	IgG2a kappa
Quality Control Testing:	Antibody Reactive Against Recombinant Protein.



Western Blot detection against Immunogen (42.35 KDa) .

Storage Buffer: In 1x PBS, pH 7.4

Storage Instruction: Store at -20°C or lower. Aliquot to avoid repeated freezing and thawing.

MSDS: [Download](#)

Datasheet: [Download](#)

Applications

Western Blot (Recombinant protein)

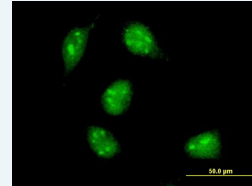
[Protocol Download](#)

Immunofluorescence

Application Image

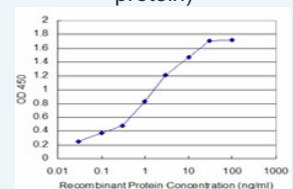
Western Blot (Recombinant protein)

Immunofluorescence



[enlarge](#)

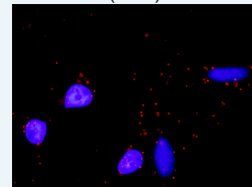
Sandwich ELISA (Recombinant protein)



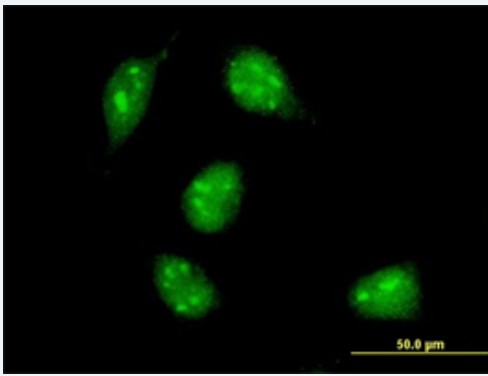
[enlarge](#)

ELISA

In situ Proximity Ligation Assay (Cell)



[enlarge](#)

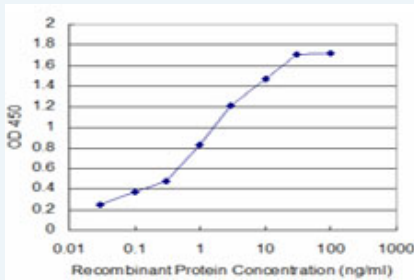


[enlarge this image](#)

Immunofluorescence of monoclonal antibody to MAX on HeLa cell . [antibody concentration 10 ug/ml]

[Protocol Download](#)

Sandwich ELISA (Recombinant protein)

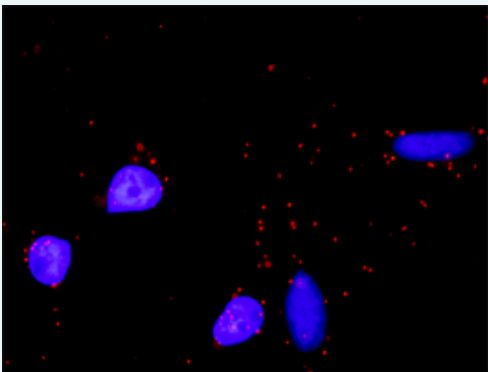


Detection limit for recombinant GST tagged MAX is approximately 0.1ng/ml as a capture antibody.

[Protocol Download](#)

ELISA

In situ Proximity Ligation Assay (Cell)



Proximity Ligation Analysis of protein-protein interactions between MAPK14 and MAX. HeLa cells were stained with anti-MAPK14 rabbit purified polyclonal 1:1200 and anti-MAX mouse monoclonal antibody 1:50. Each red dot represents the detection of protein-protein interaction complex, and nuclei were counterstained with DAPI (blue).

Gene Information

Entrez GeneID: [4149](#)

GeneBank [BC003525](#)

Accession#:

Protein [AAH03525](#)

Accession#:

Gene Name: MAX

Gene Alias: MGC10775,MGC11225,MGC18164,MGC34679,MGC36767,bHLHd4,bHLHd5,bHLHd6,bHLHd7,bHLHd8,orf1

Gene MYC associated factor X

Description:

Omim ID: [154950](#)

Gene Ontology: [Hyperlink](#)

Gene Summary: The protein encoded by this gene is a member of the basic helix-loop-helix leucine zipper (bHLHZ) family of transcription factors. It is able to form homodimers and heterodimers with other family members, which include Mad, Mxi1 and Myc. Myc is an oncoprotein implicated in cell proliferation, differentiation and apoptosis. The homodimers and heterodimers compete for a common DNA target site (the E box) and rearrangement among these dimer forms provides a complex system of transcriptional regulation. Multiple alternatively spliced transcript variants have been described for this gene but the full-length nature for some of them is unknown. [provided by RefSeq]

Other Designations: MAX protein, helix-loop-helix zipper protein, myc-associated factor X

Gene Pathway

[MAPK signaling pathway](#) [Pathways in cancer](#) [Small cell lung cancer](#)

[服務條款](#) | [隱私權政策](#) | [著作及商標](#) | [網站地圖](#)

©2016 亞諾法生技股份有限公司 Abnova Corporation. 版權所有.