



SZABO SCANDIC

Part of Europa Biosite

Produktinformation



Forschungsprodukte & Biochemikalien



Zellkultur & Verbrauchsmaterial



Diagnostik & molekulare Diagnostik



Laborgeräte & Service

Weitere Information auf den folgenden Seiten!
See the following pages for more information!



Lieferung & Zahlungsart

siehe unsere [Liefer- und Versandbedingungen](#)

Zuschläge

- Mindermengenzuschlag
- Trockeneiszuschlag
- Gefahrgutzuschlag
- Expressversand

SZABO-SCANDIC HandelsgmbH

Quellenstraße 110, A-1100 Wien

T. +43(0)1 489 3961-0

F. +43(0)1 489 3961-7

mail@szabo-scandic.com

www.szabo-scandic.com

[linkedin.com/company/szaboscandic](https://www.linkedin.com/company/szaboscandic) 

MBD1 MaxPab mouse polyclonal antibody (B01) MaxPab®

Catalog # : H00004152-B01

規格 : [50 uL]

[List All](#)

Specification

Product Description: Mouse polyclonal antibody raised against a full-length human MBD1 protein.

Immunogen: MBD1 (NP_056671.2, 1 a.a. ~ 605 a.a) full-length human protein.

Sequence:
 MAEDWLDPCALGPGWKRREVFVKSGATCGRSPTYQSPGDRIRSKV
 ELTRYLGPACDLTLDFDKQILCYPAKHPVAVASKKRKKPSRPAKTRK
 RQVGPQSGEVRKEAPRDETKADTDAPASFPAGCCENCISFSGDGT
 QRQLKTLCKDCRAQRIAFNREQRMFKRVGCGECAACQVTEDCGACS
 TLLQLPHDVASGLFCKCERRRCLRMVRSRGCVCVRCGQQTQEDCGH
 CPICLRPPRGLRRQWKCVQRRCLRGKHARRKGGCDKMAARRRPGA
 QPLPPPPPSQSPEPTEPHRALAPSPPAEFIYYCVDEDELQPYTNRRQN
 RKCGACAACLRMDCGRCDFCCDKPKFGGSNQKRQKCRWRQCLQFA
 MKRLLPSVWSEEDGAGSPPYRRRKRPSARRHLLGPTLKPTLATRT
 AQPDPHTQAPTKQEAGGGFVLPPTGDLVFLREGASSPVQVPGPVAAS
 T EALLQEAQCSGLSWVVALPQVKQEKADTQDEWTPGTAVLTSPVLVPGC
 PSKAVDPGLPSVKQEPDPPEEDKEENKDDASAKLAPEEEEAGGAGTPVIT
 EIFSLGGTRFRDRTAVWLPRSKDLKKPGARKQ

Host: Mouse

Reactivity: Human

Quality Control Testing: Antibody reactive against mammalian transfected lysate.

Storage Buffer: No additive

Storage Instruction: Store at -20°C or lower. Aliquot to avoid repeated freezing and thawing.

Note: For IHC and IF applications, antibody purification with Protein A will be needed prior to use.

MSDS:  [Download](#)

Datasheet:  [Download](#)

Publication Reference

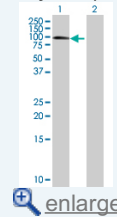
1. [Ccdc13 is a novel human centriolar satellite protein required for ciliogenesis and genome stability.](#)
 Staples CJ, Myers KN, Beveridge RD, Patil AA, Howard AE, Barone G, Lee AJ, Swanton C, Howell M, Maslen S, Skehel JM, Boulton SJ, Collis SJJ Cell Sci. 2014 Jul 1;127(Pt 13):2910-9. doi: 10.1242/jcs.147785. Epub 2014 May 9.
2. [The centriolar satellite protein Cep131 is important for genome stability.](#)
 Staples CJ, Myers KN, Beveridge RD, Patil AA, Lee AJ, Swanton C, Howell M, Boulton SJ, Collis SJJ Cell Sci. 2012 Jul 13.


Applications

Western Blot (Transfected lysate)

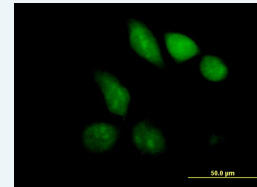
Application Image


Western Blot (Transfected lysate)

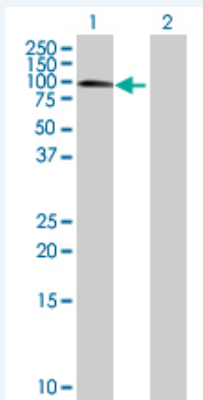


 [enlarge](#)

Immunofluorescence



 [enlarge](#)

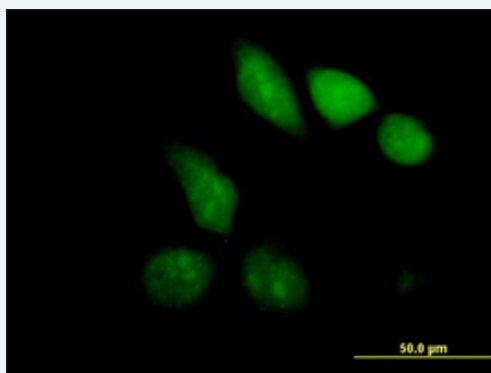


Western Blot analysis of MBD1 expression in transfected 293T cell line ([H00004152-T01](#)) by MBD1 MaxPab polyclonal antibody.

Lane 1: MBD1 transfected lysate(66.55 KDa).
Lane 2: Non-transfected lysate.

[Protocol Download](#)

Immunofluorescence



enlarge this image

Immunofluorescence of [purified](#) MaxPab antibody to MBD1 on HeLa cell. [antibody concentration 10 ug/ml]

[Protocol Download](#)

Gene Information

Entrez GeneID: [4152](#)

GeneBank [NM_015846.2](#)
Accession#:

Protein [NP_056671.2](#)
Accession#:

Gene Name: MBD1

Gene Alias: CXXC3,PCM1,RFT

Gene Description: methyl-CpG binding domain protein 1

Omim ID: [156535](#)

Gene Ontology: [Hyperlink](#)

Gene Summary: DNA methylation is the major modification of eukaryotic genomes and plays an essential role in mammalian development. Human proteins MECP2, MBD1, MBD2, MBD3, and MBD4 comprise a family of nuclear proteins related by the presence in each of a methyl-CpG binding domain (MBD). Each of these proteins, with the exception of MBD3, is capable of binding specifically to methylated DNA. MECP2, MBD1 and MBD2 can also repress transcription from methylated gene promoters. Five transcript variants of the MBD1 are generated by alternative

splicing resulting in protein isoforms that contain one MBD domain, two to three cysteine-rich (CXXC) domains, and some differences in the COOH terminus. All five transcript variants repress transcription from methylated promoters; in addition, variants with three CXXC domains also repress unmethylated promoter activity. MBD1 and MBD2 map very close to each other on chromosome 18q21. [provided by RefSeq

Other OTTHUMP00000163504,OTTHUMP00000163506,OTTHUMP00000163507,
Designations: methyl-CpG binding domain protein 1 isoform PCM1,the regulator of fibroblast growth factor 2 (FGF-2) transcription

Related Disease

[Adenocarcinoma](#) [Carcinoma, Non-Small-Cell Lung](#) [Genetic Predisposition to Disease](#)
[Head and Neck Neoplasms](#) [Lung Neoplasms](#) [Neoplasm Recurrence, Local](#)
[Neoplasms, Second Primary](#)

[服務條款](#) | [隱私權政策](#) | [著作及商標](#) | [網站地圖](#)

©2016 亞諾法生技股份有限公司 Abnova Corporation. 版權所有.