



# SZABO SCANDIC

Part of Europa Biosite

## Produktinformation



Forschungsprodukte & Biochemikalien



Zellkultur & Verbrauchsmaterial



Diagnostik & molekulare Diagnostik



Laborgeräte & Service

Weitere Information auf den folgenden Seiten!  
See the following pages for more information!



### Lieferung & Zahlungsart

siehe unsere [Liefer- und Versandbedingungen](#)

### Zuschläge

- Mindermengenzuschlag
- Trockeneiszuschlag
- Gefahrgutzuschlag
- Expressversand

### SZABO-SCANDIC HandelsgmbH

Quellenstraße 110, A-1100 Wien

T. +43(0)1 489 3961-0

F. +43(0)1 489 3961-7

[mail@szabo-scandic.com](mailto:mail@szabo-scandic.com)

[www.szabo-scandic.com](http://www.szabo-scandic.com)

[linkedin.com/company/szaboscandic](https://www.linkedin.com/company/szaboscandic) 

## MBD1 293T Cell Transient Overexpression Lysate(Denatured)

Catalog # : H00004152-T01

規格 : [ 100 uL ]

List All

### Specification

**Transfected Cell Line:** 293T

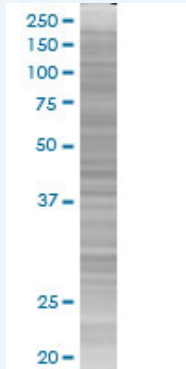
**Plasmid:** pCMV-MBD1 full-length

**Host:** Human

**Theoretical MW (kDa):** 66.66

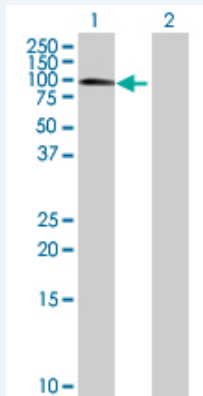
**Quality Control Testing:** Transient overexpression cell lysate was tested with Anti-MBD1 antibody (H00004152-B01) by Western Blots.

#### SDS-PAGE Gel



MBD1 transfected lysate.

#### Western Blot



Lane 1: MBD1 transfected lysate ( 66.66 KDa)

Lane 2: Non-transfected lysate.

**Storage Buffer:** 1X Sample Buffer (50 mM Tris-HCl, 2% SDS, 10% glycerol, 300 mM 2-mercaptoethanol, 0.01% Bromophenol blue)

**Storage Instruction:** Store at -80°C. Aliquot to avoid repeated freezing and thawing.

**MSDS:**  [Download](#)

### Applications

### Application Image

Western Blot

## Western Blot

### Gene Information

Entrez GeneID: [4152](#)

GeneBank Accession#: [NM\\_015846.2](#)

Protein Accession#: =

Gene Name: MBD1

Gene Alias: CXXC3,PCM1,RFT

Gene Description: methyl-CpG binding domain protein 1

Omim ID: [156535](#)

Gene Ontology: [Hyperlink](#)

**Gene Summary:** DNA methylation is the major modification of eukaryotic genomes and plays an essential role in mammalian development. Human proteins MECP2, MBD1, MBD2, MBD3, and MBD4 comprise a family of nuclear proteins related by the presence in each of a methyl-CpG binding domain (MBD). Each of these proteins, with the exception of MBD3, is capable of binding specifically to methylated DNA. MECP2, MBD1 and MBD2 can also repress transcription from methylated gene promoters. Five transcript variants of the MBD1 are generated by alternative splicing resulting in protein isoforms that contain one MBD domain, two to three cysteine-rich (CXXC) domains, and some differences in the COOH terminus. All five transcript variants repress transcription from methylated promoters; in addition, variants with three CXXC domains also repress unmethylated promoter activity. MBD1 and MBD2 map very close to each other on chromosome 18q21. [provided by RefSeq]

Other Designations: OTTHUMP00000163504,OTTHUMP00000163506,OTTHUMP00000163507,methyl-CpG binding domain protein 1 isoform PCM1,the regulator of fibroblast growth factor 2 (FGF-2) transcription

### Related Disease

[Adenocarcinoma](#) [Carcinoma, Non-Small-Cell Lung](#) [Genetic Predisposition to Disease](#) [Head and Neck Neoplasms](#) [Lung Neoplasms](#) [Neoplasm Recurrence, Local](#) [Neoplasms, Second Primary](#)

[服務條款](#) | [隱私權政策](#) | [著作及商標](#) | [網站地圖](#)

©2016 亞諾法生技股份有限公司 Abnova Corporation. 版權所有.