



SZABO SCANDIC

Part of Europa Biosite

Produktinformation



Forschungsprodukte & Biochemikalien



Zellkultur & Verbrauchsmaterial



Diagnostik & molekulare Diagnostik



Laborgeräte & Service

Weitere Information auf den folgenden Seiten!
See the following pages for more information!



Lieferung & Zahlungsart

siehe unsere [Liefer- und Versandbedingungen](#)

Zuschläge

- Mindermengenzuschlag
- Trockeneiszuschlag
- Gefahrgutzuschlag
- Expressversand

SZABO-SCANDIC HandelsgmbH

Quellenstraße 110, A-1100 Wien

T. +43(0)1 489 3961-0

F. +43(0)1 489 3961-7

mail@szabo-scandic.com

www.szabo-scandic.com

[linkedin.com/company/szaboscandic](https://www.linkedin.com/company/szaboscandic) 



MCAM purified MaxPab mouse polyclonal antibody (B01P) MaxPab®

Catalog # : H00004162-B01P

規格 : [50 ug]

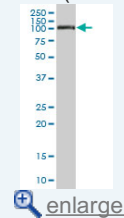
[List All](#)

Specification

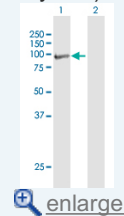
Product Description:	Mouse polyclonal antibody raised against a full-length human MCAM protein.
Immunogen:	MCAM (NP_006491.2, 1 a.a. ~ 646 a.a) full-length human protein.
Sequence:	MGLPRLVCAFLLAACCCCPRVAGVPGAEQPAPELVEVEVGSTALLKC GLSQSQGNLSHVDWFSVHKEKRTLIFRVRQGGQSEPGEYEQRLSLQ DRGATLALTQVTPQDERIFLCQGKRPRSQEYRIQLRVYKAPEEPNIQVNP LGIPVNSKEPEEVATCVGRNGYPIPVWYKNGRPLKEEKNRVHIQSSQT VESSGLYTLQSILKAQLVKEDKDAQFYCELNYRLPSGNHMKESREVTVP VFYPTKEVWLEVEPVGMLKEGDRVEIRCLADGNPPPHFSISKQNPSTRE AEEETTNDNGVLVLEPARKEHSGRYECQGLDLDTMISLLSEPELLVNYV SDVRVSPAAPERQEGSSLTLTCEAESSQDLEFQWLREETGQVLERGPV LQLHDLKREAGGGYRCVASVPSIPGLNRTQLVNVAFGPPWMAFKERKV WVKENMVLNLSCEASGHPRTISWNVNGTASEQDQDPQRLVSTLNLV TPELLETGVECTASNDLGKNTSILFLELVNLTTLPDSNTTGLSTSTASP HTRANSTSTERKLPEPESRGVWVAVIVCILVAVLGAVLYFLYKKGKLP RRSGKQEITLPPSRKSELVVEVKSDDLPEEMGLLQGSSEGDKRAPGDQG EKYIDLRH
Host:	Mouse
Reactivity:	Human
Quality Control Testing:	Antibody reactive against mammalian transfected lysate.
Storage Buffer:	In 1x PBS, pH 7.4
Storage Instruction:	Store at -20°C or lower. Aliquot to avoid repeated freezing and thawing.
MSDS:	 Download
Datasheet:	 Download

Application Image

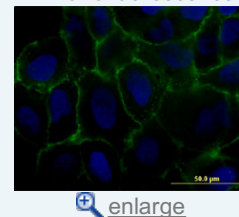
Western Blot (Tissue lysate)



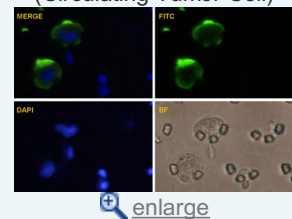
Western Blot (Transfected lysate)



Immunofluorescence

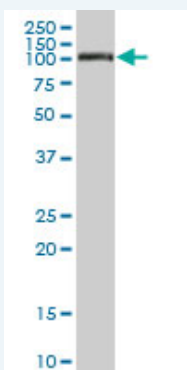


Immunofluorescence (Circulating Tumor Cell)



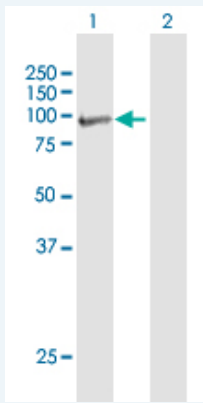
Applications

Western Blot (Tissue lysate)



MCAM MaxPab polyclonal antibody. Western Blot analysis of MCAM expression in human stomach.

Western Blot (Transfected lysate)

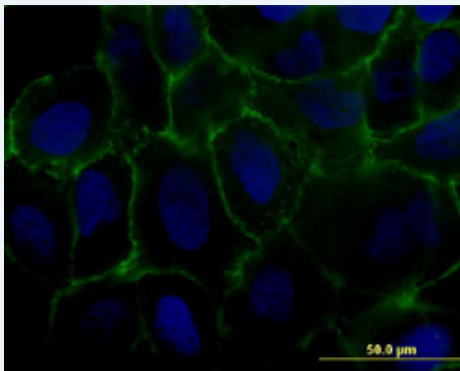


Western Blot analysis of MCAM expression in transfected 293T cell line ([H00004162-T01](#)) by MCAM MaxPab polyclonal antibody.

Lane 1: MCAM transfected lysate(71.06 KDa).

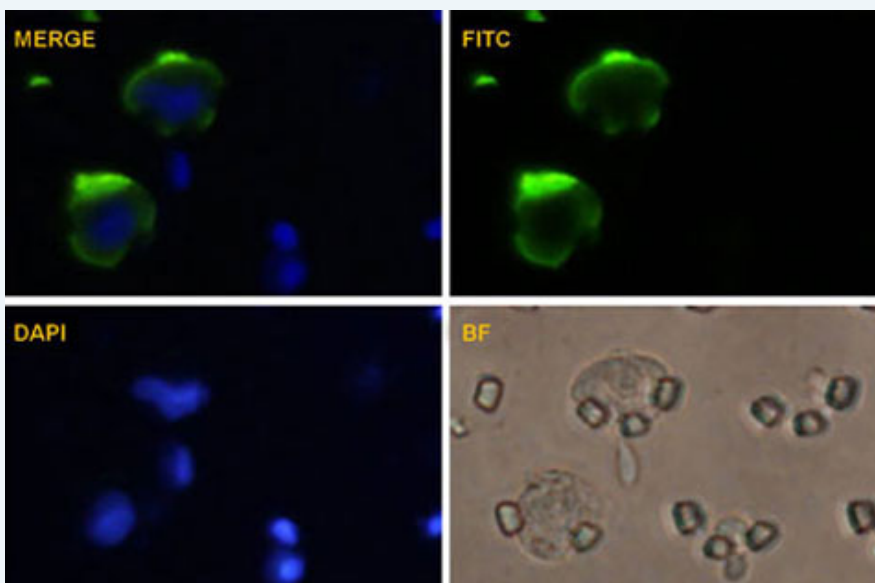
Lane 2: Non-transfected lysate.

Immunofluorescence



Immunofluorescence of monoclonal antibody to MCAM on U-2 OS cell. [antibody concentration 10 ug/ml]

Immunofluorescence (Circulating Tumor Cell)



U-2 OS cells were stained with MCAM-FITC labeled monoclonal antibody (Green). The cell nucleus were counterstained with DAPI (Blue).

Gene Information

Entrez GeneID: [4162](#)

GeneBank Accession#: [NM_006500.2](#)

Protein Accession#: [NP_006491.2](#)

Gene Name: MCAM

Gene Alias: CD146,MUC18

Gene Description: melanoma cell adhesion molecule

Omim ID: [155735](#)

Gene Ontology: [Hyperlink](#)

Other Designations: Gicerin,melanoma adhesion molecule

[服務條款](#) | [隱私權政策](#) | [著作及商標](#) | [網站地圖](#)

©2016 亞諾法生技股份有限公司 Abnova Corporation. 版權所有.