



SZABO SCANDIC

Part of Europa Biosite

Produktinformation



Forschungsprodukte & Biochemikalien



Zellkultur & Verbrauchsmaterial



Diagnostik & molekulare Diagnostik



Laborgeräte & Service

Weitere Information auf den folgenden Seiten!
See the following pages for more information!



Lieferung & Zahlungsart

siehe unsere [Liefer- und Versandbedingungen](#)

Zuschläge

- Mindermengenzuschlag
- Trockeneiszuschlag
- Gefahrgutzuschlag
- Expressversand

SZABO-SCANDIC HandelsgmbH

Quellenstraße 110, A-1100 Wien

T. +43(0)1 489 3961-0

F. +43(0)1 489 3961-7

mail@szabo-scandic.com

www.szabo-scandic.com

[linkedin.com/company/szaboscandic](https://www.linkedin.com/company/szaboscandic) 

MCAM monoclonal antibody (M19), clone 3H6

Catalog # : H00004162-M19

規格 : [100 ug]

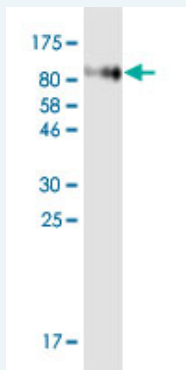
[List All](#)

Specification

Product Description:	Mouse monoclonal antibody raised against a full-length recombinant MCAM.
Immunogen:	MCAM (NP_006491.2, 24 a.a. ~ 646 a.a) full-length recombinant protein with GST tag.
Sequence:	<p>VPGEAEQPAPELVEVEVGSTALLKCGLSQSQGNLSHVDWFSVHKEKRT LIFRVRQGGQSEPGEYEQRLSLQDRGATLALTQVTPQDERIFLCQGK RPRSQEYRIQLRVYKAPEEPNIQVNPLGIPVNSKEPEEVATCVGRNGYPI QVIWYKNGRPLKEEKNRVHIQSSQTVESSGLYTLQSILKAQLVKEDKDAQ FYCELNYRLPSGNHMKESREVTVPVFYPTKVVLEVEPVGMLKEGDRV EIRCLADGNPPPHFSISKQNPSTREAEETNDNGVLVLEPARKEHSGRY ECQGLDLDTMISLLSEPQELLVNYVSDVRVSPAAPERQEGSSLTCEA ESSQDLEFQWLREETGQVLERGPVLQLHDLKREAGGGYRCVASVPSIP GLNRTQLVNVVAIFGPPWMAFKERKVVVKENMVLNLSCEASGHPRPTISW NVNGTASEQDQDPQRVLSTLNLVTPelletGVECTASNDLGKNTSILFL ELVNLTLTPDSNNTTGLSTASPHTANSTSTERKLPEPESRGVVIVA VIVCILVAVLGAVLYFLYKKGKLPARRSGKQEITLPPSRKSELVEVKSD KLPEEMGLLQGSSGDKRAPGDQGEKYIDLRH</p>
Host:	Mouse
Reactivity:	Human
Isotype:	IgG2a Kappa

Quality Control Antibody Reactive Against Recombinant Protein.

Testing:



Western Blot detection against Immunogen (71.61 kDa).

Storage Buffer: In 1x PBS, pH 7.4

Storage Instruction: Store at -20°C or lower. Aliquot to avoid repeated freezing and thawing.

Datasheet:  [Download](#)

Applications

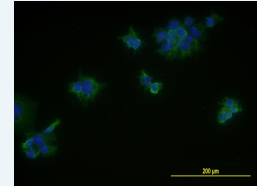
Western Blot (Recombinant protein)


 [Protocol Download](#)

Application Image

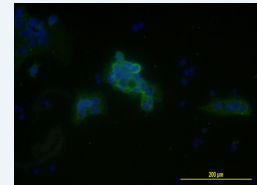
Western Blot (Recombinant protein)


Immunofluorescence



 [enlarge](#)

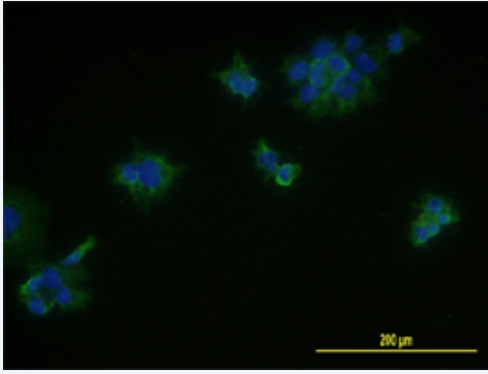
Immunofluorescence



 [enlarge](#)

ELISA

Immunofluorescence

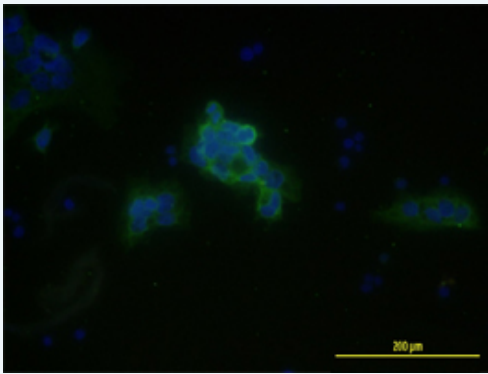


[enlarge this image](#)

Immunofluorescence of monoclonal antibody to MCAM on JAR cell . [antibody concentration 10 ug/ml]

[Protocol Download](#)

Immunofluorescence



[enlarge this image](#)

Immunofluorescence of monoclonal antibody to MCAM on JEG-3 cell . [antibody concentration 10 ug/ml]

[Protocol Download](#)

ELISA

Gene Information

Entrez GeneID: [4162](#)

GeneBank Accession#: [NM_006500.2](#)

Protein Accession#: [NP_006491.2](#)

Gene Name: MCAM

Gene Alias: CD146,MUC18

Gene Description: melanoma cell adhesion molecule

Omim ID: [155735](#)

Gene Ontology: [Hyperlink](#)

Other Designations: Gicerin,melanoma adhesion molecule

