



SZABO SCANDIC

Part of Europa Biosite

Produktinformation



Forschungsprodukte & Biochemikalien



Zellkultur & Verbrauchsmaterial



Diagnostik & molekulare Diagnostik



Laborgeräte & Service

Weitere Information auf den folgenden Seiten!
See the following pages for more information!



Lieferung & Zahlungsart

siehe unsere [Liefer- und Versandbedingungen](#)

Zuschläge

- Mindermengenzuschlag
- Trockeneiszuschlag
- Gefahrgutzuschlag
- Expressversand

SZABO-SCANDIC HandelsgmbH

Quellenstraße 110, A-1100 Wien

T. +43(0)1 489 3961-0

F. +43(0)1 489 3961-7

mail@szabo-scandic.com

www.szabo-scandic.com

[linkedin.com/company/szaboscandic](https://www.linkedin.com/company/szaboscandic) 

MCC polyclonal antibody (A01)

Catalog # : H00004163-A01

規格 : [50 uL]

List All

Specification

Product Description: Mouse polyclonal antibody raised against a partial recombinant MCC.

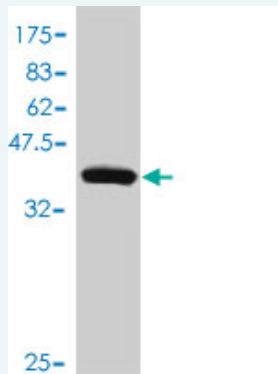
Immunogen: MCC (AAH09279, 31 a.a. ~ 130 a.a) partial recombinant protein with GST tag.

Sequence: DIVELNKRLLQQTERERDLLEKKLAKAQCEQSHLMREHEDVQERTTLRYE
ERITELHSVIAELNKKIDRLQGTTIREEDEYSELRSLSQSQHEVNEDSRS

Host: Mouse

Reactivity: Human

Quality Control Testing: Antibody Reactive Against Recombinant Protein.



Western Blot detection against Immunogen (37 KDa) .

Storage Buffer: 50 % glycerol

Storage Instruction: Store at -20°C or lower. Aliquot to avoid repeated freezing and thawing.

MSDS: [Download](#)

Datasheet: [Download](#)

Applications

Western Blot (Recombinant protein)

[Protocol Download](#)

ELISA

Gene Information

Entrez GeneID: [4163](#)

GeneBank Accession#: [BC009279](#)

Application Image

Western Blot (Recombinant protein)

ELISA

Protein [AAH09279](#)

Accession#:

Gene Name: MCC

Gene Alias: DKFZp762O1615,FLJ38893,FLJ46755,MCC1

Gene Description: mutated in colorectal cancers

Omim ID: [159350](#)

Gene Ontology: [Hyperlink](#)

Gene Summary: This gene is a candidate colorectal tumor suppressor gene that is thought to negatively regulate cell cycle progression. The orthologous gene in the mouse expresses a phosphoprotein associated with the plasma membrane and membrane organelles, and overexpression of the mouse protein inhibits entry into S phase. Multiple transcript variants encoding different isoforms have been found for this gene. [provided by RefSeq]

Other Designations: -

Related Disease

[Cerebral Hemorrhage](#) [Dermatitis, Atopic](#) [Genetic Predisposition to Disease](#) [Hypertension](#)
[Intracranial Hemorrhages](#) [Stroke](#) [Subarachnoid Hemorrhage](#) [Tobacco Use Disorder](#)

[服務條款](#) | [隱私權政策](#) | [著作及商標](#) | [網站地圖](#)

©2016 亞諾法生技股份有限公司 Abnova Corporation. 版權所有.