



SZABO SCANDIC

Part of Europa Biosite

Produktinformation



Forschungsprodukte & Biochemikalien



Zellkultur & Verbrauchsmaterial



Diagnostik & molekulare Diagnostik



Laborgeräte & Service

Weitere Information auf den folgenden Seiten!
See the following pages for more information!



Lieferung & Zahlungsart

siehe unsere [Liefer- und Versandbedingungen](#)

Zuschläge

- Mindermengenzuschlag
- Trockeneiszuschlag
- Gefahrgutzuschlag
- Expressversand

SZABO-SCANDIC HandelsgmbH

Quellenstraße 110, A-1100 Wien

T. +43(0)1 489 3961-0

F. +43(0)1 489 3961-7

mail@szabo-scandic.com

www.szabo-scandic.com

[linkedin.com/company/szaboscandic](https://www.linkedin.com/company/szaboscandic) 

MCC MaxPab mouse polyclonal antibody (B01) MaxPab®

Catalog # : H00004163-B01

規格 : [50 uL]

[List All](#)

Specification

Product Description: Mouse polyclonal antibody raised against a full-length human MCC protein.

Immunogen: MCC (NP_002378, 1 a.a. ~ 829 a.a) full-length human protein.

Sequence:
 MNSGVAMKYGNDSSAELSELHSAALASLKGDIVELNKRLQQTERERDLL
 EKKLAKAQCEQSHLMREHEDVQERTTLRYEERITELHSVIAELNKKIDRLQ
 GTTIREEDEYSELRSELSQSQHEVNEDSRSMDDQDTSVSIPENQSTMVT
 ADMDNCSDLNSELQRVLTGLENVVCGRKKSSCSLSVAEVDRIEQLTTA
 SEHCDLAIKTVEEIEGVLGRDLYPNLAEERSRWEKELAGLREENESLTAM
 LCSKEEELNRTKATMNAIREERDRLRRRVRELQTRLQSVQATGPSSPGR
 LTSTNRPINPSTGELSTSSSSNDIPIAKIAERVKLSKTRSESSSSDRPVLGS
 EISSIGVSSSVAEHLAHSLLQDCSNIQEIFQTLYSHGSAISESKIREFEVETER
 LNSRIEHLKSQNDLLTITLLEECKSNAERMSMLVGKYESNATALRLALQYSE
 QCIEAYELLLALAESEQSLILGQFRAAGVGSPPGDQSGDENITQMLKRAH
 DCRKTAENAAKALLMKLDGSCGGAFVAVAGCSVQPWESLSSNSHTSTTS
 STASSCDTEFTKEDEQRLKDYIQQKNDRAAVKLTMLELESIHIDPLSYDV
 KPRGDSQRDLLENAVLMQELMAMKEEMAELKAQLYLLEKEKKALELKLS
 TREAQEQAYLVHIEHLKSEVEEQEQRMRSLSSTSSGSKDKPGKECADA
 ASPALSLAELRTTCSENELAAEFTNAIRREKCLKARVQELVSALERLTKSS
 EIRHQQAFAEVDLKRANSNLVAAYEKAKKKHQNKLKLESQMMAMVER
 HETQVRMLKQRIALLEEENS RPHTNETSL

Host: Mouse

Reactivity: Human

Quality Control Testing: Antibody reactive against mammalian transfected lysate.

Storage Buffer: No additive

Storage Instruction: Store at -20°C or lower. Aliquot to avoid repeated freezing and thawing.

Note: For IHC and IF applications, antibody purification with Protein A will be needed prior to use.

MSDS:  [Download](#)

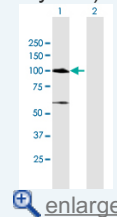
Datasheet:  [Download](#)

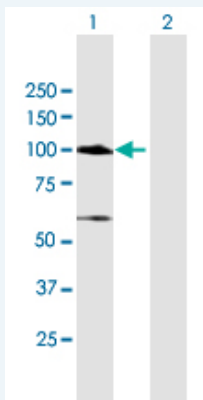
Applications

Western Blot (Transfected lysate)

Application Image

Western Blot (Transfected lysate)





Western Blot analysis of MCC expression in transfected 293T cell line (H00004163-T01) by MCC MaxPab polyclonal antibody.

Lane1:MCC transfected lysate(91.19 KDa).

Lane2:Non-transfected lysate.

 [Protocol Download](#)

Gene Information

Entrez GeneID: [4163](#)

GeneBank [NM_002387](#)

Accession#:

Protein [NP_002378](#)

Accession#:

Gene Name: MCC

Gene Alias: DKFZp762O1615,FLJ38893,FLJ46755,MCC1

Gene mutated in colorectal cancers

Description:

Omim ID: [159350](#)

Gene Ontology: [Hyperlink](#)

Gene Summary: This gene is a candidate colorectal tumor suppressor gene that is thought to negatively regulate cell cycle progression. The orthologous gene in the mouse expresses a phosphoprotein associated with the plasma membrane and membrane organelles, and overexpression of the mouse protein inhibits entry into S phase. Multiple transcript variants encoding different isoforms have been found for this gene. [provided by RefSeq]

Other -

Designations:

Related Disease

[Cerebral Hemorrhage](#) [Dermatitis](#) [Atopic Genetic Predisposition to Disease](#) [Hypertension](#) [Intracranial Hemorrhages](#) [Stroke](#) [Subarachnoid Hemorrhage](#) [Tobacco Use Disorder](#)