



# SZABO SCANDIC

Part of Europa Biosite

## Produktinformation



Forschungsprodukte & Biochemikalien



Zellkultur & Verbrauchsmaterial



Diagnostik & molekulare Diagnostik



Laborgeräte & Service

Weitere Information auf den folgenden Seiten!  
See the following pages for more information!



### Lieferung & Zahlungsart

siehe unsere [Liefer- und Versandbedingungen](#)

### Zuschläge

- Mindermengenzuschlag
- Trockeneiszuschlag
- Gefahrgutzuschlag
- Expressversand

### SZABO-SCANDIC HandelsgmbH

Quellenstraße 110, A-1100 Wien

T. +43(0)1 489 3961-0

F. +43(0)1 489 3961-7

[mail@szabo-scandic.com](mailto:mail@szabo-scandic.com)

[www.szabo-scandic.com](http://www.szabo-scandic.com)

[linkedin.com/company/szaboscandic](https://www.linkedin.com/company/szaboscandic)

## MCC monoclonal antibody (M01), clone 1A7

Catalog # : H00004163-M01

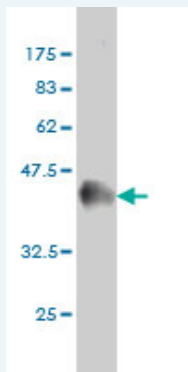
規格 : [ 100 ug ]

List All

### Specification

<b>Product Description:</b>	Mouse monoclonal antibody raised against a partial recombinant MCC.
<b>Immunogen:</b>	MCC (AAH09279, 31 a.a. ~ 130 a.a) partial recombinant protein with GST tag. MW of the GST tag alone is 26 KDa.
<b>Sequence:</b>	DIVELNKRLQQTERERDLLEKKLAKAQCEQSHLMREHEDVQERTTLRYE ERITELHSVIAELNKKIDRLQGTTIREEDEYSELRSLSQSQHEVNEDSRS
<b>Host:</b>	Mouse
<b>Reactivity:</b>	Human
<b>Isotype:</b>	IgG1 Kappa

**Quality Control Testing:** Antibody Reactive Against Recombinant Protein.



Western Blot detection against Immunogen (36.63 KDa) .

**Storage Buffer:** In 1x PBS, pH 7.4

**Storage Instruction:** Store at -20°C or lower. Aliquot to avoid repeated freezing and thawing.

**MSDS:** [Download](#)

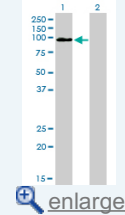
**Datasheet:** [Download](#)

### Applications

Western Blot (Transfected lysate)

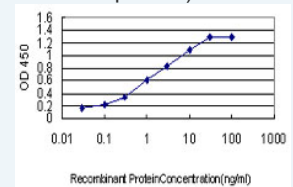
### Application Image

Western Blot (Transfected lysate)



Western Blot (Recombinant protein)

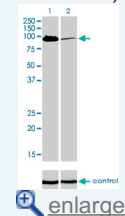
Sandwich ELISA (Recombinant protein)



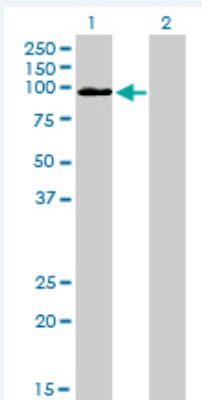
[enlarge](#)

ELISA

RNAi Knockdown (Antibody validated)



[enlarge](#)



Western Blot analysis of MCC expression in transfected 293T cell line by MCC monoclonal antibody (M01), clone 1A7.

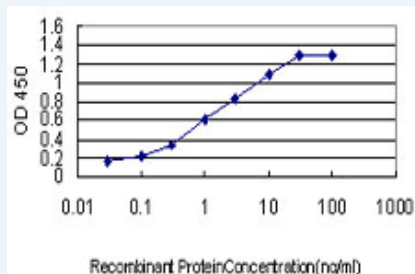
Lane 1: MCC transfected lysate(93.1 KDa).  
Lane 2: Non-transfected lysate.

[Protocol Download](#)

### Western Blot (Recombinant protein)

[Protocol Download](#)

### Sandwich ELISA (Recombinant protein)

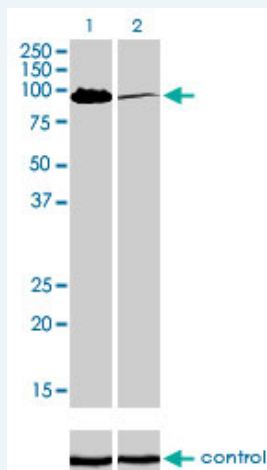


Detection limit for recombinant GST tagged MCC is approximately 0.03ng/ml as a capture antibody.

[Protocol Download](#)

### ELISA

#### RNAi Knockdown (Antibody validated)



Western blot analysis of MCC over-expressed 293 cell line, cotransfected with MCC Validated Chimera RNAi ( Cat # H00004163-R01V ) (Lane 2) or non-transfected control (Lane 1). Blot probed with MCC monoclonal antibody (M01), clone 1A7 (Cat # H00004163-M01 ). GAPDH ( 36.1 kDa ) used as specificity and loading control.

[Protocol Download](#)

### Gene Information

Entrez GeneID: [4163](#)

**GeneBank  
Accession#:** [BC009279](#)

**Protein  
Accession#:** [AAH09279](#)

**Gene Name:** MCC

**Gene Alias:** DKFZp762O1615,FLJ38893,FLJ46755,MCC1

**Gene  
Description:** mutated in colorectal cancers

**Omim ID:** [159350](#)

**Gene Ontology:** [Hyperlink](#)

**Gene Summary:** This gene is a candidate colorectal tumor suppressor gene that is thought to negatively regulate cell cycle progression. The orthologous gene in the mouse expresses a phosphoprotein associated with the plasma membrane and membrane organelles, and overexpression of the mouse protein inhibits entry into S phase. Multiple transcript variants encoding different isoforms have been found for this gene. [provided by RefSeq]

**Other  
Designations:** -

#### **Related Disease**

[Cerebral Hemorrhage](#) [Dermatitis](#) [Atopic Genetic Predisposition to Disease](#) [Hypertension](#)  
[Intracranial Hemorrhages](#) [Stroke](#) [Subarachnoid Hemorrhage](#) [Tobacco Use Disorder](#)

[服務條款](#) | [隱私權政策](#) | [著作及商標](#) | [網站地圖](#)

©2016 亞諾法生技股份有限公司 Abnova Corporation. 版權所有.