



# SZABO SCANDIC

Part of Europa Biosite

## Produktinformation



Forschungsprodukte & Biochemikalien



Zellkultur & Verbrauchsmaterial



Diagnostik & molekulare Diagnostik



Laborgeräte & Service

Weitere Information auf den folgenden Seiten!  
See the following pages for more information!



### Lieferung & Zahlungsart

siehe unsere [Liefer- und Versandbedingungen](#)

### Zuschläge

- Mindermengenzuschlag
- Trockeneiszuschlag
- Gefahrgutzuschlag
- Expressversand

### SZABO-SCANDIC HandelsgmbH

Quellenstraße 110, A-1100 Wien

T. +43(0)1 489 3961-0

F. +43(0)1 489 3961-7

[mail@szabo-scandic.com](mailto:mail@szabo-scandic.com)

[www.szabo-scandic.com](http://www.szabo-scandic.com)

[linkedin.com/company/szaboscandic](https://www.linkedin.com/company/szaboscandic) 

## MCL1 polyclonal antibody (A02)

Catalog # : H00004170-A02

規格 : [ 50 uL ]

List All

### Specification

**Product Description:** Mouse polyclonal antibody raised against a partial recombinant MCL1.

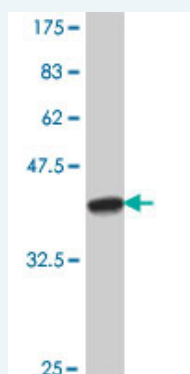
**Immunogen:** MCL1 (NP\_068779, 151 a.a. ~ 250 a.a) partial recombinant protein with GST tag.

**Sequence:** GNNTSTDGSLPSTPPPAEEEEDEL YRQSLEIISRYLREQATGAKDTKPM  
GRSGATSRKALET LRRVGDGVQRNHETAFQGMLRKLDIKNEDDVKSLS  
RVM

**Host:** Mouse

**Reactivity:** Human

**Quality Control Testing:** Antibody Reactive Against Recombinant Protein.



Western Blot detection against Immunogen (37.11 kDa) .

**Storage Buffer:** 50 % glycerol

**Storage Instruction:** Store at -20°C or lower. Aliquot to avoid repeated freezing and thawing.

**MSDS:** [Download](#)

**Datasheet:** [Download](#)

### Applications

**Western Blot (Recombinant protein)**

[Protocol Download](#)

**ELISA**

### Gene Information

**Entrez GeneID:** [4170](#)

**GeneBank Accession#:** [NM\\_021960](#)

### Application Image

Western Blot (Recombinant protein)

ELISA

**Protein** [NP\\_068779](#)

**Accession#:**

**Gene Name:** MCL1

**Gene Alias:** BCL2L3,EAT,MCL1L,MCL1S,MGC104264,MGC1839,TM

**Gene Description:** myeloid cell leukemia sequence 1 (BCL2-related)

**Omim ID:** [159552](#)

**Gene Ontology:** [Hyperlink](#)

**Gene Summary:** The protein encoded by this gene belongs to the Bcl-2 family. Alternative splicing occurs at this locus and two transcript variants encoding distinct isoforms have been identified. The longer gene product (isoform 1) enhances cell survival by inhibiting apoptosis while the alternatively spliced shorter gene product (isoform 2) promotes apoptosis and is death-inducing. [provided by RefSeq]

**Other Designations:** OTTHUMP00000032794,OTTHUMP00000032795,induced myeloid leukemia cell differentiation protein Mcl-1,myeloid cell leukemia sequence 1,myeloid cell leukemia sequence 1, isoform 1

#### **Related Disease**

[Bile Duct Neoplasms](#) [Cardiovascular Diseases](#) [Cholangiocarcinoma](#)  
[Diabetes Mellitus, Type 2](#) [Edema](#) [Genetic Predisposition to Disease](#) [Narcolepsy](#)  
[Tuberculosis, Pulmonary](#)

[服務條款](#) | [隱私權政策](#) | [著作及商標](#) | [網站地圖](#)

©2016 亞諾法生技股份有限公司 Abnova Corporation. 版權所有.