



SZABO SCANDIC

Part of Europa Biosite

Produktinformation



Forschungsprodukte & Biochemikalien



Zellkultur & Verbrauchsmaterial



Diagnostik & molekulare Diagnostik



Laborgeräte & Service

Weitere Information auf den folgenden Seiten!
See the following pages for more information!



Lieferung & Zahlungsart

siehe unsere [Liefer- und Versandbedingungen](#)

Zuschläge

- Mindermengenzuschlag
- Trockeneiszuschlag
- Gefahrgutzuschlag
- Expressversand

SZABO-SCANDIC HandelsgmbH

Quellenstraße 110, A-1100 Wien

T. +43(0)1 489 3961-0

F. +43(0)1 489 3961-7

mail@szabo-scandic.com

www.szabo-scandic.com

[linkedin.com/company/szaboscandic](https://www.linkedin.com/company/szaboscandic) 

MCM2 polyclonal antibody (A01)

Catalog # : H00004171-A01

規格 : [50 uL]

List All

Specification

Product Description: Mouse polyclonal antibody raised against a partial recombinant MCM2.

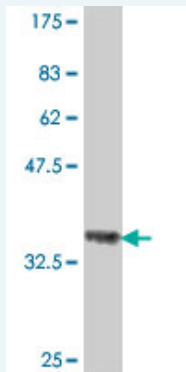
Immunogen: MCM2 (AAH07670, 805 a.a. ~ 904 a.a) partial recombinant protein with GST tag.

Sequence: TQKFSVMRSMRKT FARYLSFRRDNNELLFLKQLVAEQVTYQRNRF GA QQDTIEVPEKDLVDKARQINIHNLSAFYDSELF RMNKF SHDLKRKMLQQF

Host: Mouse

Reactivity: Human

Quality Control Testing: Antibody Reactive Against Recombinant Protein.



Western Blot detection against Immunogen (37 KDa) .

Storage Buffer: 50 % glycerol

Storage Instruction: Store at -20°C or lower. Aliquot to avoid repeated freezing and thawing.

MSDS: [Download](#)

Datasheet: [Download](#)

Applications

Western Blot (Recombinant protein)

[Protocol Download](#)

ELISA

Gene Information

Entrez GeneID: [4171](#)

GeneBank Accession#: [BC007670](#)

Application Image

Western Blot (Recombinant protein)

ELISA

Protein [AAH07670](#)

Accession#:

Gene Name: MCM2

Gene Alias: BM28,CCNL1,CDCL1,D3S3194,KIAA0030,MGC10606,MITOTIN,cdc19

Gene Description: minichromosome maintenance complex component 2

Omim ID: [116945](#)

Gene Ontology: [Hyperlink](#)

Gene Summary: The protein encoded by this gene is one of the highly conserved minichromosome maintenance proteins (MCM) that are involved in the initiation of eukaryotic genome replication. The hexameric protein complex formed by MCM proteins is a key component of the pre-replication complex (pre_RC) and may be involved in the formation of replication forks and in the recruitment of other DNA replication related proteins. This protein forms a complex with MCM4, 6, and 7, and has been shown to regulate the helicase activity of the complex. This protein is phosphorylated, and thus regulated by, protein kinases CDC2 and CDC7. [provided by RefSeq]

Other Designations: DNA replication licensing factor MCM2,MCM2 minichromosome maintenance deficient 2, mitotin,cell division cycle-like 1,cyclin-like 1,minichromosome maintenance deficient 2 (mitotin),nuclear protein BM28

Gene Pathway

[Cell cycle DNA replication](#)

Related Disease

[Genetic Predisposition to Disease Ovarian Neoplasms](#)

[服務條款](#) | [隱私權政策](#) | [著作及商標](#) | [網站地圖](#)

©2016 亞諾法生技股份有限公司 Abnova Corporation. 版權所有.