



# SZABO SCANDIC

Part of Europa Biosite

## Produktinformation



Forschungsprodukte & Biochemikalien



Zellkultur & Verbrauchsmaterial



Diagnostik & molekulare Diagnostik



Laborgeräte & Service

Weitere Information auf den folgenden Seiten!  
See the following pages for more information!



### Lieferung & Zahlungsart

siehe unsere [Liefer- und Versandbedingungen](#)

### Zuschläge

- Mindermengenzuschlag
- Trockeneiszuschlag
- Gefahrgutzuschlag
- Expressversand

### SZABO-SCANDIC HandelsgmbH

Quellenstraße 110, A-1100 Wien

T. +43(0)1 489 3961-0

F. +43(0)1 489 3961-7

[mail@szabo-scandic.com](mailto:mail@szabo-scandic.com)

[www.szabo-scandic.com](http://www.szabo-scandic.com)

[linkedin.com/company/szaboscandic](https://www.linkedin.com/company/szaboscandic) 

## MCM2 purified MaxPab rabbit polyclonal antibody (D01P) MaxPab®

Catalog # : H00004171-D01P

規格 : [ 100 ug ]

[List All](#)

### Specification

**Product Description:** Rabbit polyclonal antibody raised against a full-length human MCM2 protein.

**Immunogen:** MCM2 (NP\_004517.2, 1 a.a. ~ 904 a.a) full-length human protein.

**Sequence:**  
 MAESSESFTMASSPAQRRRGNDPLTSSPGRSSRRTDAL TSSPGRDLPP  
 FEDESEGLLGTEGPLLEEEEDGEELIGDGMERDYRAIPELDAYEAEGLAL  
 DDEDVEELTASQREAAERAMRQRDREAGRGLGRMRRLLYDSDEEDE  
 ERPARKRRQVERATEDGEEDEEMIESIENLEDLKGHSVREWWSMAGPRL  
 EIHHRFKNFLRTHVDSHGHNVFKERISDMCKENRESLVVNYEDLAAREHV  
 LAYFLPEAPAEQLQIFDEAALEVVLAMYPKYDRITNHHVRIHPLVEELRS  
 LRQLHLNQLIRTSGVVT SCTGVL PQLSMVKYCNKCNFV L GPF CQS QNQ  
 EVKPGSCPECQSAGPFEVNMEETIYQNYQRIRIQESPGKVAAGRLPRSK  
 DAILLADLVDSCKPGDEIELTGIYHNNDGSLNTANGFPVFATVILANHVAK  
 KDNKVAVGELTDEDVKMITSLSKDQQIGEKIFASIAPSIYGHEDIKRLALA  
 LFGGEPKNPGGKHKVVRGDI MVL LCGDPGTAKSQFLKYIEKVSSRAIFTTG  
 QGASAVGLTAYVQRHPVSREWTL EAGALVLADRGVCLIDEFDKMNDQD  
 RTSIHEAMEQQSISISKAGIVTSLQARCTVIAAANPIGGRYDPSLTFSENVD  
 LTEPIISRFDILCVVRDTVDPVQDEMLARFVVGSHVRHHPSNKEEEGLAN  
 GSAAEPAMPNTYGVEPLPQEV LK KYIYAKERVHPKLNQMDQDKVAKMYS  
 DLRKESMATGSIPITVRHIESMIRMAEAHARIHLRDYVIEDDVNMAIRVMLES  
 FIDTQKFSVMRSMRKTFFARYLSFRRDNNELLLFILKQLVAEQVTYQRNRF  
 GAQQDTIEVPEKDLVDKARQINIHNLSAFYDSELFMRNKFSHDLK R K MILQ  
 QF

**Host:** Rabbit

**Reactivity:** Human

**Quality Control Testing:** Antibody reactive against mammalian transfected lysate.

**Storage Buffer:** In 1x PBS, pH 7.4

**Storage Instruction:** Store at -20°C or lower. Aliquot to avoid repeated freezing and thawing.

**MSDS:**  [Download](#)

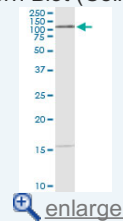
**Datasheet:**  [Download](#)

### Applications

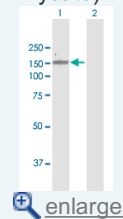
**Western Blot (Cell lysate)**

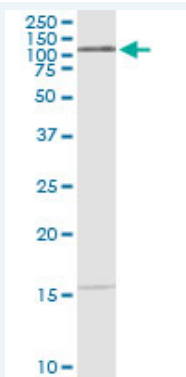
### Application Image

Western Blot (Cell lysate)



Western Blot (Transfected lysate)

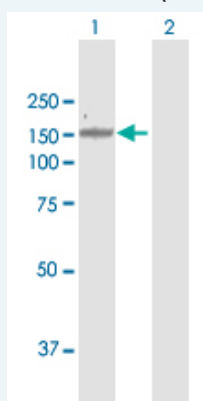




MCM2 MaxPab rabbit polyclonal antibody. Western Blot analysis of MCM2 expression in HepG2.

 [Protocol Download](#)

#### Western Blot (Transfected lysate)



Western Blot analysis of MCM2 expression in transfected 293T cell line ([H00004171-T01](#)) by MCM2 MaxPab polyclonal antibody.

Lane 1: MCM2 transfected lysate(101.90 KDa).

Lane 2: Non-transfected lysate.

 [Protocol Download](#)

#### Gene Information

Entrez GeneID: [4171](#)

GeneBank [NM\\_004526](#)

Accession#:

Protein [NP\\_004517.2](#)

Accession#:

Gene Name: MCM2

Gene Alias: BM28,CCNL1,CDCL1,D3S3194,KIAA0030,MGC10606,MITOTIN,cdc19

Gene Description: minichromosome maintenance complex component 2

Description:

Omim ID: [116945](#)

Gene Ontology: [Hyperlink](#)

**Gene Summary:** The protein encoded by this gene is one of the highly conserved minichromosome maintenance proteins (MCM) that are involved in the initiation of eukaryotic genome replication. The hexameric protein complex formed by MCM proteins is a key component of the pre-replication complex (pre\_RC) and may be involved in the formation of replication forks and in the recruitment of other DNA replication related proteins. This protein forms a complex with MCM4, 6, and 7, and has been shown to regulate the helicase activity of the complex. This protein

is phosphorylated, and thus regulated by, protein kinases CDC2 and CDC7. [provided by RefSeq]

---

**Other Designations:** DNA replication licensing factor MCM2, MCM2 minichromosome maintenance deficient 2, mitotin, cell division cycle-like 1, cyclin-like 1, minichromosome maintenance deficient 2 (mitotin), nuclear protein BM28

---

#### **Gene Pathway**

---

[Cell cycle DNA replication](#)

#### **Related Disease**

---

[Genetic Predisposition to Disease Ovarian Neoplasms](#)

---

[服務條款](#) | [隱私權政策](#) | [著作及商標](#) | [網站地圖](#)

©2016 亞諾法生技股份有限公司 Abnova Corporation. 版權所有.