



# SZABO SCANDIC

Part of Europa Biosite

## Produktinformation



Forschungsprodukte & Biochemikalien



Zellkultur & Verbrauchsmaterial



Diagnostik & molekulare Diagnostik



Laborgeräte & Service

Weitere Information auf den folgenden Seiten!  
See the following pages for more information!



### Lieferung & Zahlungsart

siehe unsere [Liefer- und Versandbedingungen](#)

### Zuschläge

- Mindermengenzuschlag
- Trockeneiszuschlag
- Gefahrgutzuschlag
- Expressversand

### SZABO-SCANDIC HandelsgmbH

Quellenstraße 110, A-1100 Wien

T. +43(0)1 489 3961-0

F. +43(0)1 489 3961-7

[mail@szabo-scandic.com](mailto:mail@szabo-scandic.com)

[www.szabo-scandic.com](http://www.szabo-scandic.com)

[linkedin.com/company/szaboscandic](https://www.linkedin.com/company/szaboscandic) 

## MCM3 monoclonal antibody (M06), clone 3E11

Catalog # : H00004172-M06

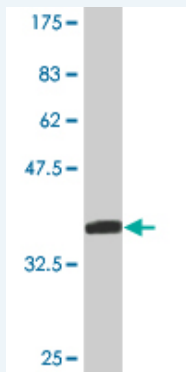
規格 : [ 100 ug ]

[List All](#)

### Specification

<b>Product Description:</b>	Mouse monoclonal antibody raised against a full-length recombinant MCM3.
<b>Immunogen:</b>	MCM3 (NP_002379, 26 a.a. ~ 113 a.a) full-length recombinant protein with GST tag. MW of the GST tag alone is 26 KDa.
<b>Sequence:</b>	EEDQGIYQSKVRELISDNQYRLIVNVDLRRKNEKRANRLLNNAFEELVAFQRALKDFVASIDATYAKQYEEFYVGLGSEFGSKHVS
<b>Host:</b>	Mouse
<b>Reactivity:</b>	Human
<b>Isotype:</b>	IgG2a Kappa

**Quality Control Testing:** Antibody Reactive Against Recombinant Protein.



Western Blot detection against Immunogen (35.42 KDa) .

**Storage Buffer:** In 1x PBS, pH 7.4

**Storage Instruction:** Store at -20°C or lower. Aliquot to avoid repeated freezing and thawing.

**MSDS:** [Download](#)

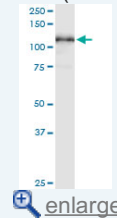
**Datasheet:** [Download](#)

### Applications

Western Blot (Tissue lysate)

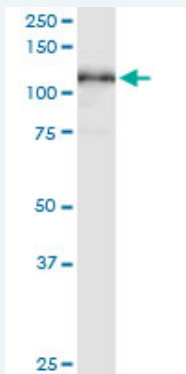
### Application Image

Western Blot (Tissue lysate)




Western Blot (Recombinant protein)

ELISA



MCM3 monoclonal antibody (M06), clone 3E11. Western Blot analysis of MCM3 expression in human spleen.

 [Protocol Download](#)

#### Western Blot (Recombinant protein)

 [Protocol Download](#)

#### ELISA

#### Gene Information

**Entrez GeneID:** [4172](#)

**GeneBank Accession#:** [NM\\_002388](#)

**Protein Accession#:** [NP\\_002379](#)

**Gene Name:** MCM3

**Gene Alias:** HCC5,MGC1157,P1-MCM3,P1.h,RLFB

**Gene Description:** minichromosome maintenance complex component 3

**Omim ID:** [602693](#)

**Gene Ontology:** [Hyperlink](#)

**Gene Summary:** The protein encoded by this gene is one of the highly conserved minichromosome maintenance proteins (MCM) that are involved in the initiation of eukaryotic genome replication. The hexameric protein complex formed by MCM proteins is a key component of the pre-replication complex (pre\_RC) and may be involved in the formation of replication forks and in the recruitment of other DNA replication related proteins. This protein is a subunit of the protein complex that consists of MCM2-7. It has been shown to interact directly with MCM5/CDC46. This protein also interacts with, and thus is acetylated by MCM3AP, a chromatin-associated acetyltransferase. The acetylation of this protein inhibits the initiation of DNA replication and cell cycle progression. [provided by RefSeq]

**Other Designations:** DNA polymerase alpha holoenzyme-associated protein P1,DNA replication factor MCM3,MCM3 minichromosome maintenance deficient 3,OTTHUMP00000016600,cervical cancer proto-oncogene 5,hRlf beta subunit,minichromosome maintenance deficient 3,replication licensin

#### Gene Pathway

[Cell cycle](#) [DNA replication](#)

