



SZABO SCANDIC

Part of Europa Biosite

Produktinformation



Forschungsprodukte & Biochemikalien



Zellkultur & Verbrauchsmaterial



Diagnostik & molekulare Diagnostik



Laborgeräte & Service

Weitere Information auf den folgenden Seiten!
See the following pages for more information!



Lieferung & Zahlungsart

siehe unsere [Liefer- und Versandbedingungen](#)

Zuschläge

- Mindermengenzuschlag
- Trockeneiszuschlag
- Gefahrgutzuschlag
- Expressversand

SZABO-SCANDIC HandelsgmbH

Quellenstraße 110, A-1100 Wien

T. +43(0)1 489 3961-0

F. +43(0)1 489 3961-7

mail@szabo-scandic.com

www.szabo-scandic.com

[linkedin.com/company/szaboscandic](https://www.linkedin.com/company/szaboscandic) 

MCM4 293T Cell Transient Overexpression Lysate(Denatured)

Catalog # : H00004173-T01

規格 : [100 uL]

List All

Specification

Transfected Cell Line: 293T

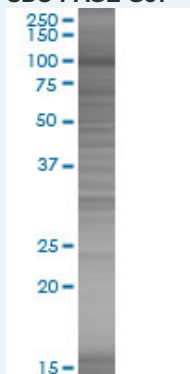
Plasmid: pCMV-MCM4 full-length

Host: Human

Theoretical MW (kDa): 96.6

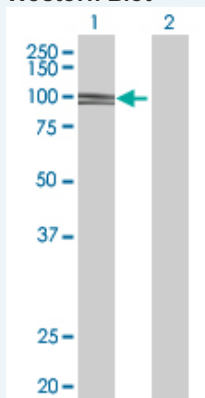
Quality Control Testing: Transient overexpression cell lysate was tested with Anti-MCM4 antibody (H00004173-B01) by Western Blots.

SDS-PAGE Gel



MCM4 transfected lysate.

Western Blot



Lane 1: MCM4 transfected lysate (96.6 KDa)

Lane 2: Non-transfected lysate.

Storage Buffer: 1X Sample Buffer (50 mM Tris-HCl, 2% SDS, 10% glycerol, 300 mM 2-mercaptoethanol, 0.01% Bromophenol blue)

Storage Instruction: Store at -80°C. Aliquot to avoid repeated freezing and thawing.

MSDS:  [Download](#)

Applications

Application Image

Western Blot

Western Blot

Gene Information

Entrez GeneID: [4173](#)

GeneBank [BC031061](#)
Accession#:

Protein [AAH31061](#)
Accession#:

Gene Name: MCM4

Gene Alias: CDC21,CDC54,MGC33310,P1-CDC21,hCdc21

Gene Description: minichromosome maintenance complex component 4

Omim ID: [602638](#)

Gene Ontology: [Hyperlink](#)

Gene Summary: The protein encoded by this gene is one of the highly conserved minichromosome maintenance proteins (MCM) that are essential for the initiation of eukaryotic genome replication. The hexameric protein complex formed by MCM proteins is a key component of the pre-replication complex (pre_RC) and may be involved in the formation of replication forks and in the recruitment of other DNA replication related proteins. The MCM complex consisting of this protein and MCM2, 6 and 7 proteins possesses DNA helicase activity, and may act as a DNA unwinding enzyme. The phosphorylation of this protein by CDC2 kinase reduces the DNA helicase activity and chromatin binding of the MCM complex. This gene is mapped to a region on the chromosome 8 head-to-head next to the PRKDC/DNA-PK, a DNA-activated protein kinase involved in the repair of DNA double-strand breaks. Alternatively spliced transcript variants encoding the same protein have been reported. [provided by RefSeq]

Other Designations: DNA replication licensing factor MCM4,MCM4 minichromosome maintenance deficient 4,homolog of S. pombe cell division cycle 21,minichromosome maintenance deficient 4

Gene Pathway

[Cell cycle](#) [DNA replication](#)

Related Disease

[Genetic Predisposition to Disease](#) [Hematologic Diseases](#) [Occupational Diseases](#)