



SZABO SCANDIC

Part of Europa Biosite

Produktinformation



Forschungsprodukte & Biochemikalien



Zellkultur & Verbrauchsmaterial



Diagnostik & molekulare Diagnostik



Laborgeräte & Service

Weitere Information auf den folgenden Seiten!
See the following pages for more information!



Lieferung & Zahlungsart

siehe unsere [Liefer- und Versandbedingungen](#)

Zuschläge

- Mindermengenzuschlag
- Trockeneiszuschlag
- Gefahrgutzuschlag
- Expressversand

SZABO-SCANDIC HandelsgmbH

Quellenstraße 110, A-1100 Wien

T. +43(0)1 489 3961-0

F. +43(0)1 489 3961-7

mail@szabo-scandic.com

www.szabo-scandic.com

[linkedin.com/company/szaboscandic](https://www.linkedin.com/company/szaboscandic) 



MCM5 purified MaxPab mouse polyclonal antibody (B01P) MaxPab®

Catalog # : H00004174-B01P

規格 : [50 ug]

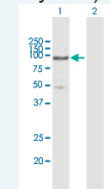
[List All](#)

Specification

Product Description:	Mouse polyclonal antibody raised against a full-length human MCM5 protein.
Immunogen:	MCM5 (NP_006730.2, 1 a.a. ~ 734 a.a) full-length human protein.
Sequence:	<p>MSGFDDPGIFYSDSFGGDAQADEGQARKSQLQRRFKEFLRQYRVGTD RTGFTFKYRDELKRHYNLGEYWIEVEMEDLASFDEDLADLYKQPAEHL QLLEEAAKEVADEVTRPRPSGEEVLQDIQVMLKSDASPSIRSLKSDMMS HLVKIPGIIIAASAVRAKATRISIQCRSCRNTLTNIAMRPGLEGYALPRKCNT DQAGRPKCPLDPYFIMPDKCKCVDFQTLKQLQELPDAVPHGEMPRHMQL YCDRYLCDKVVPGNRVTIMGIYSIKKFGLTTSRGRDRVGVGIRSSYIRVLG IQVDTDGSGRSFAGAVSPQEEEEFRRLAALPNVYEVISKSIAPSIFGGTD MKKAIACLLFGGSRKRLPDGLTRRGDINLLMLGDPGTAKSLLKFVEKC SPIGVYTSKGSSAAGLTASVMRDPSSRNFIEMGGAMVLADGGVVCIDE FDKMREDDRVAIHEAMEQQTISIAGITTTLNSRCSVLAANSVFGRW ETKGEDNIDFMPTILSRFDMIFIVKDEHNEERDVMLAKHVITLHVSALTQTQ AVEGEIDLAKLKKFIAYCRVKCGPRLSAEAAEKLKNRYIIMRSGARQHERD SDRRSSIPITVRQLEAIVRIAEALSKMKLQPFATEADVEEALRLFQVSTLDA ALSGTLSGVEGFTSQEDQEMLSRIEKQLKRRFAIGSQVSEHSIIKDFTKQ KYPEHAIHKVLQLMLRRGEIQHRMQRKVLRYLK</p>
Host:	Mouse
Reactivity:	Human
Quality Control Testing:	Antibody reactive against mammalian transfected lysate.
Storage Buffer:	In 1x PBS, pH 7.4
Storage Instruction:	Store at -20°C or lower. Aliquot to avoid repeated freezing and thawing.
MSDS:	 Download
Datasheet:	 Download

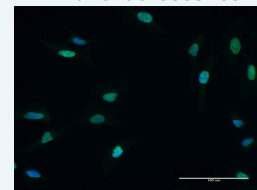
Application Image


Western Blot (Transfected lysate)



 [enlarge](#)

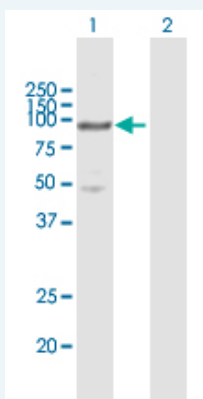
Immunofluorescence



 [enlarge](#)

Applications

Western Blot (Transfected lysate)



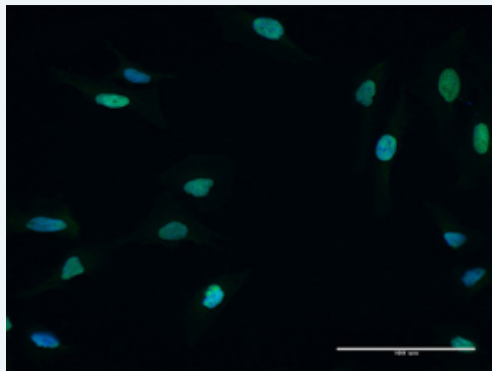
Western Blot analysis of MCM5 expression in transfected 293T cell line ([H00004174-T02](#)) by MCM5 MaxPab polyclonal antibody.

Lane 1: MCM5 transfected lysate(82.30 KDa).

Lane 2: Non-transfected lysate.

 [Protocol Download](#)

Immunofluorescence



 [enlarge this image](#)

Immunofluorescence of [purified](#) MaxPab antibody to MCM5 on HeLa cell. [antibody concentration 10 ug/ml]

 [Protocol Download](#)

Gene Information

Entrez GeneID: [4174](#)

GeneBank [NM_006739](#)
Accession#:

Protein [NP_006730.2](#)
Accession#:

Gene Name: MCM5

Gene Alias: CDC46,MGC5315,P1-CDC46

Gene Description: minichromosome maintenance complex component 5

Omim ID: [602696](#)

Gene Ontology: [Hyperlink](#)

Gene Summary: The protein encoded by this gene is structurally very similar to the CDC46 protein from *S. cerevisiae*, a protein involved in the initiation of DNA replication. The encoded protein is a member of the MCM family of chromatin-binding proteins and can interact with at least two other members of this family. The encoded protein is upregulated in the transition from the G0 to G1/S phase of the cell cycle and may actively participate in cell cycle regulation. [provided by RefSeq]

Other Designations: DNA replication licensing factor,MCM5 minichromosome maintenance deficient 5, cell division cycle 46,minichromosome maintenance deficient 5 (cell division cycle 46)

Gene Pathway

[Cell cycle](#) [DNA replication](#)

Related Disease

[Genetic Predisposition to Disease](#) [Kidney Failure, Chronic](#)

