



SZABO SCANDIC

Part of Europa Biosite

Produktinformation



Forschungsprodukte & Biochemikalien



Zellkultur & Verbrauchsmaterial



Diagnostik & molekulare Diagnostik



Laborgeräte & Service

Weitere Information auf den folgenden Seiten!
See the following pages for more information!



Lieferung & Zahlungsart

siehe unsere [Liefer- und Versandbedingungen](#)

Zuschläge

- Mindermengenzuschlag
- Trockeneiszuschlag
- Gefahrgutzuschlag
- Expressversand

SZABO-SCANDIC HandelsgmbH

Quellenstraße 110, A-1100 Wien

T. +43(0)1 489 3961-0

F. +43(0)1 489 3961-7

mail@szabo-scandic.com

www.szabo-scandic.com

[linkedin.com/company/szaboscandic](https://www.linkedin.com/company/szaboscandic) 

MCM6 polyclonal antibody (A01)

Catalog # : H00004175-A01

規格 : [50 uL]

List All

Specification

Product Description: Mouse polyclonal antibody raised against a partial recombinant MCM6.

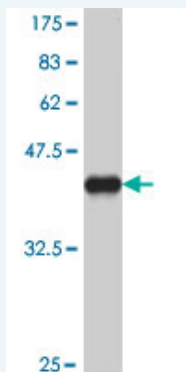
Immunogen: MCM6 (NP_005906, 2 a.a. ~ 110 a.a) partial recombinant protein with GST tag.

Sequence: DLAAAEPGAGSQHLEVRDEVAEKQKFLDFLEEFQSSDGEIKYLQLA
EELIRPERNTLVVSFVDLEQFNQQLSTTIQEEFYRVYPYLCRALKTFVKD
RKEIPLAKDF

Host: Mouse

Reactivity: Human

Quality Control Testing: Antibody Reactive Against Recombinant Protein.



Western Blot detection against Immunogen (38.1 KDa) .

Storage Buffer: 50 % glycerol

Storage Instruction: Store at -20°C or lower. Aliquot to avoid repeated freezing and thawing.

MSDS: [Download](#)

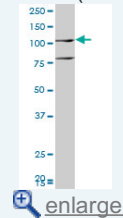
Datasheet: [Download](#)

Applications

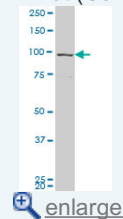
Western Blot (Cell lysate)

Application Image

Western Blot (Cell lysate)

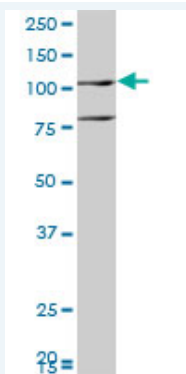


Western Blot (Cell lysate)



Western Blot (Recombinant protein)

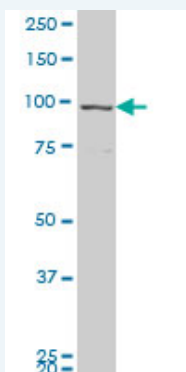
ELISA




MCM6 polyclonal antibody (A01), Lot # ABNOVA060622QCS1. Western Blot analysis of MCM6 expression in U-2 OS.

 [Protocol Download](#)

Western Blot (Cell lysate)



MCM6 polyclonal antibody (A01), Lot # 050919JC01 Western Blot analysis of MCM6 expression in SJCRH30 (Cat # L027V1).

 [Protocol Download](#)

Western Blot (Recombinant protein)

 [Protocol Download](#)

ELISA

Gene Information

Entrez GeneID: [4175](#)

GeneBank [NM_005915](#)
Accession#:

Protein [NP_005906](#)
Accession#:

Gene Name: MCM6

Gene Alias: MCG40308,Mis5,P105MCM

Gene Description: minichromosome maintenance complex component 6

Omim ID: [223100](#), [601806](#)

Gene Ontology: [Hyperlink](#)

Gene Summary: The protein encoded by this gene is one of the highly conserved minichromosome maintenance proteins (MCM) that are essential for the initiation of eukaryotic genome replication. The hexameric protein complex formed by the MCM proteins is a key component of the pre-replication complex (pre_RC) and may be involved in the formation of replication forks and in the recruitment of other DNA replication related

proteins. The MCM complex consisting of this protein and MCM2, 4 and 7 proteins possesses DNA helicase activity, and may act as a DNA unwinding enzyme. The phosphorylation of the complex by CDC2 kinase reduces the helicase activity, suggesting a role in the regulation of DNA replication. [provided by RefSeq]

Other Designations: DNA replication licensing factor MCM6, MCM6 minichromosome maintenance deficient 6 (MIS5 homolog, *S. pombe*), MIS5 homolog, minichromosome maintenance deficient (*mis5*, *S. pombe*) 6, minichromosome maintenance deficient 6 homolog

Gene Pathway

Cell cycle [DNA replication](#)

Related Disease

[Carcinoma, Renal Cell](#) [Genetic Predisposition to Disease](#) [Kidney Neoplasms](#)
[Lactose Intolerance](#) [Ovarian Neoplasms](#)

[服務條款](#) | [隱私權政策](#) | [著作及商標](#) | [網站地圖](#)

©2016 亞諾法生技股份有限公司 Abnova Corporation. 版權所有.