



SZABO SCANDIC

Part of Europa Biosite

Produktinformation



Forschungsprodukte & Biochemikalien



Zellkultur & Verbrauchsmaterial



Diagnostik & molekulare Diagnostik



Laborgeräte & Service

Weitere Information auf den folgenden Seiten!
See the following pages for more information!



Lieferung & Zahlungsart

siehe unsere [Liefer- und Versandbedingungen](#)

Zuschläge

- Mindermengenzuschlag
- Trockeneiszuschlag
- Gefahrgutzuschlag
- Expressversand

SZABO-SCANDIC HandelsgmbH

Quellenstraße 110, A-1100 Wien

T. +43(0)1 489 3961-0

F. +43(0)1 489 3961-7

mail@szabo-scandic.com

www.szabo-scandic.com

[linkedin.com/company/szaboscandic](https://www.linkedin.com/company/szaboscandic) 

MCM6 purified MaxPab mouse polyclonal antibody (B01P) MaxPab®

Catalog # : H00004175-B01P

規格 : [50 ug]

[List All](#)

Specification

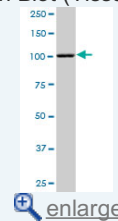
Product Description:	Mouse polyclonal antibody raised against a full-length human MCM6 protein.
Immunogen:	MCM6 (NP_005906.2, 1 a.a. ~ 821 a.a) full-length human protein.
Sequence:	MDLAAAEPGAGSQHLEVRDEVAEKQKLFLEEFQSSDGEIKYLQL AEELIRPERNTLVVSFVLEQFNQQLSTTIQEEFYRVYPYLCRALKT DRKEIPLAKDFYVAFQDLPTRHKIRELTSSRIGLLTRISGQVWRTH PVHPELVSGTFLCLDCQTVIRDVEQQFKYQPNICRNPVCANRRR FLLDTNKSRLFVDFQKVRIQETQAELPRGSIPRSLEVLRAEAVESA QAGDKC DFTGTLIVPDVSKLSTPGARAETNSRVSGVDGYETEGIRL RALGVRDLSYRLVFLACCVAPT NPRFGGKELRDEEQTAESIKNQMT VKEWEKVFEMSQDKNLYHNLCTSLFPTIHGNDEVKRGVLLMLF GGVPKTTGEGTSLRGDINVCIVGDPSTAKSQFLKHVEEFSPRA VYTSKGASSAAGLTAAVRDEESHEFVIEAGALMLADNGVCCID EFDKMDVRDQVAIHEAMEQQTISITKAGVKATLNARTSILAAAN PISGHYDRSKSLKQNINLSAPIMSRFDLFFILVDECNEVTDYA IARRIVDLHSRIEESIDRVYSLDDIRRYLLFARQFKPKISKESE DFIVEQYKHLRQRDGSVTKSSWRITVRQLESMIRLSEAMARMHCC DEVQPKHVKEAFRLNKSIIIRVETPDVNLDQEEEEIQMEVDEGAG GINGHADSPAPVNGINGYNEDINQESAPKASRLRGFSEYCRISN LIVLHLRKVEEEEDSALKRSELVNWYLK EIESEIDSEELINKR IIEKVIHRLTHYDHVLIELTQAGLKGSTEGSESYEEDPYLVVNP NYLLED
Host:	Mouse
Reactivity:	Human
Quality Control Testing:	Antibody reactive against mammalian transfected lysate.
Storage Buffer:	In 1x PBS, pH 7.4
Storage Instruction:	Store at -20°C or lower. Aliquot to avoid repeated freezing and thawing.
MSDS:	Download
Datasheet:	Download

Applications

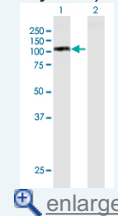
Western Blot (Tissue lysate)

Application Image

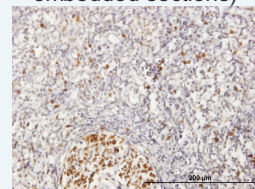
Western Blot (Tissue lysate)



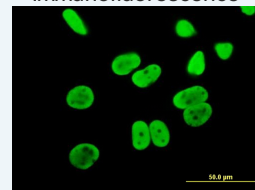
Western Blot (Transfected lysate)



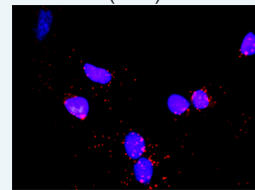
Immunohistochemistry (Formalin/PFA-fixed paraffin-embedded sections)

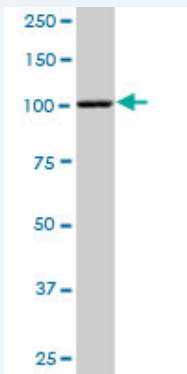


Immunofluorescence



In situ Proximity Ligation Assay (Cell)

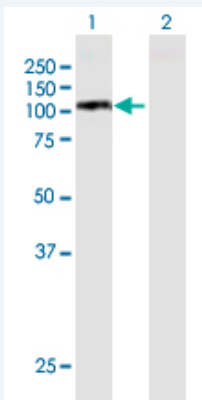




MCM6 MaxPab polyclonal antibody. Western Blot analysis of MCM6 expression in human placenta.

 [Protocol Download](#)

Western Blot (Transfected lysate)



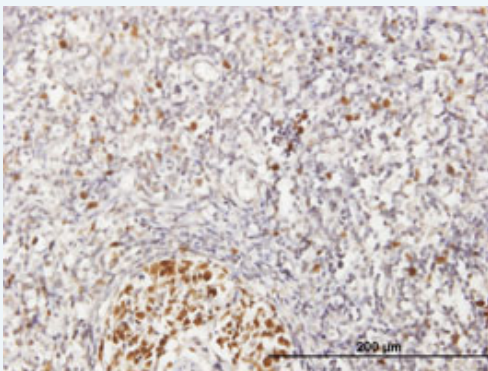
Western Blot analysis of MCM6 expression in transfected 293T cell line ([H00004175-T01](#)) by MCM6 MaxPab polyclonal antibody.

Lane 1: MCM6 transfected lysate(90.31 KDa).

Lane 2: Non-transfected lysate.

 [Protocol Download](#)

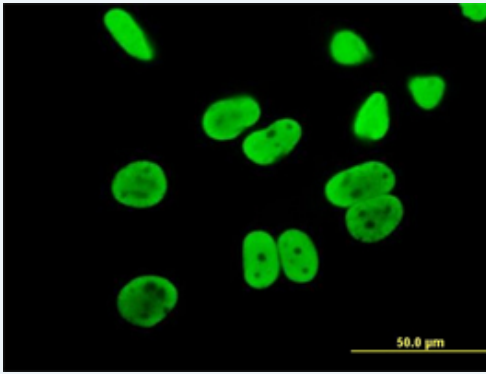
Immunohistochemistry (Formalin/PFA-fixed paraffin-embedded sections)



Immunoperoxidase of purified MaxPab antibody to MCM6 on formalin-fixed paraffin-embedded human lymph node. [antibody concentration 3 ug/ml]

 [Protocol Download](#)

Immunofluorescence

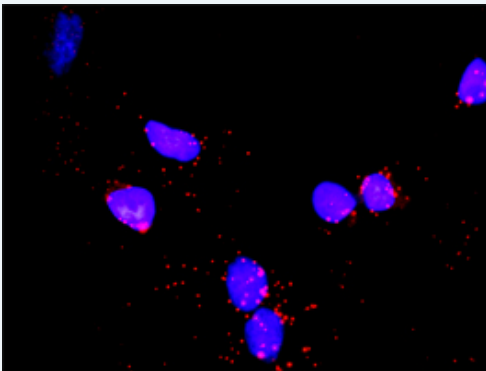


[enlarge this image](#)

Immunofluorescence of purified MaxPab antibody to MCM6 on HeLa cell. [antibody concentration 10 ug/ml]

 [Protocol Download](#)

***In situ* Proximity Ligation Assay (Cell)**



Proximity Ligation Analysis of protein-protein interactions between CDC6 and MCM6. Mahlavu cells were stained with anti-CDC6 rabbit purified polyclonal 1:1200 and anti-MCM6 mouse purified polyclonal antibody 1:50. Each red dot represents the detection of protein-protein interaction complex, and nuclei were counterstained with DAPI (blue).

Gene Information

Entrez GeneID: [4175](#)

GeneBank [NM_005915](#)

Accession#:

Protein [NP_005906.2](#)

Accession#:

Gene Name: MCM6

Gene Alias: MCG40308,Mis5,P105MCM

Gene minichromosome maintenance complex component 6

Description:

Omim ID: [223100](#), [601806](#)

Gene Ontology: [Hyperlink](#)

Gene Summary: The protein encoded by this gene is one of the highly conserved minichromosome maintenance proteins (MCM) that are essential for the initiation of eukaryotic genome replication. The hexameric protein complex formed by the MCM proteins is a key component of the pre-replication complex (pre_RC) and may be involved in the formation of replication forks and in the recruitment of other DNA replication related proteins. The MCM complex consisting of this protein and MCM2, 4 and 7 proteins possesses DNA helicase activity, and may act as a DNA unwinding enzyme. The phosphorylation of the complex by CDC2 kinase reduces the helicase activity, suggesting a role in the regulation of DNA replication. [provided by RefSeq]

Other DNA replication licensing factor MCM6, MCM6 minichromosome
Designations: maintenance deficient 6 (MIS5 homolog, S. pombe), MIS5
homolog, minichromosome maintenance deficient (mis5, S. pombe)
6, minichromosome maintenance deficient 6 homolog

Gene Pathway

[Cell cycle](#) [DNA replication](#)

Related Disease

[Carcinoma, Renal Cell](#) [Genetic Predisposition to Disease](#) [Kidney Neoplasms](#)
[Lactose Intolerance](#) [Ovarian Neoplasms](#)

[服務條款](#) | [隱私權政策](#) | [著作及商標](#) | [網站地圖](#)

©2016 亞諾法生技股份有限公司 Abnova Corporation. 版權所有.