



# SZABO SCANDIC

Part of Europa Biosite

## Produktinformation



Forschungsprodukte & Biochemikalien



Zellkultur & Verbrauchsmaterial



Diagnostik & molekulare Diagnostik



Laborgeräte & Service

Weitere Information auf den folgenden Seiten!  
See the following pages for more information!



### Lieferung & Zahlungsart

siehe unsere [Liefer- und Versandbedingungen](#)

### Zuschläge

- Mindermengenzuschlag
- Trockeneiszuschlag
- Gefahrgutzuschlag
- Expressversand

### SZABO-SCANDIC HandelsgmbH

Quellenstraße 110, A-1100 Wien

T. +43(0)1 489 3961-0

F. +43(0)1 489 3961-7

[mail@szabo-scandic.com](mailto:mail@szabo-scandic.com)

[www.szabo-scandic.com](http://www.szabo-scandic.com)

[linkedin.com/company/szaboscandic](https://www.linkedin.com/company/szaboscandic) 

# MCM6 purified MaxPab rabbit polyclonal antibody (D01P) MaxPab®

Catalog # : H00004175-D01P

規格 : [ 100 ug ]

[List All](#)

## Specification

**Product Description:** Rabbit polyclonal antibody raised against a full-length human MCM6 protein.

**Immunogen:** MCM6 (NP\_005906.2, 1 a.a. ~ 821 a.a) full-length human protein.

**Sequence:**  
 MDLAAAAPGAGSQHLEVRDEVAEKQKLFLEEFQSSDGEIKYLQL  
 AEELIRPERNTLVVSFVLEQFNQQLSTTIQEEFYRVYPYLCRALKT  
 DRKEIPLAKDFYVAFQDLPTRHKIRELTSSRIGLLTRISGQVWR  
 THPVHPELVSGTFLCLDCQTVIRDVEQQFKYTQPNICRNPVCAN  
 RRRFLLDTNKSFRVDFQKVRIQETQAELPRGSIPRSLE  
 VILRAEAVESAQAGDKCFTGTLIVPDVSKLSTPGARAETNS  
 RVSGVDGYETEGIRGLRALGVRDLSYRLVFLACCVAPT  
 NPRFGGKELRDEEQTAESIKNQMTVKEWEKVFEMSQDKNLY  
 HNLCTSLFPTIHGNDEVKRGVLLMLFGGVPKTTGEGTSLR  
 GDINVCIVGDPSTAKSQFLKHVEEFS  
 PRAVYTSKGASSAAGLTA  
 AAVRDEESHEFVIEAGALMLADNGVCCID  
 EFDKMDVRDQVAIHEAMEQQTISITKAGVKATLNART  
 SILAAANPISGHYDRSKSLKQNINLSAPIMSRFDLFFIL  
 VDECNEVTDYAIARRIVDLHSRIEESIDRVYSLDDIR  
 RYLLFARQFKPKISKESEDFIVEQYKHLRQRDGS  
 GVTKSSWRITVRQLESMIRLSEAMARMHCCDEVQPK  
 HVKEAFRLNKSIIRVETPDVNLQEEEEIQMEVDE  
 GAGGINGHADSPAPVNGINGYNEDINQESAPKAS  
 LRLGFSEYCRISNLVHLRKEVEEEDESALKRSEL  
 VNWYLKEIESEIDSEELINKKRIIEKVIHRLTHYD  
 HVLIELTQAGLKGSTEGSESYEEDPYLVVNP  
 NYLLED

**Host:** Rabbit

**Reactivity:** Human

**Quality Control Testing:** Antibody reactive against mammalian transfected lysate.

**Storage Buffer:** In 1x PBS, pH 7.4

**Storage Instruction:** Store at -20°C or lower. Aliquot to avoid repeated freezing and thawing.

**MSDS:** [Download](#)

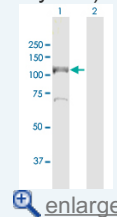
**Datasheet:** [Download](#)

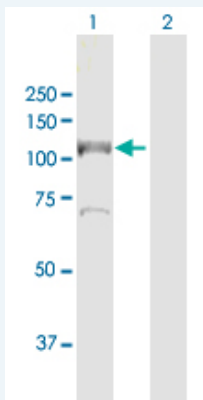
## Applications

**Western Blot (Transfected lysate)**

## Application Image


Western Blot (Transfected lysate)





Western Blot analysis of MCM6 expression in transfected 293T cell line ([H00004175-T02](#)) by MCM6 MaxPab polyclonal antibody.

Lane 1: MCM6 transfected lysate(92.9 KDa).  
Lane 2: Non-transfected lysate.

 [Protocol Download](#)

## Gene Information

**Entrez GeneID:** [4175](#)

**GeneBank Accession#:** [NM\\_005915.4](#)

**Protein Accession#:** [NP\\_005906.2](#)

**Gene Name:** MCM6

**Gene Alias:** MCG40308,Mis5,P105MCM

**Gene Description:** minichromosome maintenance complex component 6

**Omim ID:** [223100](#), [601806](#)

**Gene Ontology:** [Hyperlink](#)

**Gene Summary:** The protein encoded by this gene is one of the highly conserved minichromosome maintenance proteins (MCM) that are essential for the initiation of eukaryotic genome replication. The hexameric protein complex formed by the MCM proteins is a key component of the pre-replication complex (pre\_RC) and may be involved in the formation of replication forks and in the recruitment of other DNA replication related proteins. The MCM complex consisting of this protein and MCM2, 4 and 7 proteins possesses DNA helicase activity, and may act as a DNA unwinding enzyme. The phosphorylation of the complex by CDC2 kinase reduces the helicase activity, suggesting a role in the regulation of DNA replication. [provided by RefSeq]

**Other Designations:** DNA replication licensing factor MCM6,MCM6 minichromosome maintenance deficient 6 (MIS5 homolog, *S. pombe*),MIS5 homolog,minichromosome maintenance deficient (mis5, *S. pombe*) 6,minichromosome maintenance deficient 6 homolog

## Gene Pathway

[Cell cycle](#) [DNA replication](#)

## Related Disease

[Carcinoma, Renal Cell](#) [Genetic Predisposition to Disease](#) [Kidney Neoplasms](#)  
[Lactose Intolerance](#) [Ovarian Neoplasms](#)

---

---

[服務條款](#) | [隱私權政策](#) | [著作及商標](#) | [網站地圖](#)

©2016 亞諾法生技股份有限公司 Abnova Corporation. 版權所有.