



# SZABO SCANDIC

Part of Europa Biosite

## Produktinformation



Forschungsprodukte & Biochemikalien



Zellkultur & Verbrauchsmaterial



Diagnostik & molekulare Diagnostik



Laborgeräte & Service

Weitere Information auf den folgenden Seiten!  
See the following pages for more information!



### Lieferung & Zahlungsart

siehe unsere [Liefer- und Versandbedingungen](#)

### Zuschläge

- Mindermengenzuschlag
- Trockeneiszuschlag
- Gefahrgutzuschlag
- Expressversand

### SZABO-SCANDIC HandelsgmbH

Quellenstraße 110, A-1100 Wien

T. +43(0)1 489 3961-0

F. +43(0)1 489 3961-7

[mail@szabo-scandic.com](mailto:mail@szabo-scandic.com)

[www.szabo-scandic.com](http://www.szabo-scandic.com)

[linkedin.com/company/szaboscandic](https://www.linkedin.com/company/szaboscandic) 

## MCM6 monoclonal antibody (M04), clone 7D8

Catalog # : H00004175-M04

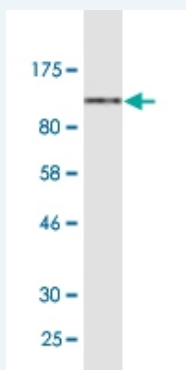
規格 : [ 100 ug ]

[List All](#)

### Specification

<b>Product Description:</b>	Mouse monoclonal antibody raised against a full-length recombinant MCM6.
<b>Immunogen:</b>	MCM6 (NP_005906.2, 1 a.a. ~ 821 a.a) full-length recombinant protein with GST tag. MW of the GST tag alone is 26 KDa.
<b>Sequence:</b>	MDLAAAEPGAGSQHLEVRDEVAEKQCQLFLDFLEEFQSSDGEIKYLQL AEELIRPERNTLVVSVFDLEQFNQQLSTTIQEEFYRVYPYLCRALKTFVK DRKEIPLAKDFYVAFQDLPTRHKIRELTSSRIGLLTRISGQVWRTHPVHPE LVSGTFLCLDCQTVIRDVEQQFKYQPNICRNPVCANRRRFLDNTKSR FVDFQKVRIQETQAEPRGSIPRSLEVILRAEAVESAQAGDKCDFTGTLV VPDVSKLSTPGARAETNSRVSGVDGYETEGIRGLRALGVRDLSYRLVFL ACCVAPTNPFRGGKELRDEEQTAESIKNQMTVKEWEKVFEMSQDKNLY HNLCTSLFPTIHGNDEVKRGVLLMLFGGVPKTTGEGTSLRGDINVCIVGD PSTAKSQFLKHVEEFSRAVYTSKGASSAAGLTAAVRDEESHEFVIEAG ALMLADNGVCCIDFDKMDVDRDQVAIHEAMEQQTISITKAGVKATLNART SILAAANPISGHYDRSKSLKQINLSAPIMSRFDLFFILVDECNEVTDYAIAR RVDLHSRIEESIDRVYSLDDIRRYLLFARQFKPKISKESEDFIVEQYKHLRQ RDGSGVTKSSWRITVRQLESMIRLSEAMARMHCCDEVQPKHVKEAFRL NKSIIRVETPDVNLQEEEEIQMEVDEGAGGINGHADSPAPVNGINGYNEDI NQESAPKASRLRGFSEYCRISNLVHLRKEVEEEDSALKRSELVNWYLK EIESEIDSEELINKKRIIEKVIHRLTHYDHLIELTQAGLKGSTEGSESYEED PYLVVNPNYLLED
<b>Host:</b>	Mouse
<b>Reactivity:</b>	Human
<b>Isotype:</b>	IgG2a Kappa

**Quality Control Testing:** Antibody Reactive Against Recombinant Protein.



Western Blot detection against Immunogen (119.3 KDa) .

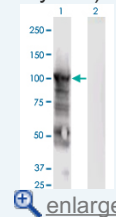
**Storage Buffer:** In 1x PBS, pH 7.4

**Storage Instruction:** Store at -20°C or lower. Aliquot to avoid repeated freezing and thawing.

**Datasheet:**  [Download](#)

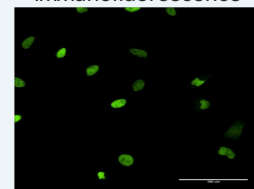
### Application Image

Western Blot (Transfected lysate)

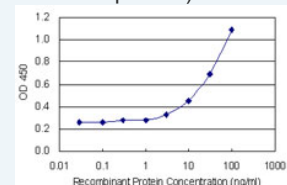


Western Blot (Recombinant protein)

Immunofluorescence



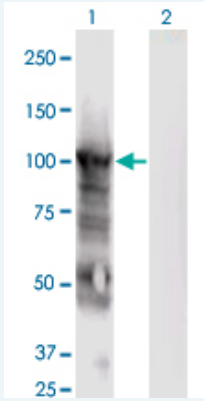
Sandwich ELISA (Recombinant protein)



ELISA

### Applications

### Western Blot (Transfected lysate)



Western Blot analysis of MCM6 expression in transfected 293T cell line by MCM6 monoclonal antibody (M04), clone 7D8.

Lane 1: MCM6 transfected lysate (Predicted MW: 92.9 KDa).

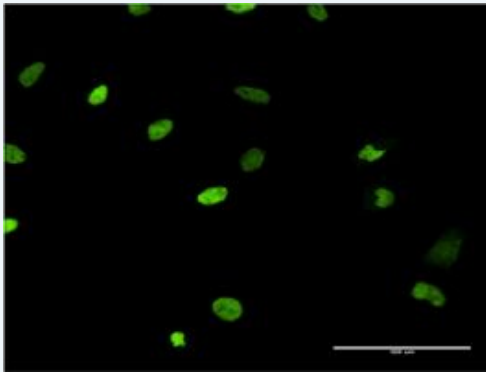
Lane 2: Non-transfected lysate.

[Protocol Download](#)

### Western Blot (Recombinant protein)

[Protocol Download](#)

### Immunofluorescence

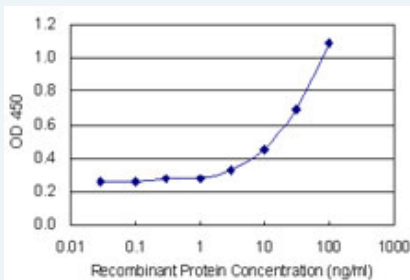


[enlarge this image](#)

Immunofluorescence of monoclonal antibody to MCM6 on HeLa cell . [antibody concentration 10 ug/ml]

[Protocol Download](#)

### Sandwich ELISA (Recombinant protein)



Detection limit for recombinant GST tagged MCM6 is 1 ng/ml as a capture antibody.

[Protocol Download](#)

### ELISA

### Gene Information

Entrez GeneID: [4175](#)

GeneBank [NM\\_005915.4](#)

Accession#:

Protein [NP\\_005906.2](#)

**Accession#:****Gene Name:** MCM6**Gene Alias:** MCG40308,Mis5,P105MCM**Gene Description:** minichromosome maintenance complex component 6**Omim ID:** [223100](#), [601806](#)**Gene Ontology:** [Hyperlink](#)

**Gene Summary:** The protein encoded by this gene is one of the highly conserved mini-chromosome maintenance proteins (MCM) that are essential for the initiation of eukaryotic genome replication. The hexameric protein complex formed by the MCM proteins is a key component of the pre-replication complex (pre\_RC) and may be involved in the formation of replication forks and in the recruitment of other DNA replication related proteins. The MCM complex consisting of this protein and MCM2, 4 and 7 proteins possesses DNA helicase activity, and may act as a DNA unwinding enzyme. The phosphorylation of the complex by CDC2 kinase reduces the helicase activity, suggesting a role in the regulation of DNA replication. [provided by RefSeq]

**Other Designations:** DNA replication licensing factor MCM6,MCM6 minichromosome maintenance deficient 6 (MIS5 homolog, *S. pombe*),MIS5 homolog,minichromosome maintenance deficient (mis5, *S. pombe*) 6,minichromosome maintenance deficient 6 homolog

**Gene Pathway**[Cell cycle DNA replication](#)**Related Disease**[Carcinoma, Renal Cell Genetic Predisposition to Disease Kidney Neoplasms](#)  
[Lactose Intolerance Ovarian Neoplasms](#)