



SZABO SCANDIC

Part of Europa Biosite

Produktinformation



Forschungsprodukte & Biochemikalien



Zellkultur & Verbrauchsmaterial



Diagnostik & molekulare Diagnostik



Laborgeräte & Service

Weitere Information auf den folgenden Seiten!
See the following pages for more information!



Lieferung & Zahlungsart

siehe unsere [Liefer- und Versandbedingungen](#)

Zuschläge

- Mindermengenzuschlag
- Trockeneiszuschlag
- Gefahrgutzuschlag
- Expressversand

SZABO-SCANDIC HandelsgmbH

Quellenstraße 110, A-1100 Wien

T. +43(0)1 489 3961-0

F. +43(0)1 489 3961-7

mail@szabo-scandic.com

www.szabo-scandic.com

[linkedin.com/company/szaboscandic](https://www.linkedin.com/company/szaboscandic) 

MCM6 293T Cell Transient Overexpression Lysate(Denatured)

Catalog # : H00004175-T01

規格 : [100 uL]

List All

Specification

Transfected Cell Line: 293T

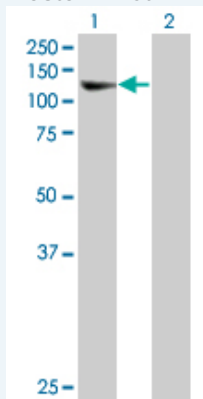
Plasmid: pCMV-MCM6 full-length

Host: Human

Theoretical MW (kDa): 90.42

Quality Control Testing: Transient overexpression cell lysate was tested with Anti-MCM6 antibody (H00004175-B01) by Western Blots.

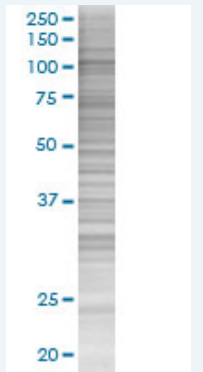
Western Blot



Lane 1: MCM6 transfected lysate (90.42 KDa)

Lane 2: Non-transfected lysate.

SDS-PAGE Gel



MCM6 transfected lysate.

Storage Buffer: 1X Sample Buffer (50 mM Tris-HCl, 2% SDS, 10% glycerol, 300 mM 2-mercaptoethanol, 0.01% Bromophenol blue)

Storage Instruction: Store at -80°C. Aliquot to avoid repeated freezing and thawing.

MSDS:  [Download](#)

Applications

Application Image

Western Blot

Western Blot

Gene Information

Entrez GeneID: [4175](#)

GeneBank Accession#: [NM_005915](#)

Protein Accession#: [NP_005906](#)

Gene Name: MCM6

Gene Alias: MCG40308,Mis5,P105MCM

Gene Description: minichromosome maintenance complex component 6

Omim ID: [223100](#), [601806](#)

Gene Ontology: [Hyperlink](#)

Gene Summary: The protein encoded by this gene is one of the highly conserved minichromosome maintenance proteins (MCM) that are essential for the initiation of eukaryotic genome replication. The hexameric protein complex formed by the MCM proteins is a key component of the pre-replication complex (pre_RC) and may be involved in the formation of replication forks and in the recruitment of other DNA replication related proteins. The MCM complex consisting of this protein and MCM2, 4 and 7 proteins possesses DNA helicase activity, and may act as a DNA unwinding enzyme. The phosphorylation of the complex by CDC2 kinase reduces the helicase activity, suggesting a role in the regulation of DNA replication. [provided by RefSeq]

Other Designations: DNA replication licensing factor MCM6,MCM6 minichromosome maintenance deficient 6 (MIS5 homolog, *S. pombe*),MIS5 homolog,minichromosome maintenance deficient (mis5, *S. pombe*) 6,minichromosome maintenance deficient 6 homolog

Gene Pathway

Cell cycle [DNA replication](#)

Related Disease

[Carcinoma, Renal Cell Genetic Predisposition to Disease Kidney Neoplasms](#)
[Lactose Intolerance Ovarian Neoplasms](#)