



SZABO SCANDIC

Part of Europa Biosite

Produktinformation



Forschungsprodukte & Biochemikalien



Zellkultur & Verbrauchsmaterial



Diagnostik & molekulare Diagnostik



Laborgeräte & Service

Weitere Information auf den folgenden Seiten!
See the following pages for more information!



Lieferung & Zahlungsart

siehe unsere [Liefer- und Versandbedingungen](#)

Zuschläge

- Mindermengenzuschlag
- Trockeneiszuschlag
- Gefahrgutzuschlag
- Expressversand

SZABO-SCANDIC HandelsgmbH

Quellenstraße 110, A-1100 Wien

T. +43(0)1 489 3961-0

F. +43(0)1 489 3961-7

mail@szabo-scandic.com

www.szabo-scandic.com

[linkedin.com/company/szaboscandic](https://www.linkedin.com/company/szaboscandic) 

MCM7 monoclonal antibody (M01), clone 6C2

Catalog # : H00004176-M01

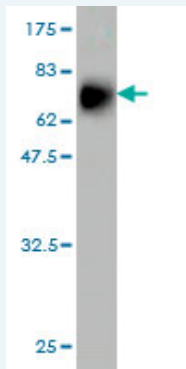
規格 : [100 ug]

[List All](#)

Specification

Product Description:	Mouse monoclonal antibody raised against a full length recombinant MCM7.
Immunogen:	MCM7 (AAH09398, 1 a.a. ~ 389 a.a) full-length recombinant protein with GST tag. MW of the GST tag alone is 26 KDa.
Sequence:	MALKDYALEKEKVKKFLQEFYQDDELGKKQFKYGNQLVRLAHREQVAL YVDLDDVAEDDPELVDSICENARRYAKLFADAVQELLPQYKEREVVKND VLDVYIEHRLMMEQRSDPGMVRSPQNQYPAELMRFELYFQGPSSSK PRVIREVRADSVGKLVTVRGMTRVSEVKPKMVVATYTCDCGAETYQPI QSPTFMPLMCPSEQECQTNRSGGRLYLQTRGSRFIKQEMKMQEHSDQ VPVGNIPRSITLVEGENTRIAQPGDHVSVTGIFLPILRTGFRQVWQGLLS ETYLEAHRIVKMNKSEDDGAGELTREELRQIADVIFATVRELVSGGRS VRFSEAEQRCVSRGFTPAQFQAALDEYEELNWWQVNASRTRITFV
Host:	Mouse
Reactivity:	Human
Isotype:	IgG2a Kappa

Quality Control Testing: Antibody Reactive Against Recombinant Protein.



Western Blot detection against Immunogen (68.53 KDa) .

Storage Buffer: In 1x PBS, pH 7.4

Storage Instruction: Store at -20°C or lower. Aliquot to avoid repeated freezing and thawing.

MSDS: [Download](#)

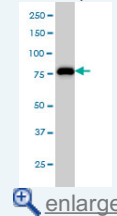
Datasheet: [Download](#)

Publication Reference

1. Etiological role of human papillomavirus infection for inverted papilloma of the bladder. Shigehara K, Sasagawa T, Doorbar J, Kawaguchi S, Kobori Y, Nakashima T, Shimamura M, Maeda Y, Miyagi T, Kitagawa Y, Kadono Y, Konaka H, Mizokami A, Koh E, Namiki M. *J Med Virol.* 2011 Feb;83(2):277-85.
2. Etiologic role of human papillomavirus infection in bladder carcinoma.

Application Image

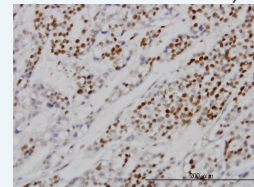
Western Blot (Cell lysate)



[enlarge](#)

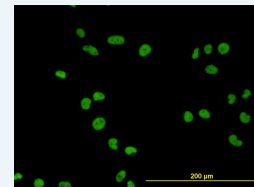
Western Blot (Recombinant protein)

Immunohistochemistry (Formalin/PFA-fixed paraffin-embedded sections)



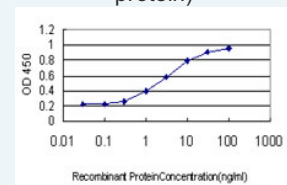
[enlarge](#)

Immunofluorescence



[enlarge](#)

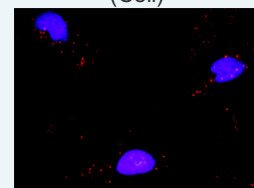
Sandwich ELISA (Recombinant protein)



[enlarge](#)

ELISA

In situ Proximity Ligation Assay (Cell)



[enlarge](#)

In situ Proximity Ligation Assay (Cell)

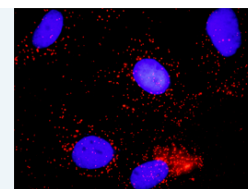
Shigehara K, Sasagawa T, Kawaguchi S, Nakashima T, Shimamura M, Maeda Y, Konaka H, Mizokami A, Koh E, Namiki M. *Cancer*. 2010 Nov 29. [Epub ahead of print]

3. [Minichromosome maintenance proteins 2, 3 and 7 in medulloblastoma: overexpression and involvement in regulation of cell migration and invasion.](#)

Lau KM, Chan QK, Pang JC, Li KK, Yeung WW, Chung NY, Lui PC, Tam YS, Li HM, Zhou L, Wang Y, Mao Y, Ng HK. *Oncogene*. 2010 Jul 26. [Epub ahead of print]

4. [Validation of different replication markers for the detection of beta-cell proliferation in human pancreatic tissue.](#)

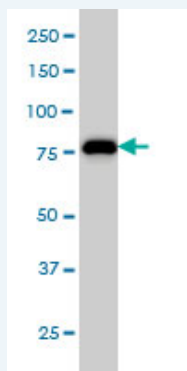
Kohler CU, Kreuter A, Rozykowski MC, Rahmel T, Uhl W, Tannapfel A, Schmidt WE, Meier JJ. *Regul Pept*. 2010 Jan 14. [Epub ahead of print]



[enlarge](#)

Applications

Western Blot (Cell lysate)



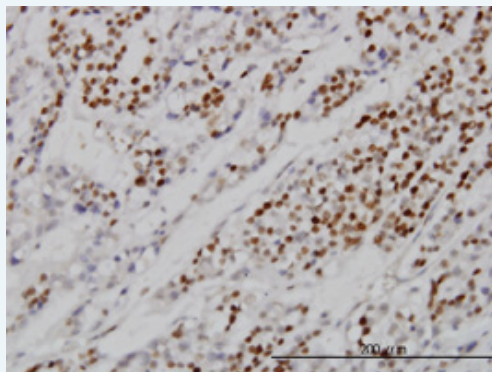
MCM7 monoclonal antibody (M01), clone 6C2 Western Blot analysis of MCM7 expression in HeLa S3 NE (Cat # L013V3).

[Protocol Download](#)

Western Blot (Recombinant protein)

[Protocol Download](#)

Immunohistochemistry (Formalin/PFA-fixed paraffin-embedded sections)

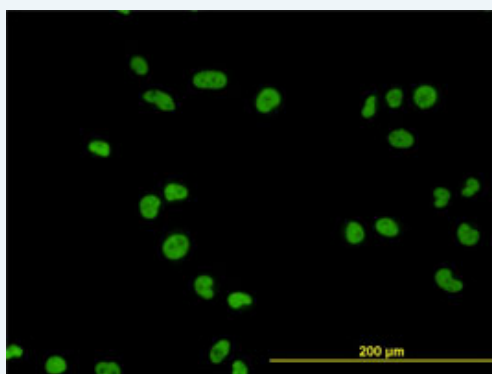


[enlarge this image](#)

Immunoperoxidase of monoclonal antibody to MCM7 on formalin-fixed paraffin-embedded human ovary, clear cell carcinoma. [antibody concentration 3 ug/ml]

[Protocol Download](#)

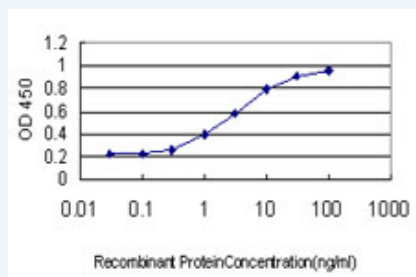
Immunofluorescence



[enlarge this image](#)

Immunofluorescence of monoclonal antibody to MCM7 on HeLa cell. [antibody concentration 10 ug/ml]

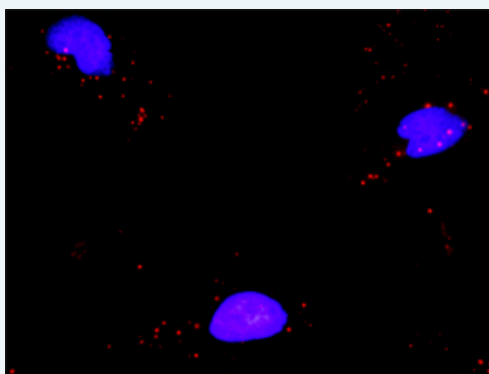
Sandwich ELISA (Recombinant protein)



Detection limit for recombinant GST tagged MCM7 is approximately 0.1ng/ml as a capture antibody.

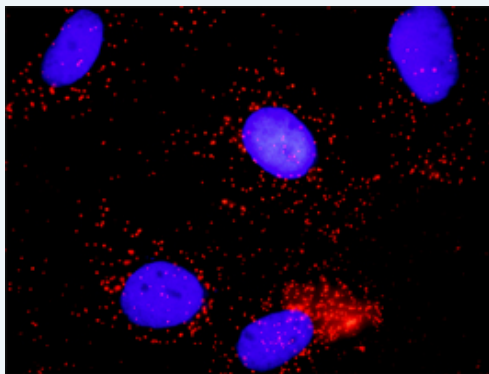
ELISA

In situ Proximity Ligation Assay (Cell)



Proximity Ligation Analysis of protein-protein interactions between CDK7 and MCM7. HeLa cells were stained with anti-CDK7 rabbit purified polyclonal 1:1200 and anti-MCM7 mouse monoclonal antibody 1:50. Each red dot represents the detection of protein-protein interaction complex, and nuclei were counterstained with DAPI (blue).

In situ Proximity Ligation Assay (Cell)



Proximity Ligation Analysis of protein-protein interactions between CDC6 and MCM7. Huh7 cells were stained with anti-CDC6 rabbit purified polyclonal 1:600 and anti-MCM7 mouse monoclonal antibody 1:100. Each red dot represents the detection of protein-protein interaction complex, and nuclei were counterstained with DAPI (blue).

Gene Information

Entrez GeneID: [4176](#)

GeneBank [BC009398](#)
Accession#:

Protein [AAH09398](#)
Accession#:

Gene Name: MCM7

Gene Alias: CDABP0042,CDC47,MCM2,P1.1-MCM3,P1CDC47,P85MCM,PNAS-146

Gene Description: minichromosome maintenance complex component 7

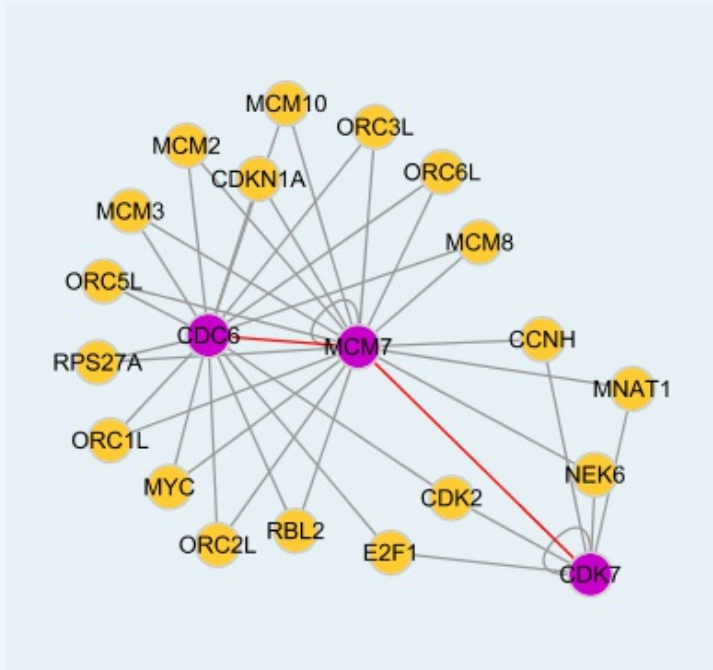
Omim ID: [600592](#)

Gene Ontology: [Hyperlink](#)

Gene Summary: The protein encoded by this gene is one of the highly conserved minichromosome maintenance proteins (MCM) that are essential for the initiation of eukaryotic genome replication. The hexameric protein complex formed by the MCM proteins is a key component of the pre-replication complex (pre_RC) and may be involved in the formation of replication forks and in the recruitment of other DNA replication related proteins. The MCM complex consisting of this protein and MCM2, 4 and 6 proteins possesses DNA helicase activity, and may act as a DNA unwinding enzyme. Cyclin D1-dependent kinase, CDK4, is found to associate with this protein, and may regulate the binding of this protein with the tumoursuppressor protein RB1/RB. Alternatively spliced transcript variants encoding distinct isoforms have been reported. [provided by RefSeq]

Other Designations: DNA replication licensing factor MCM7,MCM7 minichromosome maintenance deficient 7,homolog of S. cerevisiae Cdc47,minichromosome maintenance deficient 7

Interactome



Gene Pathway

Cell cycle [DNA replication](#)

Related Disease

[Autistic Disorder](#) [Genetic Predisposition to Disease](#)