



SZABO SCANDIC

Part of Europa Biosite

Produktinformation



Forschungsprodukte & Biochemikalien



Zellkultur & Verbrauchsmaterial



Diagnostik & molekulare Diagnostik



Laborgeräte & Service

Weitere Information auf den folgenden Seiten!
See the following pages for more information!



Lieferung & Zahlungsart

siehe unsere [Liefer- und Versandbedingungen](#)

Zuschläge

- Mindermengenzuschlag
- Trockeneiszuschlag
- Gefahrgutzuschlag
- Expressversand

SZABO-SCANDIC HandelsgmbH

Quellenstraße 110, A-1100 Wien

T. +43(0)1 489 3961-0

F. +43(0)1 489 3961-7

mail@szabo-scandic.com

www.szabo-scandic.com

[linkedin.com/company/szaboscandic](https://www.linkedin.com/company/szaboscandic) 

ADAM11 polyclonal antibody (A01)

Catalog # : H00004185-A01

規格 : [50 uL]

List All

Specification

Product Description: Mouse polyclonal antibody raised against a partial recombinant ADAM11.

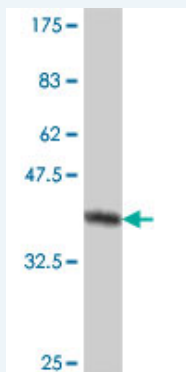
Immunogen: ADAM11 (NP_002381, 230 a.a. ~ 333 a.a) partial recombinant protein with GST tag.

Sequence: GHPTVHSETKYVELIVINDHQLFEQMRQSWLTSNFAKSVNVLADVIYKEQ
LNTRIVLVAMETWADGDKIQVQDDLLETLARLMVYRREGLPEPSDATHL
FSGR

Host: Mouse

Reactivity: Human

Quality Control Testing: Antibody Reactive Against Recombinant Protein.



Western Blot detection against Immunogen (37.55 KDa) .

Storage Buffer: 50 % glycerol

Storage Instruction: Store at -20°C or lower. Aliquot to avoid repeated freezing and thawing.

MSDS: [Download](#)

Datasheet: [Download](#)

Applications

Western Blot (Recombinant protein)

[Protocol Download](#)

ELISA

Gene Information

Entrez GeneID: [4185](#)

GeneBank Accession#: [NM_002390](#)

Application Image

Western Blot (Recombinant protein)

ELISA

Protein Accession#: [NP_002381](#)

Gene Name: ADAM11

Gene Alias: MDC

Gene Description: ADAM metallopeptidase domain 11

Omim ID: [155120](#)

Gene Ontology: [Hyperlink](#)

Gene Summary: This gene encodes a member of the ADAM (a disintegrin and metalloprotease) protein family. Members of this family are membrane-anchored proteins structurally related to snake venom disintegrins, and have been implicated in a variety of biological processes involving cell-cell and cell-matrix interactions, including fertilization, muscle development, and neurogenesis. This gene represents a candidate tumor suppressor gene for human breast cancer based on its location within a minimal region of chromosome 17q21 previously defined by tumor deletion mapping. [provided by RefSeq]

Other Designations: a disintegrin and metalloproteinase domain 11, metalloproteinase-like, disintegrin-like, cysteine-rich protein

Related Disease

[Alcoholism](#)