



# SZABO SCANDIC

Part of Europa Biosite

## Produktinformation



Forschungsprodukte & Biochemikalien



Zellkultur & Verbrauchsmaterial



Diagnostik & molekulare Diagnostik



Laborgeräte & Service

Weitere Information auf den folgenden Seiten!  
See the following pages for more information!



### Lieferung & Zahlungsart

siehe unsere [Liefer- und Versandbedingungen](#)

### Zuschläge

- Mindermengenzuschlag
- Trockeneiszuschlag
- Gefahrgutzuschlag
- Expressversand

### SZABO-SCANDIC HandelsgmbH

Quellenstraße 110, A-1100 Wien

T. +43(0)1 489 3961-0

F. +43(0)1 489 3961-7

[mail@szabo-scandic.com](mailto:mail@szabo-scandic.com)

[www.szabo-scandic.com](http://www.szabo-scandic.com)

[linkedin.com/company/szaboscandic](https://www.linkedin.com/company/szaboscandic) 

## MDFI monoclonal antibody (M07), clone 3B4

Catalog # : H00004188-M07

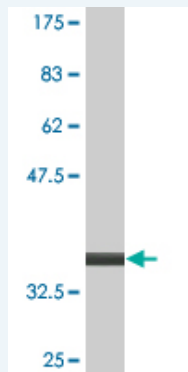
規格 : [ 100 ug ]

[List All](#)

### Specification

<b>Product Description:</b>	Mouse monoclonal antibody raised against a partial recombinant MDFI.
<b>Immunogen:</b>	MDFI (NP_005577, 33 a.a. ~ 110 a.a) partial recombinant protein with GST tag. MW of the GST tag alone is 26 KDa.
<b>Sequence:</b>	PGLEWVTGSTHPAEAAPEEGSLEEAATPMPQGNPGIPQGLDSTDLDV PTEAVTCQPQGNPLGCTPLLPNDSGHPSEL
<b>Host:</b>	Mouse
<b>Reactivity:</b>	Human
<b>Isotype:</b>	IgG2a Kappa

**Quality Control Testing:** Antibody Reactive Against Recombinant Protein.



Western Blot detection against Immunogen (34.32 KDa) .

**Storage Buffer:** In 1x PBS, pH 7.4

**Storage Instruction:** Store at -20°C or lower. Aliquot to avoid repeated freezing and thawing.

**MSDS:** [Download](#)

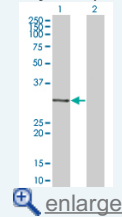
**Datasheet:** [Download](#)

### Applications

Western Blot (Transfected lysate)

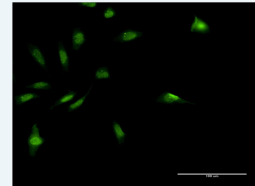
### Application Image

Western Blot (Transfected lysate)



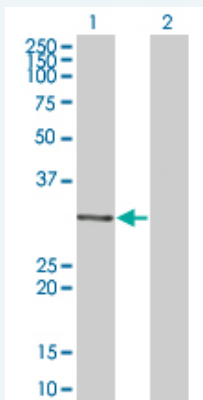
Western Blot (Recombinant protein)

Immunofluorescence



Sandwich ELISA (Recombinant protein)

ELISA



Western Blot analysis of MDFI expression in transfected 293T cell line by MDFI monoclonal antibody (M07), clone 3B4.

Lane 1: MDFI transfected lysate(25.029 KDa).

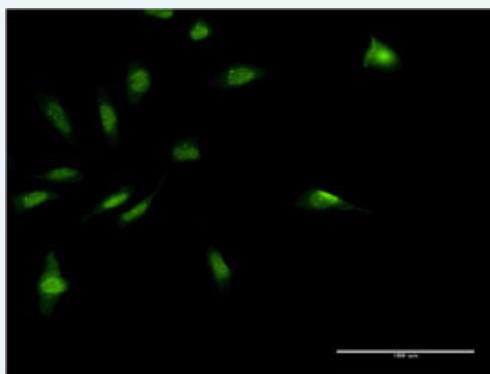
Lane 2: Non-transfected lysate.


 [Protocol Download](#)

### Western Blot (Recombinant protein)


 [Protocol Download](#)

### Immunofluorescence



 [enlarge this image](#)

Immunofluorescence of monoclonal antibody to MDFI on HeLa cell . [antibody concentration 10 ug/ml]

 [Protocol Download](#)

### Sandwich ELISA (Recombinant protein)

Detection limit for recombinant GST tagged MDFI is approximately 10ng/ml as a capture antibody.

 [Protocol Download](#)

### ELISA

#### Gene Information

Entrez GeneID: [4188](#)

GeneBank [NM\\_005586](#)

Accession#:

Protein [NP\\_005577](#)

Accession#:

Gene Name: MDFI

Gene Alias: I-MF, I-mfa

Gene Description: MyoD family inhibitor

Omim ID: [604971](#)

**Gene Ontology:** [Hyperlink](#)

**Gene Summary:** This protein is a transcription factor that negatively regulates other myogenic family proteins. Studies of the mouse homolog, I-mf, show that it interferes with myogenic factor function by masking nuclear localization signals and preventing DNA binding. Knockout mouse studies show defects in the formation of vertebrae and ribs that also involve cartilage formation in these structures. [provided by RefSeq]

**Other Designations:** OTTHUMP00000016375,OTTHUMP000000196414,inhibitor of MyoD family a

---

[服務條款](#) | [隱私權政策](#) | [著作及商標](#) | [網站地圖](#)

©2016 亞諾法生技股份有限公司 Abnova Corporation. 版權所有.