



SZABO SCANDIC

Part of Europa Biosite

Produktinformation



Forschungsprodukte & Biochemikalien



Zellkultur & Verbrauchsmaterial



Diagnostik & molekulare Diagnostik



Laborgeräte & Service

Weitere Information auf den folgenden Seiten!
See the following pages for more information!



Lieferung & Zahlungsart

siehe unsere [Liefer- und Versandbedingungen](#)

Zuschläge

- Mindermengenzuschlag
- Trockeneiszuschlag
- Gefahrgutzuschlag
- Expressversand

SZABO-SCANDIC HandelsgmbH

Quellenstraße 110, A-1100 Wien

T. +43(0)1 489 3961-0

F. +43(0)1 489 3961-7

mail@szabo-scandic.com

www.szabo-scandic.com

[linkedin.com/company/szaboscandic](https://www.linkedin.com/company/szaboscandic) 

MDH1 purified MaxPab rabbit polyclonal antibody (D01P) MaxPab®

Catalog # : H00004190-D01P

規格 : [100 ug]

[List All](#)

Specification

Product Description: Rabbit polyclonal antibody raised against a full-length human MDH1 protein.

Immunogen: MDH1 (NP_005908.1, 1 a.a. ~ 334 a.a) full-length human protein.

Sequence:
 MSEPIRVLVTGAAGQIAYSLLYSIGNSVFGKDQPIILVLLDITPMMGVLDG
 VLMELQDCALPLLKDVATDKEDVAFKDLDVAILVGSMPRREGMERKDLL
 KANVKIFKSQGAALDKYAKKSVKVVVGNPANTNCLTASKSAPSIPKENFS
 CLTRLDHNRKAQIALKLGVTANDVKNVIVGNHSTQYPDVNHAKVKLQ
 GKEVGVYEALKDDSWLKGEFVTTVQQRGAAVIKARKLSSAMSAKAICD
 HVRDIWFGTPEGEFVSMGVIDGNSYGVPPDLLYSFPVVIKNKTWKFE
 GLPINDFSREKMDLTAKELTEEKESAFELSSA

Host: Rabbit

Reactivity: Human

Quality Control Testing: Antibody reactive against mammalian transfected lysate.

Storage Buffer: In 1x PBS, pH 7.4

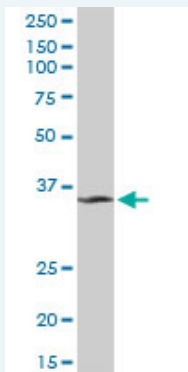
Storage Instruction: Store at -20°C or lower. Aliquot to avoid repeated freezing and thawing.

MSDS:  [Download](#)


Datasheet:  [Download](#)

Applications

Western Blot (Tissue lysate)



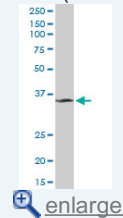
MDH1 MaxPab rabbit polyclonal antibody. Western Blot analysis of MDH1 expression in human spleen.

 [Protocol Download](#)

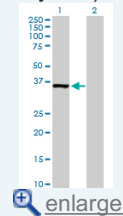
Western Blot (Transfected lysate)

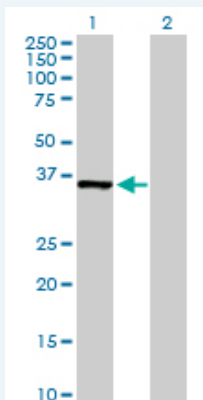
Application Image

Western Blot (Tissue lysate)



Western Blot (Transfected lysate)






Western Blot analysis of MDH1 expression in transfected 293T cell line ([H00004190-T01](#)) by MDH1 MaxPab polyclonal antibody.

Lane 1: MDH1 transfected lysate(36.40 KDa).

Lane 2: Non-transfected lysate.

 [Protocol Download](#)

Gene Information

Entrez GeneID: [4190](#)

GeneBank [NM_005917.2](#)

Accession#:

Protein [NP_005908.1](#)

Accession#:

Gene Name: MDH1

Gene Alias: MDH-s,MDHA,MGC:1375,MOR2

Gene malate dehydrogenase 1, NAD (soluble)

Description:

Omim ID: [154200](#)

Gene Ontology: [Hyperlink](#)

Gene Summary: Malate dehydrogenase catalyzes the reversible oxidation of malate to oxaloacetate, utilizing the NAD/NADH cofactor system in the citric acid cycle. The protein encoded by this gene is localized to the cytoplasm and may play pivotal roles in the malate-aspartate shuttle that operates in the metabolic coordination between cytosol and mitochondria. [provided by RefSeq]

Other cytosolic malate dehydrogenase,soluble malate dehydrogenase

Designations:

Gene Pathway

[Biosynthesis of alkaloids derived from histidine and purine](#)

[Biosynthesis of alkaloids derived from ornithine, lysine and nicotinic acid](#)

[Biosynthesis of alkaloids derived from shikimate pathway](#)

[Biosynthesis of alkaloids derived from terpenoid and polyketide](#)

[Biosynthesis of phenylpropanoids](#) [Biosynthesis of plant hormones](#)

[Biosynthesis of terpenoids and steroids](#) [Carbon fixation in photosynthetic organisms](#)

[Citrate cycle \(TCA cycle\)](#) [Glyoxylate and dicarboxylate metabolism](#) [Metabolic pathways](#)

[Pyruvate metabolism](#) [Reductive carboxylate cycle \(CO2 fixation\)](#)

Related Disease

[Drug Toxicity](#) [Edema](#) [Hypercholesterolemia](#)

