



SZABO SCANDIC

Part of Europa Biosite

Produktinformation



Forschungsprodukte & Biochemikalien



Zellkultur & Verbrauchsmaterial



Diagnostik & molekulare Diagnostik



Laborgeräte & Service

Weitere Information auf den folgenden Seiten!
See the following pages for more information!



Lieferung & Zahlungsart

siehe unsere [Liefer- und Versandbedingungen](#)

Zuschläge

- Mindermengenzuschlag
- Trockeneiszuschlag
- Gefahrgutzuschlag
- Expressversand

SZABO-SCANDIC HandelsgmbH

Quellenstraße 110, A-1100 Wien

T. +43(0)1 489 3961-0

F. +43(0)1 489 3961-7

mail@szabo-scandic.com

www.szabo-scandic.com

[linkedin.com/company/szaboscandic](https://www.linkedin.com/company/szaboscandic) 

MDH1 monoclonal antibody (M01), clone 2B11-B7

Catalog # : H00004190-M01

規格 : [100 ug]

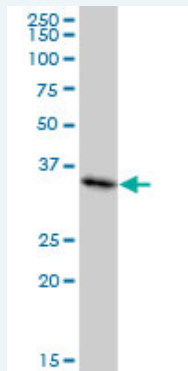
[List All](#)

Specification

Product Description:	Mouse monoclonal antibody raised against a full length recombinant MDH1.
Immunogen:	MDH1 (AAH01484.1, 1 a.a. ~ 334 a.a) full-length recombinant protein with GST tag. MW of the GST tag alone is 26 KDa.
Sequence:	MSEPIRVLVTGAAGQIAYSLLYSIGNSVFGKDQPIILVLLDITPMMGVLDG VLMELQDCALPLLKDVIAATDKEDVAFKDLDVAILVGSMPRREGMERKDLL KANVKIFKSQGAALDKYAKKSVKIVVGNPANTNCLTASKSAPSIPKENFS CLTRLDHNRKAQIALKLGVTANDVKNVIWGNHSSQYYPDYNHAKVKLQ GKEVGVYEALKDDSWLKGEFVTTVQQRGAAVIKARKLSSAMSAKAICD HVRDIWFGTPEGEFVSMGVISDGNSYVPPDLLYSFPVVIKNTWKVFE GLPINDFSREKMDLTAKELTEEKESAFEFLLSSA
Host:	Mouse
Reactivity:	Human
Isotype:	IgG2b Kappa
Quality Control Testing:	Antibody Reactive Against Recombinant Protein.
Storage Buffer:	In 1x PBS, pH 7.4
Storage Instruction:	Store at -20°C or lower. Aliquot to avoid repeated freezing and thawing.
MSDS:	Download
Datasheet:	Download

Applications

Western Blot (Cell lysate)



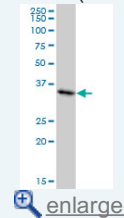
MDH1 monoclonal antibody (M01), clone 2B11-B7. Western Blot analysis of MDH1 expression in HeLa (Cat # L013V1).

[Protocol Download](#)

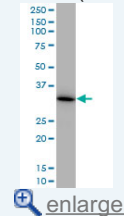
Western Blot (Cell lysate)

Application Image

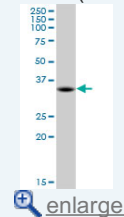
Western Blot (Cell lysate)



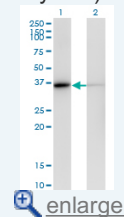
Western Blot (Cell lysate)



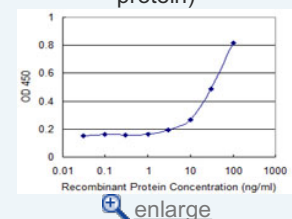
Western Blot (Cell lysate)



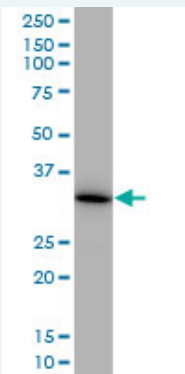
Western Blot (Transfected lysate)



Sandwich ELISA (Recombinant protein)



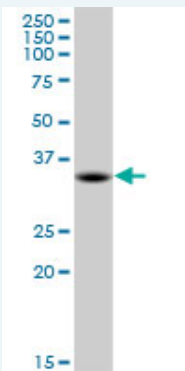
ELISA



MDH1 monoclonal antibody (M01), clone 2B11-B7. Western Blot analysis of MDH1 expression in HepG2 (Cat # L019V1).

[Protocol Download](#)

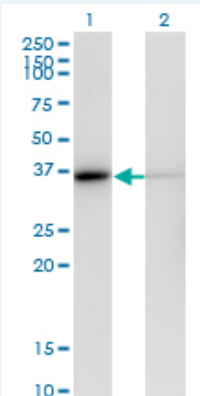
Western Blot (Cell lysate)



MDH1 monoclonal antibody (M01), clone 2B11-B7. Western Blot analysis of MDH1 expression in HL-60 (Cat # L014V1).

[Protocol Download](#)

Western Blot (Transfected lysate)



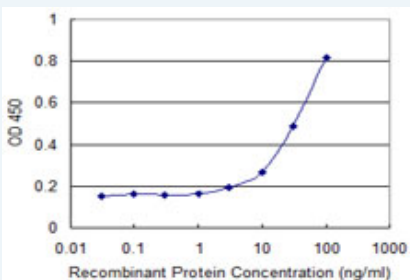
Western Blot analysis of MDH1 expression in transfected 293T cell line by MDH1 monoclonal antibody (M01), clone 2B11-B7.

Lane 1: MDH1 transfected lysate(36.4 KDa).

Lane 2: Non-transfected lysate.

[Protocol Download](#)

Sandwich ELISA (Recombinant protein)



Detection limit for recombinant GST tagged MDH1 is approximately 3ng/ml as a capture antibody.

ELISA

Gene Information

Entrez GeneID: [4190](#)

GeneBank Accession#: [BC001484](#)

Protein Accession#: [AAH01484.1](#)

Gene Name: MDH1

Gene Alias: MDH-s,MDHA,MGC:1375,MOR2

Gene Description: malate dehydrogenase 1, NAD (soluble)

Omim ID: [154200](#)

Gene Ontology: [Hyperlink](#)

Gene Summary: Malate dehydrogenase catalyzes the reversible oxidation of malate to oxaloacetate, utilizing the NAD/NADH cofactor system in the citric acid cycle. The protein encoded by this gene is localized to the cytoplasm and may play pivotal roles in the malate-aspartate shuttle that operates in the metabolic coordination between cytosol and mitochondria. [provided by RefSeq]

Other Designations: cytosolic malate dehydrogenase,soluble malate dehydrogenase

Gene Pathway

- [Biosynthesis of alkaloids derived from histidine and purine](#)
- [Biosynthesis of alkaloids derived from ornithine, lysine and nicotinic acid](#)
- [Biosynthesis of alkaloids derived from shikimate pathway](#)
- [Biosynthesis of alkaloids derived from terpenoid and polyketide](#)
- [Biosynthesis of phenylpropanoids](#) [Biosynthesis of plant hormones](#)
- [Biosynthesis of terpenoids and steroids](#) [Carbon fixation in photosynthetic organisms](#)
- [Citrate cycle \(TCA cycle\)](#) [Glyoxylate and dicarboxylate metabolism](#) [Metabolic pathways](#)
- [Pyruvate metabolism](#) [Reductive carboxylate cycle \(CO2 fixation\)](#)

Related Disease

[Drug Toxicity](#) [Edema](#) [Hypercholesterolemia](#)