



SZABO SCANDIC

Part of Europa Biosite

Produktinformation



Forschungsprodukte & Biochemikalien



Zellkultur & Verbrauchsmaterial



Diagnostik & molekulare Diagnostik



Laborgeräte & Service

Weitere Information auf den folgenden Seiten!
See the following pages for more information!



Lieferung & Zahlungsart

siehe unsere [Liefer- und Versandbedingungen](#)

Zuschläge

- Mindermengenzuschlag
- Trockeneiszuschlag
- Gefahrgutzuschlag
- Expressversand

SZABO-SCANDIC HandelsgmbH

Quellenstraße 110, A-1100 Wien

T. +43(0)1 489 3961-0

F. +43(0)1 489 3961-7

mail@szabo-scandic.com

www.szabo-scandic.com

[linkedin.com/company/szaboscandic](https://www.linkedin.com/company/szaboscandic) 

MDH1 monoclonal antibody (M03), clone 1D2

Catalog # : H00004190-M03

規格 : [100 ug]

[List All](#)

Specification

Product Description: Mouse monoclonal antibody raised against a partial recombinant MDH1.

Immunogen: MDH1 (AAH01484.1, 101 a.a. ~ 193 a.a) partial recombinant protein with GST tag. MW of the GST tag alone is 26 KDa.

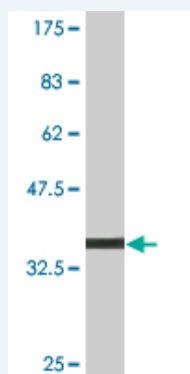
Sequence: LLKANVKIFKSQGAALDKYAKKSVKVVVGNPANTNCLTASKSAPSIPKEN
FSCLTRLDHNRKAQIALKLGVTANDVKNVIWGNHSSTQYP

Host: Mouse

Reactivity: Human

Isotype: IgG2a Kappa

Quality Control Testing: Antibody Reactive Against Recombinant Protein.



Western Blot detection against Immunogen (35.86 KDa) .

Storage Buffer: In 1x PBS, pH 7.4

Storage Instruction: Store at -20°C or lower. Aliquot to avoid repeated freezing and thawing.

MSDS: [Download](#)

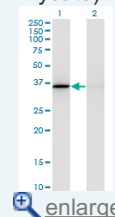
Datasheet: [Download](#)

Applications

Western Blot (Transfected lysate)

Application Image

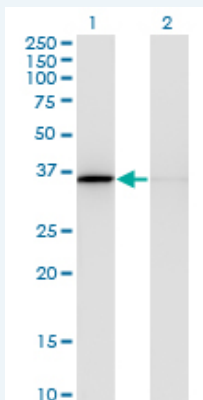
Western Blot (Transfected lysate)



[enlarge](#)

Western Blot (Recombinant protein)

ELISA



Western Blot analysis of MDH1 expression in transfected 293T cell line by MDH1 monoclonal antibody (M03), clone 1D2.

Lane 1: MDH1 transfected lysate(36.4 KDa).
Lane 2: Non-transfected lysate.

 [Protocol Download](#)

Western Blot (Recombinant protein)

 [Protocol Download](#)

ELISA

Gene Information

Entrez GeneID: [4190](#)

GeneBank [BC001484](#)
Accession#:

Protein [AAH01484.1](#)
Accession#:

Gene Name: MDH1

Gene Alias: MDH-s,MDHA,MGC:1375,MOR2

Gene Description: malate dehydrogenase 1, NAD (soluble)

Omim ID: [154200](#)

Gene Ontology: [Hyperlink](#)

Gene Summary: Malate dehydrogenase catalyzes the reversible oxidation of malate to oxaloacetate, utilizing the NAD/NADH cofactor system in the citric acid cycle. The protein encoded by this gene is localized to the cytoplasm and may play pivotal roles in the malate-aspartate shuttle that operates in the metabolic coordination between cytosol and mitochondria.
[provided by RefSeq]

Other Designations: cytosolic malate dehydrogenase,soluble malate dehydrogenase

Gene Pathway

[Biosynthesis of alkaloids derived from histidine and purine](#)
[Biosynthesis of alkaloids derived from ornithine, lysine and nicotinic acid](#)
[Biosynthesis of alkaloids derived from shikimate pathway](#)
[Biosynthesis of alkaloids derived from terpenoid and polyketide](#)
[Biosynthesis of phenylpropanoids](#) [Biosynthesis of plant hormones](#)
[Biosynthesis of terpenoids and steroids](#) [Carbon fixation in photosynthetic organisms](#)
[Citrate cycle \(TCA cycle\)](#) [Glyoxylate and dicarboxylate metabolism](#) [Metabolic pathways](#)
[Pyruvate metabolism](#) [Reductive carboxylate cycle \(CO2 fixation\)](#)

Related Disease

[Drug Toxicity](#) [Edema](#) [Hypercholesterolemia](#)

[服務條款](#) | [隱私權政策](#) | [著作及商標](#) | [網站地圖](#)

©2016 亞諾法生技股份有限公司 Abnova Corporation. 版權所有.