



SZABO SCANDIC

Part of Europa Biosite

Produktinformation



Forschungsprodukte & Biochemikalien



Zellkultur & Verbrauchsmaterial



Diagnostik & molekulare Diagnostik



Laborgeräte & Service

Weitere Information auf den folgenden Seiten!
See the following pages for more information!



Lieferung & Zahlungsart

siehe unsere [Liefer- und Versandbedingungen](#)

Zuschläge

- Mindermengenzuschlag
- Trockeneiszuschlag
- Gefahrgutzuschlag
- Expressversand

SZABO-SCANDIC HandelsgmbH

Quellenstraße 110, A-1100 Wien

T. +43(0)1 489 3961-0

F. +43(0)1 489 3961-7

mail@szabo-scandic.com

www.szabo-scandic.com

[linkedin.com/company/szaboscandic](https://www.linkedin.com/company/szaboscandic) 

MDH2 monoclonal antibody (M01), clone 1G12

Catalog # : H00004191-M01

規格 : [100 ug]

List All

Specification

Product Description: Mouse monoclonal antibody raised against a partial recombinant MDH2.

Immunogen: MDH2 (NP_005909, 134 a.a. ~ 246 a.a) partial recombinant protein with GST tag. MW of the GST tag alone is 26 KDa.

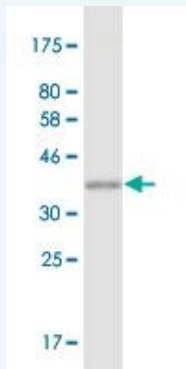
Sequence: EAMICVIANPVNSTIPITAEVFKKHGVYNPKNKIFGVTTLDIVRANTFVAELKGLDPARVN/PVIGGHAGKTIIP LISQCTPKVDFPQDQLTALTGRIQEAGTEVVKAKAGAGS

Host: Mouse

Reactivity: Human

Isotype: IgG2a Kappa

Quality Control Testing: Antibody Reactive Against Recombinant Protein.



Western Blot detection against Immunogen (38.17 KDa) .

Storage Buffer: In 1x PBS, pH 7.4

Storage Instruction: Store at -20°C or lower. Aliquot to avoid repeated freezing and thawing.

MSDS: [Download](#)

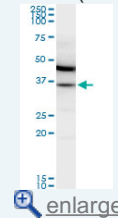
Datasheet: [Download](#)

Applications

Western Blot (Cell lysate)

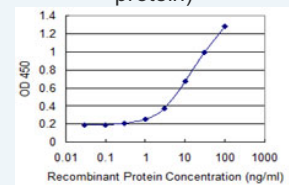
Application Image

Western Blot (Cell lysate)

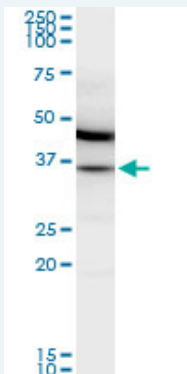


Western Blot (Recombinant protein)

Sandwich ELISA (Recombinant protein)



ELISA



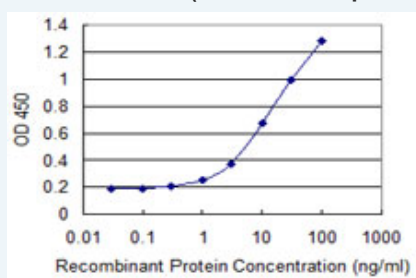
MDH2 monoclonal antibody (M01), clone 1G12. Western Blot analysis of MDH2 expression in IMR-32(Cat # L008V1).

[Protocol Download](#)

Western Blot (Recombinant protein)

[Protocol Download](#)

Sandwich ELISA (Recombinant protein)



Detection limit for recombinant GST tagged MDH2 is 0.3 ng/ml as a capture antibody.

[Protocol Download](#)

ELISA

Gene Information

Entrez GeneID: [4191](#)

GeneBank [NM_005918](#)

Accession#:

Protein [NP_005909](#)

Accession#:

Gene Name: MDH2

Gene Alias: M-MDH,MDH,MGC:3559,MOR1

Gene Description: malate dehydrogenase 2, NAD (mitochondrial)

Description:

Omim ID: [154100](#)

Gene Ontology: [Hyperlink](#)

Gene Summary: Malate dehydrogenase catalyzes the reversible oxidation of malate to oxaloacetate, utilizing the NAD/NADH cofactor system in the citric acid cycle. The protein encoded by this gene is localized to the mitochondria and may play pivotal roles in the malate-aspartate shuttle that operates in the metabolic coordination between cytosol and mitochondria. [provided by RefSeq]

Other Designations: mitochondrial malate dehydrogenase

Designations:

Gene Pathway

[Biosynthesis of alkaloids derived from histidine and purine](#)

[Biosynthesis of alkaloids derived from ornithine, lysine and nicotinic acid](#)

[Biosynthesis of alkaloids derived from shikimate pathway](#)

[Biosynthesis of alkaloids derived from terpenoid and polyketide](#)

[Biosynthesis of phenylpropanoids](#) [Biosynthesis of plant hormones](#)

[Biosynthesis of terpenoids and steroids](#) [Carbon fixation in photosynthetic organisms](#)

[Citrate cycle \(TCA cycle\)](#) [Glyoxylate and dicarboxylate metabolism](#) [Metabolic pathways](#)

[Pyruvate metabolism](#) [Reductive carboxylate cycle \(CO2 fixation\)](#)

Related Disease

[Tobacco Use Disorder](#)

[服務條款](#) | [隱私權政策](#) | [著作及商標](#) | [網站地圖](#)

©2016 亞諾法生技股份有限公司 Abnova Corporation. 版權所有.