



SZABO SCANDIC

Part of Europa Biosite

Produktinformation



Forschungsprodukte & Biochemikalien



Zellkultur & Verbrauchsmaterial



Diagnostik & molekulare Diagnostik



Laborgeräte & Service

Weitere Information auf den folgenden Seiten!
See the following pages for more information!



Lieferung & Zahlungsart

siehe unsere [Liefer- und Versandbedingungen](#)

Zuschläge

- Mindermengenzuschlag
- Trockeneiszuschlag
- Gefahrgutzuschlag
- Expressversand

SZABO-SCANDIC HandelsgmbH

Quellenstraße 110, A-1100 Wien

T. +43(0)1 489 3961-0

F. +43(0)1 489 3961-7

mail@szabo-scandic.com

www.szabo-scandic.com

[linkedin.com/company/szaboscandic](https://www.linkedin.com/company/szaboscandic) 

MDH2 monoclonal antibody (M06), clone 2A7

Catalog # : H00004191-M06

規格 : [100 ug]

[List All](#)

Specification

Product Description: Mouse monoclonal antibody raised against a partial recombinant MDH2.

Immunogen: MDH2 (NP_005909, 134 a.a. ~ 246 a.a) partial recombinant protein with GST tag. MW of the GST tag alone is 26 KDa.

Sequence: EAMICVIANPVSNTIPITAEVFKKHGVYNPKNKIFGVTTLDIVRANTFVAELKG
LDPARVNVPIVGGHAGKTIIPILISQCTPKVDFPQDQLTALTGRIQEAGTEV
VKAKAGAGS

Host: Mouse

Reactivity: Human

Isotype: IgG2a Kappa

Quality Control Testing: Antibody Reactive Against Recombinant Protein.

Storage Buffer: In 1x PBS, pH 7.4

Storage Instruction: Store at -20°C or lower. Aliquot to avoid repeated freezing and thawing.

MSDS:  [Download](#)

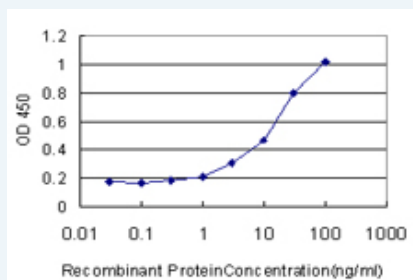
Datasheet:  [Download](#)

Publication Reference


1. [Metabolomics-driven approach for the improvement of Chinese hamster ovary cell growth: overexpression of malate dehydrogenase II.](#)
Chong WP, Reddy SG, Yusufi FN, Lee DY, Wong NS, Heng CK, Yap MG, Ho YS.J
Biotechnol. 2010 Apr 2. [Epub ahead of print]

Applications

Sandwich ELISA (Recombinant protein)



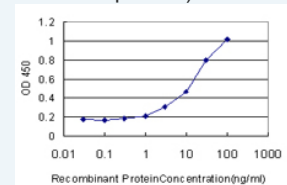
Detection limit for recombinant GST tagged MDH2 is approximately 1ng/ml as a capture antibody.


 [Protocol Download](#)

ELISA

Application Image

Sandwich ELISA (Recombinant protein)



 [enlarge](#)

ELISA

Gene Information

Entrez GeneID: [4191](#)

GeneBank
Accession#: [NM_005918](#)

Protein
Accession#: [NP_005909](#)

Gene Name: MDH2

Gene Alias: M-MDH,MDH,MGC:3559,MOR1

Gene
Description: malate dehydrogenase 2, NAD (mitochondrial)

Omim ID: [154100](#)

Gene Ontology: [Hyperlink](#)

Gene Summary: Malate dehydrogenase catalyzes the reversible oxidation of malate to oxaloacetate, utilizing the NAD/NADH cofactor system in the citric acid cycle. The protein encoded by this gene is localized to the mitochondria and may play pivotal roles in the malate-aspartate shuttle that operates in the metabolic coordination between cytosol and mitochondria.
[provided by RefSeq]

Other
Designations: mitochondrial malate dehydrogenase

Gene Pathway

[Biosynthesis of alkaloids derived from histidine and purine](#)
[Biosynthesis of alkaloids derived from ornithine, lysine and nicotinic acid](#)
[Biosynthesis of alkaloids derived from shikimate pathway](#)
[Biosynthesis of alkaloids derived from terpenoid and polyketide](#)
[Biosynthesis of phenylpropanoids](#) [Biosynthesis of plant hormones](#)
[Biosynthesis of terpenoids and steroids](#) [Carbon fixation in photosynthetic organisms](#)
[Citrate cycle \(TCA cycle\)](#) [Glyoxylate and dicarboxylate metabolism](#) [Metabolic pathways](#)
[Pyruvate metabolism](#) [Reductive carboxylate cycle \(CO2 fixation\)](#)

Related Disease

[Tobacco Use Disorder](#)

[服務條款](#) | [隱私權政策](#) | [著作及商標](#) | [網站地圖](#)

©2016 亞諾法生技股份有限公司 Abnova Corporation. 版權所有.