



SZABO SCANDIC

Part of Europa Biosite

Produktinformation



Forschungsprodukte & Biochemikalien



Zellkultur & Verbrauchsmaterial



Diagnostik & molekulare Diagnostik



Laborgeräte & Service

Weitere Information auf den folgenden Seiten!
See the following pages for more information!



Lieferung & Zahlungsart

siehe unsere [Liefer- und Versandbedingungen](#)

Zuschläge

- Mindermengenzuschlag
- Trockeneiszuschlag
- Gefahrgutzuschlag
- Expressversand

SZABO-SCANDIC HandelsgmbH

Quellenstraße 110, A-1100 Wien

T. +43(0)1 489 3961-0

F. +43(0)1 489 3961-7

mail@szabo-scandic.com

www.szabo-scandic.com

[linkedin.com/company/szaboscandic](https://www.linkedin.com/company/szaboscandic) 

ME1 293T Cell Transient Overexpression Lysate(Denatured)

Catalog # : H00004199-T01

規格 : [100 uL]

[List All](#)

Specification

Transfected Cell Line: 293T

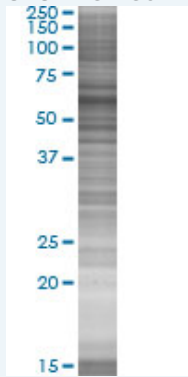
Plasmid: pCMV-ME1 full-length

Host: Human

Theoretical MW (kDa): 64.1

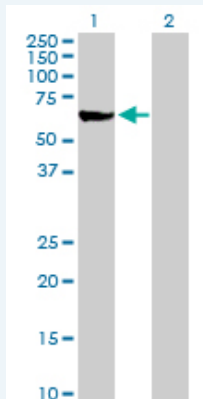
Quality Control Testing: Transient overexpression cell lysate was tested with Anti-ME1 antibody (H00004199-D01P) by Western Blots.

SDS-PAGE Gel



ME1 transfected lysate.

Western Blot



Lane 1: ME1 transfected lysate (64.10 KDa)

Lane 2: Non-transfected lysate.

Storage Buffer: 1X Sample Buffer (50 mM Tris-HCl, 2% SDS, 10% glycerol, 300 mM 2-mercaptoethanol, 0.01% Bromophenol blue)

Storage Instruction: Store at -80°C. Aliquot to avoid repeated freezing and thawing.

MSDS:  [Download](#)

Applications

Western Blot

Gene Information

Entrez GeneID: [4199](#)

GeneBank [NM_002395.3](#)
Accession#:

Protein [NP_002386.1](#)
Accession#:

Gene Name: ME1

Gene Alias: HUMNDME,MES

Gene Description: malic enzyme 1, NADP(+)-dependent, cytosolic

Omim ID: [154250](#)

Gene Ontology: [Hyperlink](#)

Gene Summary: This gene encodes a cytosolic, NADP-dependent enzyme that generates NADPH for fatty acid biosynthesis. The activity of this enzyme, the reversible oxidative decarboxylation of malate, links the glycolytic and citric acid cycles. The regulation of expression for this gene is complex. Increased expression can result from elevated levels of thyroid hormones or by higher proportions of carbohydrates in the diet. [provided by RefSeq]

Other Designations: Malic enzyme, cytoplasmic, NADP-dependent malic enzyme, OTTHUMP00000016792, cytosolic malic enzyme 1, malate dehydrogenase, malic enzyme 1, soluble, pyruvic-malic carboxylase

Gene Pathway

[Biosynthesis of alkaloids derived from histidine and purine](#)

[Biosynthesis of alkaloids derived from ornithine, lysine and nicotinic acid](#)

[Biosynthesis of alkaloids derived from shikimate pathway](#)

[Biosynthesis of alkaloids derived from terpenoid and polyketide](#)

[Biosynthesis of terpenoids and steroids](#) [Carbon fixation in photosynthetic organisms](#)

[Metabolic pathways](#) [PPAR signaling pathway](#) [Pyruvate metabolism](#)

Related Disease

[Lung Neoplasms](#)