



# SZABO SCANDIC

Part of Europa Biosite

## Produktinformation



Forschungsprodukte & Biochemikalien



Zellkultur & Verbrauchsmaterial



Diagnostik & molekulare Diagnostik



Laborgeräte & Service

Weitere Information auf den folgenden Seiten!  
See the following pages for more information!



### Lieferung & Zahlungsart

siehe unsere [Liefer- und Versandbedingungen](#)

### Zuschläge

- Mindermengenzuschlag
- Trockeneiszuschlag
- Gefahrgutzuschlag
- Expressversand

### SZABO-SCANDIC HandelsgmbH

Quellenstraße 110, A-1100 Wien

T. +43(0)1 489 3961-0

F. +43(0)1 489 3961-7

[mail@szabo-scandic.com](mailto:mail@szabo-scandic.com)

[www.szabo-scandic.com](http://www.szabo-scandic.com)

[linkedin.com/company/szaboscandic](https://www.linkedin.com/company/szaboscandic) 

## MECP2 monoclonal antibody (M01), clone 4B6

Catalog # : H00004204-M01

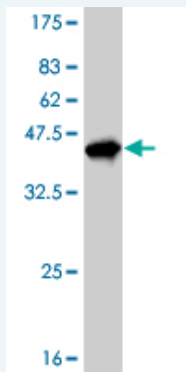
規格 : [ 100 ug ]

[List All](#)

### Specification

<b>Product Description:</b>	Mouse monoclonal antibody raised against a partial recombinant MECP2.
<b>Immunogen:</b>	MECP2 (AAH11612, 81 a.a. ~ 170 a.a) partial recombinant protein with GST tag. MW of the GST tag alone is 26 KDa.
<b>Sequence:</b>	PKQRRSIIRDGRGPMYDDPTLPEGWTRKCLKQRKSGRSAGKYDVYLINPQG KAFRSKVELIAYFEKVGDTSLDPNDFDFTVTGRGSPSRREQ
<b>Host:</b>	Mouse
<b>Reactivity:</b>	Human, Mouse, Rat
<b>Isotype:</b>	IgG2a Kappa

**Quality Control Testing:** Antibody Reactive Against Recombinant Protein.



Western Blot detection against Immunogen (35.53 KDa) .

**Storage Buffer:** In 1x PBS, pH 7.4

**Storage Instruction:** Store at -20°C or lower. Aliquot to avoid repeated freezing and thawing.

**MSDS:** [Download](#)

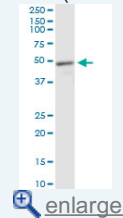
**Datasheet:** [Download](#)

### Applications

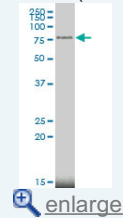
Western Blot (Tissue lysate)

### Application Image

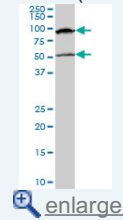
Western Blot (Tissue lysate)



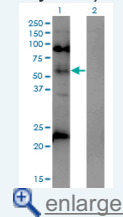
Western Blot (Cell lysate)



Western Blot (Cell lysate)

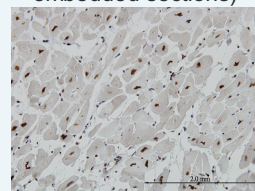


Western Blot (Transfected lysate)

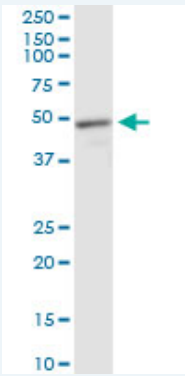


Western Blot (Recombinant protein)

Immunohistochemistry  
(Formalin/PFA-fixed paraffin-embedded sections)

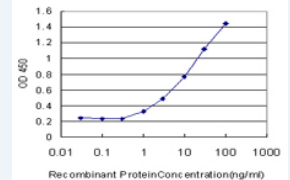



Sandwich ELISA (Recombinant protein)



MECP2 monoclonal antibody (M01), clone 4B6. Western Blot analysis of MECP2 expression in rat muscle.

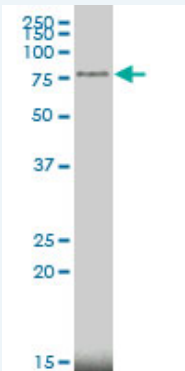
 [Protocol Download](#)



 [enlarge](#)

ELISA

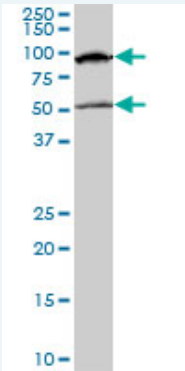
#### Western Blot (Cell lysate)



MECP2 monoclonal antibody (M01), clone 4B6 Western Blot analysis of MECP2 expression in MCF-7 ( Cat # L046V1 ).

 [Protocol Download](#)

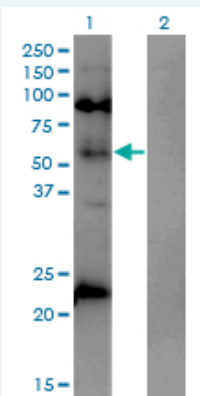
#### Western Blot (Cell lysate)



MECP2 monoclonal antibody (M01), clone 4B6. Western Blot analysis of MECP2 expression in NIH/3T3 ( Cat # L018V1 ).

 [Protocol Download](#)

#### Western Blot (Transfected lysate)



Western Blot analysis of MECP2 expression in transfected 293T cell line by MECP2 monoclonal antibody (M01), clone 4B6.

Lane 1: MECP2 transfected lysate(52.4 KDa).  
Lane 2: Non-transfected lysate.

 [Protocol Download](#)

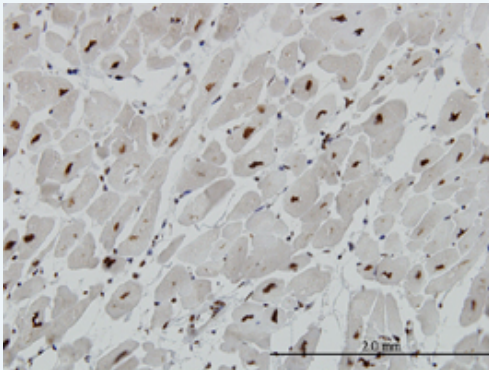
---

### Western Blot (Recombinant protein)

 [Protocol Download](#)

---

### Immunohistochemistry (Formalin/PFA-fixed paraffin-embedded sections)



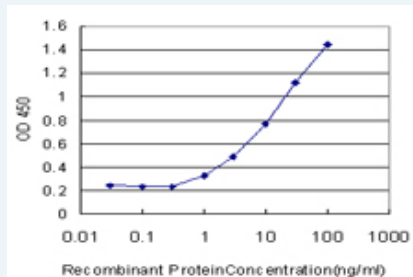
 [enlarge this image](#)

Immunoperoxidase of monoclonal antibody to MECP2 on formalin-fixed paraffin-embedded human heart. [antibody concentration 3 ug/ml]

 [Protocol Download](#)

---

### Sandwich ELISA (Recombinant protein)



Detection limit for recombinant GST tagged MECP2 is approximately 1ng/ml as a capture antibody.

 [Protocol Download](#)

---

### ELISA

---

#### Gene Information

Entrez GeneID: [4204](#)

GeneBank [BC011612](#)

Accession#:

Protein [AAH11612](#)

Accession#:

Gene Name: MECP2

Gene Alias: AUTSX3, DKFZp686A24160, MRX16, MRX79, MRXS13, MRXSL, PPMX, RTS, RTT

Gene Description: methyl CpG binding protein 2 (Rett syndrome)

Omim ID: [105830](#), [300005](#), [300055](#), [300260](#), [300496](#), [300673](#), [312750](#)

Gene Ontology: [Hyperlink](#)

Gene Summary: DNA methylation is the major modification of eukaryotic genomes and plays an essential role in mammalian development. Human proteins

MECP2, MBD1, MBD2, MBD3, and MBD4 comprise a family of nuclear proteins related by the presence in each of a methyl-CpG binding domain (MBD). Each of these proteins, with the exception of MBD3, is capable of binding specifically to methylated DNA. MECP2, MBD1 and MBD2 can also repress transcription from methylated gene promoters. In contrast to other MBD family members, MECP2 is X-linked and subject to X inactivation. MECP2 is dispensible in stem cells, but is essential for embryonic development. MECP2 gene mutations are the cause of most cases of Rett syndrome, a progressive neurologic developmental disorder and one of the most common causes of mental retardation in females. [provided by RefSeq]

---

**Other Designations:** OTTHUMP00000026021,methyl CpG binding protein 2

---

#### **Related Disease**

---

[Alzheimer disease](#) [Angelman Syndrome](#) [Angelman syndrome](#)  
[Attention Deficit Disorder with Hyperactivity](#) [Autistic Disorder](#) [Brain Diseases](#)  
[Cardiovascular Diseases](#) [Child Development Disorders](#) [Pervasive](#)  
[Chromosome Aberrations](#) [Cognition Disorders](#) [Developmental Disabilities](#)  
[Diabetes Mellitus, Type 2](#) [Disease Progression](#) [Edema](#) [Epilepsy](#) [Epilepsy](#) [Fractures, Bone](#)  
[Fragile X Syndrome](#) [Fragile X syndrome](#)

... see more

---

[服務條款](#) | [隱私權政策](#) | [著作及商標](#) | [網站地圖](#)

©2016 亞諾法生技股份有限公司 Abnova Corporation. 版權所有.