



# SZABO SCANDIC

Part of Europa Biosite

## Produktinformation



Forschungsprodukte & Biochemikalien



Zellkultur & Verbrauchsmaterial



Diagnostik & molekulare Diagnostik



Laborgeräte & Service

Weitere Information auf den folgenden Seiten!  
See the following pages for more information!



### Lieferung & Zahlungsart

siehe unsere [Liefer- und Versandbedingungen](#)

### Zuschläge

- Mindermengenzuschlag
- Trockeneiszuschlag
- Gefahrgutzuschlag
- Expressversand

### SZABO-SCANDIC HandelsgmbH

Quellenstraße 110, A-1100 Wien

T. +43(0)1 489 3961-0

F. +43(0)1 489 3961-7

[mail@szabo-scandic.com](mailto:mail@szabo-scandic.com)

[www.szabo-scandic.com](http://www.szabo-scandic.com)

[linkedin.com/company/szaboscandic](https://www.linkedin.com/company/szaboscandic) 

## MECP2 monoclonal antibody (M03), clone 1B11

Catalog # : H00004204-M03

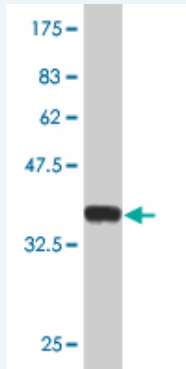
規格 : [ 100 ug ]

[List All](#)

### Specification

<b>Product Description:</b>	Mouse monoclonal antibody raised against a partial recombinant MECP2.
<b>Immunogen:</b>	MECP2 (AAH11612, 81 a.a. ~ 170 a.a) partial recombinant protein with GST tag. MW of the GST tag alone is 26 KDa.
<b>Sequence:</b>	PKQRRSIIRDGRGPMYDDPTLPEGWTRKLGQRKSGRSAGKYDVYLINPQG KAFRSKVELIAYFEKVGDTSLDPNDFDFTVTGRGSPSRREQ
<b>Host:</b>	Mouse
<b>Reactivity:</b>	Human
<b>Isotype:</b>	IgG2a Kappa

**Quality Control Testing:** Antibody Reactive Against Recombinant Protein.



Western Blot detection against Immunogen (35.53 KDa) .

**Storage Buffer:** In 1x PBS, pH 7.4

**Storage Instruction:** Store at -20°C or lower. Aliquot to avoid repeated freezing and thawing.

**MSDS:** [Download](#)

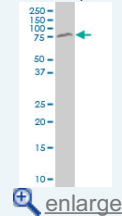
**Datasheet:** [Download](#)

### Applications

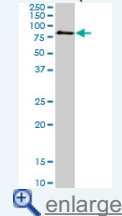
Western Blot (Cell lysate)

### Application Image

Western Blot (Cell lysate)

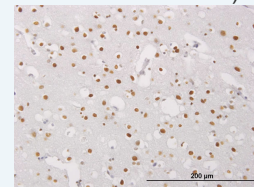


Western Blot (Cell lysate)



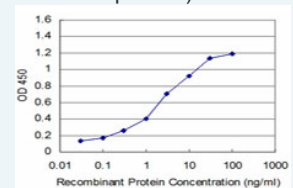
Western Blot (Recombinant protein)

Immunohistochemistry (Formalin/PFA-fixed paraffin-embedded sections)



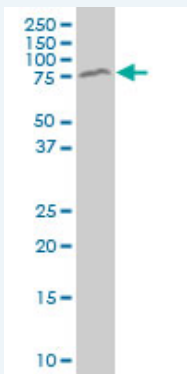
[enlarge](#)

Sandwich ELISA (Recombinant protein)



[enlarge](#)

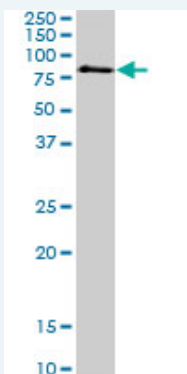
ELISA



MECP2 monoclonal antibody (M03), clone 1B11 Western Blot analysis of MECP2 expression in HeLa S3 NE ( Cat # L013V3 ).

[Protocol Download](#)

#### Western Blot (Cell lysate)



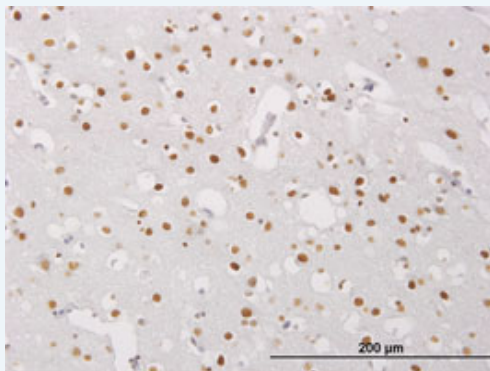
MECP2 monoclonal antibody (M03), clone 1B11. Western Blot analysis of MECP2 expression in Jurkat ( Cat # L017V1 ).

[Protocol Download](#)

#### Western Blot (Recombinant protein)

[Protocol Download](#)

#### Immunohistochemistry (Formalin/PFA-fixed paraffin-embedded sections)

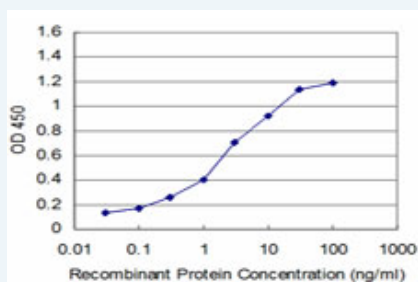


[enlarge this image](#)

Immunoperoxidase of monoclonal antibody to MECP2 on formalin-fixed paraffin-embedded human cerebral cortex. [antibody concentration 3 ug/ml]

[Protocol Download](#)

#### Sandwich ELISA (Recombinant protein)



Detection limit for recombinant GST tagged MECP2 is approximately 0.1ng/ml as a capture antibody.

## ELISA

### Gene Information

**Entrez GeneID:** [4204](#)

**GeneBank Accession#:** [BC011612](#)

**Protein Accession#:** [AAH11612](#)

**Gene Name:** MECP2

**Gene Alias:** AUTSX3,DKFZp686A24160,MRX16,MRX79,MRXS13,MRXSL,PPMX,RTS,RTT

**Gene Description:** methyl CpG binding protein 2 (Rett syndrome)

**Omim ID:** [105830](#), [300005](#), [300055](#), [300260](#), [300496](#), [300673](#), [312750](#)

**Gene Ontology:** [Hyperlink](#)

**Gene Summary:** DNA methylation is the major modification of eukaryotic genomes and plays an essential role in mammalian development. Human proteins MECP2, MBD1, MBD2, MBD3, and MBD4 comprise a family of nuclear proteins related by the presence in each of a methyl-CpG binding domain (MBD). Each of these proteins, with the exception of MBD3, is capable of binding specifically to methylated DNA. MECP2, MBD1 and MBD2 can also repress transcription from methylated gene promoters. In contrast to other MBD family members, MECP2 is X-linked and subject to X inactivation. MECP2 is dispensible in stem cells, but is essential for embryonic development. MECP2 gene mutations are the cause of most cases of Rett syndrome, a progressive neurologic developmental disorder and one of the most common causes of mental retardation in females. [provided by RefSeq]

**Other Designations:** OTTHUMP00000026021,methyl CpG binding protein 2

### Related Disease

[Alzheimer disease](#) [Angelman Syndrome](#) [Angelman syndrome](#)  
[Attention Deficit Disorder with Hyperactivity](#) [Autistic Disorder](#) [Brain Diseases](#)  
[Cardiovascular Diseases](#) [Child Development Disorders](#), [Pervasive](#)  
[Chromosome Aberrations](#) [Cognition Disorders](#) [Developmental Disabilities](#)  
[Diabetes Mellitus, Type 2](#) [Disease Progression](#) [Edema](#) [Epilepsy](#) [Epilepsy](#) [Fractures, Bone](#)  
[Fragile X Syndrome](#) [Fragile X syndrome](#)

... see more