



# SZABO SCANDIC

Part of Europa Biosite

## Produktinformation



Forschungsprodukte & Biochemikalien



Zellkultur & Verbrauchsmaterial



Diagnostik & molekulare Diagnostik



Laborgeräte & Service

Weitere Information auf den folgenden Seiten!  
See the following pages for more information!



### Lieferung & Zahlungsart

siehe unsere [Liefer- und Versandbedingungen](#)

### Zuschläge

- Mindermengenzuschlag
- Trockeneiszuschlag
- Gefahrgutzuschlag
- Expressversand

### SZABO-SCANDIC HandelsgmbH

Quellenstraße 110, A-1100 Wien

T. +43(0)1 489 3961-0

F. +43(0)1 489 3961-7

[mail@szabo-scandic.com](mailto:mail@szabo-scandic.com)

[www.szabo-scandic.com](http://www.szabo-scandic.com)

[linkedin.com/company/szaboscandic](https://www.linkedin.com/company/szaboscandic) 

## MEF2A monoclonal antibody (M15), clone 1C8

Catalog # : H00004205-M15

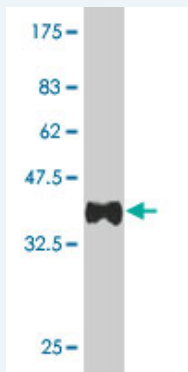
規格 : [ 100 ug ]

[List All](#)

### Specification

<b>Product Description:</b>	Mouse monoclonal antibody raised against a partial recombinant MEF2A.
<b>Immunogen:</b>	MEF2A (AAH13437, 71 a.a. ~ 170 a.a) partial recombinant protein with GST tag. MW of the GST tag alone is 26 KDa.
<b>Sequence:</b>	EYNEPHERSTNSDIVEALNKKEHRGCDSPDPDTSYVLTPHTEEKYKKINE EFDNMMRNHKKIAPGLPPQNFMSVTVPVTPNALSYTNPSSLVSPSLAA
<b>Host:</b>	Mouse
<b>Reactivity:</b>	Human
<b>Isotype:</b>	IgG2a Kappa

**Quality Control Testing:** Antibody Reactive Against Recombinant Protein.



Western Blot detection against Immunogen (37 KDa) .

**Storage Buffer:** In 1x PBS, pH 7.4

**Storage Instruction:** Store at -20°C or lower. Aliquot to avoid repeated freezing and thawing.

**MSDS:** [Download](#)

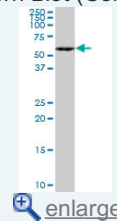
**Datasheet:** [Download](#)

### Applications

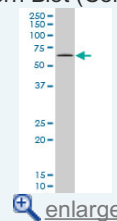
**Western Blot (Cell lysate)**

### Application Image

Western Blot (Cell lysate)

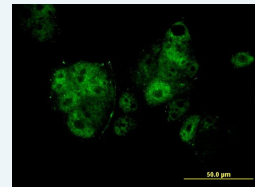


Western Blot (Cell lysate)

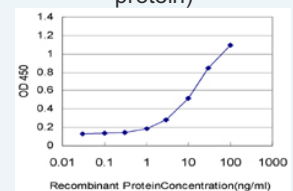


Western Blot (Recombinant protein)

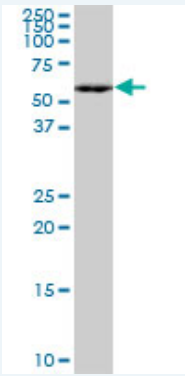
Immunofluorescence



Sandwich ELISA (Recombinant protein)



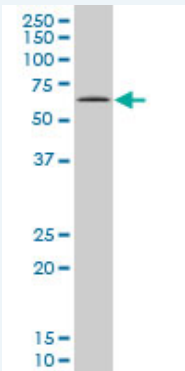
ELISA



MEF2A monoclonal antibody (M15), clone 1C8. Western Blot analysis of MEF2A expression in HepG2 ( Cat # L019V1 ).

[Protocol Download](#)

#### Western Blot (Cell lysate)



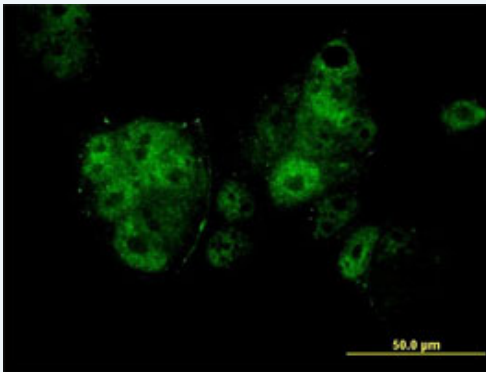
MEF2A monoclonal antibody (M15), clone 1C8 Western Blot analysis of MEF2A expression in MCF-7 ( Cat # L046V1 ).

[Protocol Download](#)

#### Western Blot (Recombinant protein)

[Protocol Download](#)

#### Immunofluorescence

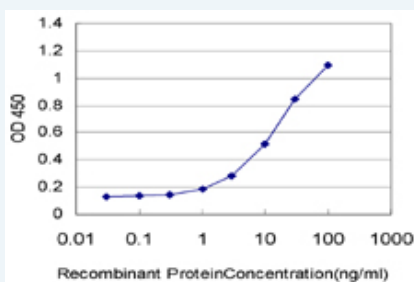


[enlarge this image](#)

Immunofluorescence of monoclonal antibody to MEF2A on MCF-7 cell . [antibody concentration 10 ug/ml]

[Protocol Download](#)

#### Sandwich ELISA (Recombinant protein)



Detection limit for recombinant GST tagged MEF2A is approximately 0.3ng/ml as a capture antibody.

## ELISA

### Gene Information

**Entrez GeneID:** [4205](#)

**GeneBank Accession#:** [BC013437](#)

**Protein Accession#:** [AAH13437](#)

**Gene Name:** MEF2A

**Gene Alias:** ADCAD1,RSRFC4,RSRFC9

**Gene Description:** myocyte enhancer factor 2A

**Omim ID:** [600660](#), [608320](#)

**Gene Ontology:** [Hyperlink](#)

**Gene Summary:** The process of differentiation from mesodermal precursor cells to myoblasts has led to the discovery of a variety of tissue-specific factors that regulate muscle gene expression. The myogenic basic helix-loop-helix proteins, including myoD (MIM 159970), myogenin (MIM 159980), MYF5 (MIM 159990), and MRF4 (MIM 159991) are one class of identified factors. A second family of DNA binding regulatory proteins is the myocyte-specific enhancer factor-2 (MEF2) family. Each of these proteins binds to the MEF2 target DNA sequence present in the regulatory regions of many, if not all, muscle-specific genes. The MEF2 genes are members of the MADS gene family (named for the yeast mating type-specific transcription factor MCM1, the plant homeotic genes 'agamous' and 'deficiens' and the human serum response factor SRF (MIM 600589)), a family that also includes several homeotic genes and other transcription factors, all of which share a conserved DNA-binding domain.[supplied by OMIM]

**Other Designations:** MADS box transcription enhancer factor 2, polypeptide A (myocyte enhancer factor 2A)

### Related Disease

[Atherosclerosis](#) [Cardiomyopathy](#), [Hypertrophic Cardiovascular Diseases](#) [Coronary Artery Disease](#) [Diabetes Mellitus](#) [Diabetes Mellitus, Type 2](#) [Edema](#) [Genetic Predisposition to Disease](#) [Hypertension](#) [Hypertrophy](#), [Left Ventricular](#) [Insulin Resistance](#) [Myocardial Infarction](#) [Myocardial Ischemia](#) [Polycystic Ovary Syndrome](#) [Tobacco Use Disorder](#)