



SZABO SCANDIC

Part of Europa Biosite

Produktinformation



Forschungsprodukte & Biochemikalien



Zellkultur & Verbrauchsmaterial



Diagnostik & molekulare Diagnostik



Laborgeräte & Service

Weitere Information auf den folgenden Seiten!
See the following pages for more information!



Lieferung & Zahlungsart

siehe unsere [Liefer- und Versandbedingungen](#)

Zuschläge

- Mindermengenzuschlag
- Trockeneiszuschlag
- Gefahrgutzuschlag
- Expressversand

SZABO-SCANDIC HandelsgmbH

Quellenstraße 110, A-1100 Wien

T. +43(0)1 489 3961-0

F. +43(0)1 489 3961-7

mail@szabo-scandic.com

www.szabo-scandic.com

[linkedin.com/company/szaboscandic](https://www.linkedin.com/company/szaboscandic) 

MEF2B monoclonal antibody (M24), clone 4B5

Catalog # : H00004207-M24

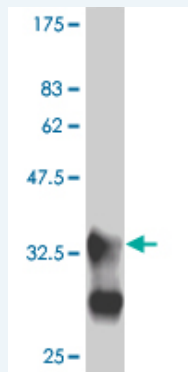
規格 : [100 ug]

List All

Specification

Product Description:	Mouse monoclonal antibody raised against a full length recombinant MEF2B.
Immunogen:	MEF2B (NP_005910.1, 165 a.a. ~ 235 a.a) full-length recombinant protein with GST tag. MW of the GST tag alone is 26 KDa.
Sequence:	SRPSPFRPAAPKAGPPGLVHPLFSPSHLTSKTPPPLYLPTEGRRSDLPG GLAGPRGGLNTSRSLYGLQNP
Host:	Mouse
Reactivity:	Human
Isotype:	IgG2a Kappa

Quality Control Testing: Antibody Reactive Against Recombinant Protein.



Western Blot detection against Immunogen (33.44 KDa) .

Storage Buffer: In 1x PBS, pH 7.4

Storage Instruction: Store at -20°C or lower. Aliquot to avoid repeated freezing and thawing.

MSDS: [Download](#)

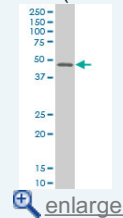
Datasheet: [Download](#)

Applications

Western Blot (Tissue lysate)

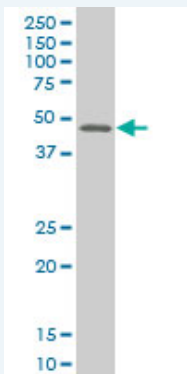
Application Image

Western Blot (Tissue lysate)



Western Blot (Recombinant protein)


ELISA



MEF2B monoclonal antibody (M24), clone 4B5. Western Blot analysis of MEF2B expression in human stomach.

 [Protocol Download](#)

Western Blot (Recombinant protein)

 [Protocol Download](#)

ELISA

Gene Information

Entrez GeneID: [4207](#)

GeneBank Accession#: [NM_005919](#)

Protein Accession#: [NP_005910.1](#)

Gene Name: MEF2B

Gene Alias: FLJ32599,FLJ46391,MGC189732,MGC189763,RSRFR2

Gene Description: myocyte enhancer factor 2B

Omim ID: [600661](#)

Gene Ontology: [Hyperlink](#)

Gene Summary: This gene represents numerous read-through transcripts that span geneID:729991 and 100271849. Many read-through transcripts are predicted to be nonsense-mediated decay (NMD) candidates, and are thought to be non-coding. Some transcripts are predicted to be capable of translation reinitiation at a downstream AUG, resulting in expression of at least one isoform of myocyte enhancer factor 2B (MEF2B) from this read-through locus. At least one additional MEF2B variant and isoform can be expressed from a downstream promoter, and is annotated on geneID:100271849. [provided by RefSeq]

Other Designations: MADS box transcription enhancer factor 2, polypeptide B (myocyte enhancer factor 2B)

Related Disease

[Cardiovascular Diseases](#) [Diabetes Mellitus, Type 2](#) [Edema](#) [Tobacco Use Disorder](#)