



SZABO SCANDIC

Part of Europa Biosite

Produktinformation



Forschungsprodukte & Biochemikalien



Zellkultur & Verbrauchsmaterial



Diagnostik & molekulare Diagnostik



Laborgeräte & Service

Weitere Information auf den folgenden Seiten!
See the following pages for more information!



Lieferung & Zahlungsart

siehe unsere [Liefer- und Versandbedingungen](#)

Zuschläge

- Mindermengenzuschlag
- Trockeneiszuschlag
- Gefahrgutzuschlag
- Expressversand

SZABO-SCANDIC HandelsgmbH

Quellenstraße 110, A-1100 Wien

T. +43(0)1 489 3961-0

F. +43(0)1 489 3961-7

mail@szabo-scandic.com

www.szabo-scandic.com

[linkedin.com/company/szaboscandic](https://www.linkedin.com/company/szaboscandic) 

MEF2C purified MaxPab rabbit polyclonal antibody (D01P) MaxPab®

Catalog # : H00004208-D01P

規格 : [100 ug]

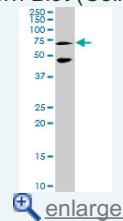
[List All](#)

Specification

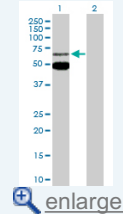
Product Description:	Rabbit polyclonal antibody raised against a full-length human MEF2C protein.
Immunogen:	MEF2C (AAH26341.1, 1 a.a. ~ 469 a.a) full-length human protein.
Sequence:	MGRKKIQITRIMDERNRQVTFTKRKFGLMKKAYELSVLCDCEIALIIFNSTN KLFQYASTDMDKVLKYTEYNEQHESTRNSDIVETLRKKGLNGCDSPDP DADDSVGHSPESSEDKYRKINEDIDLISRQRLCAVPPPNFEMPVSIPIVSSH NSLVYSNPVSSLGNPNLLPLAHPQLRNSMSPGVTHRPPSAGNTGGLMG GDLTSGAGTSAGNGYGNPRNSPGLLVSPGNLNKNMQAKSPPPMNLGM NNRKPDLRVLIPPGSKNTMPSVSEDVLDLLNQRINNSQSAQSLATPVVSV ATPTLPGQGMGGYPSAISTTYGTEYLSADLSSLGFNTASALHLGSV TGWQQQLHNMQPSALSQLGACTSTHLSQSSNLSLPSTQSLNIKSEPV PPRDRTTTPSRYPQHTRHEAGRSPVDSLSSCSSSYDGDSDREDHRNEFH SPIGLTRPSPDERESPSVKRMRLSE
Host:	Rabbit
Reactivity:	Human
Quality Control Testing:	Antibody reactive against mammalian transfected lysate.
Storage Buffer:	In 1x PBS, pH 7.4
Storage Instruction:	Store at -20°C or lower. Aliquot to avoid repeated freezing and thawing.
MSDS:	Download
Datasheet:	Download

Application Image

Western Blot (Cell lysate)

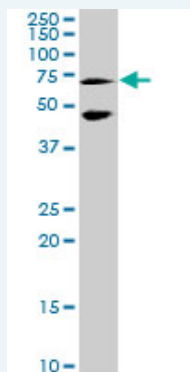


Western Blot (Transfected lysate)



Applications

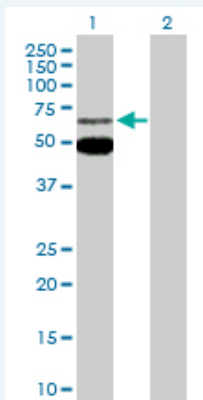
Western Blot (Cell lysate)



MEF2C MaxPab rabbit polyclonal antibody. Western Blot analysis of MEF2C expression in IMR-32.

[Protocol Download](#)

Western Blot (Transfected lysate)



Western Blot analysis of MEF2C expression in transfected 293T cell line ([H00004208-T01](#)) by MEF2C MaxPab polyclonal antibody.

Lane 1: MEF2C transfected lysate(50.90 KDa).
Lane 2: Non-transfected lysate.

 [Protocol Download](#)

Gene Information

Entrez GeneID: [4208](#)

GeneBank Accession#: [BC026341.1](#)

Protein Accession#: [AAH26341.1](#)

Gene Name: MEF2C

Gene Alias: -

Gene Description: myocyte enhancer factor 2C

Omim ID: [600662](#)

Gene Ontology: [Hyperlink](#)

Other Designations: MADS box transcription enhancer factor 2, polypeptide C (myocyte enhancer factor 2C)

Gene Pathway

[MAPK signaling pathway](#)

Related Disease

[Breast cancer](#) [Breast Neoplasms](#) [Cardiovascular Diseases](#) [Chromosome Deletion](#)
[Diabetes Mellitus, Type 2](#) [Disease Susceptibility](#) [Edema](#) [Fractures, Bone](#)
[Genetic Predisposition to Disease](#) [Mental Retardation Syndrome](#)