



SZABO SCANDIC

Part of Europa Biosite

Produktinformation



Forschungsprodukte & Biochemikalien



Zellkultur & Verbrauchsmaterial



Diagnostik & molekulare Diagnostik



Laborgeräte & Service

Weitere Information auf den folgenden Seiten!
See the following pages for more information!



Lieferung & Zahlungsart

siehe unsere [Liefer- und Versandbedingungen](#)

Zuschläge

- Mindermengenzuschlag
- Trockeneiszuschlag
- Gefahrgutzuschlag
- Expressversand

SZABO-SCANDIC HandelsgmbH

Quellenstraße 110, A-1100 Wien

T. +43(0)1 489 3961-0

F. +43(0)1 489 3961-7

mail@szabo-scandic.com

www.szabo-scandic.com

[linkedin.com/company/szaboscandic](https://www.linkedin.com/company/szaboscandic) 

MEF2C 293T Cell Transient Overexpression Lysate(Denatured)

Catalog # : H00004208-T02

規格 : [100 uL]

List All

Specification

Transfected Cell Line: 293T

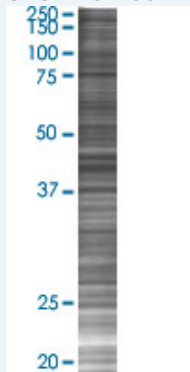
Plasmid: pCMV-MEF2C full-length

Host: Human

Theoretical MW (kDa): 50.9

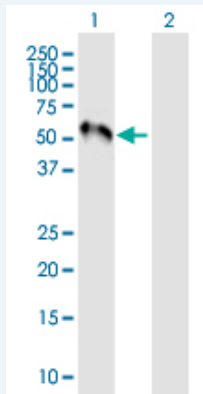
Quality Control Testing: Transient overexpression cell lysate was tested with Anti-MEF2C antibody ([H00004208-B02P](#)) by Western Blots.

SDS-PAGE Gel



MEF2C transfected lysate.

Western Blot



Lane 1: MEF2C transfected lysate (50.9 KDa)

Lane 2: Non-transfected lysate.

Storage Buffer: 1X Sample Buffer (50 mM Tris-HCl, 2% SDS, 10% glycerol, 300 mM 2-mercaptoethanol, 0.01% Bromophenol blue)

Storage Instruction: Store at -80°C. Aliquot to avoid repeated freezing and thawing.

MSDS:  [Download](#)

Applications

Application Image

Western Blot

Western Blot

Gene Information

Entrez GeneID: [4208](#)

GeneBank Accession#: [BC026341.1](#)

Protein Accession#: [AAH26341.1](#)

Gene Name: MEF2C

Gene Alias: -

Gene Description: myocyte enhancer factor 2C

Omim ID: [600662](#)

Gene Ontology: [Hyperlink](#)

Other Designations: MADS box transcription enhancer factor 2, polypeptide C (myocyte enhancer factor 2C)

Gene Pathway

[MAPK signaling pathway](#)

Related Disease

[Breast cancer](#) [Breast Neoplasms](#) [Cardiovascular Diseases](#) [Chromosome Deletion](#) [Diabetes Mellitus, Type 2](#) [Disease Susceptibility](#) [Edema](#) [Fractures, Bone](#) [Genetic Predisposition to Disease](#) [Mental Retardation Syndrome](#)

[服務條款](#) | [隱私權政策](#) | [著作及商標](#) | [網站地圖](#)

©2016 亞諾法生技股份有限公司 Abnova Corporation. 版權所有.