



SZABO SCANDIC

Part of Europa Biosite

Produktinformation



Forschungsprodukte & Biochemikalien



Zellkultur & Verbrauchsmaterial



Diagnostik & molekulare Diagnostik



Laborgeräte & Service

Weitere Information auf den folgenden Seiten!
See the following pages for more information!



Lieferung & Zahlungsart

siehe unsere [Liefer- und Versandbedingungen](#)

Zuschläge

- Mindermengenzuschlag
- Trockeneiszuschlag
- Gefahrgutzuschlag
- Expressversand

SZABO-SCANDIC HandelsgmbH

Quellenstraße 110, A-1100 Wien

T. +43(0)1 489 3961-0

F. +43(0)1 489 3961-7

mail@szabo-scandic.com

www.szabo-scandic.com

[linkedin.com/company/szaboscandic](https://www.linkedin.com/company/szaboscandic) 

MEF2D purified MaxPab mouse polyclonal antibody (B01P) MaxPab®

Catalog # : H00004209-B01P

規格 : [50 ug]

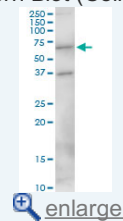
[List All](#)

Specification

Product Description:	Mouse polyclonal antibody raised against a full-length human MEF2D protein.
Immunogen:	MEF2D (NP_005911.1, 1 a.a. ~ 521 a.a) full-length human protein.
Sequence:	MGRKKIQIRITDERNRQVTFTKRKFGLMCKAYELSVLCDCEIALIIFNHSN KLFQYASTDMDKVLKYTEYNEPHESRTNADIETLRKKGFNGCDSPEPD GEDSLEQSPILLEDKYRRASEELDGLFRRYGSTVPAPNFAMPVTVPVSN QSSLQF SNPSGSLVTPSLVTSSLTDPRLSPQQPALQRNSVSPGLPQRP ASAGAMLGGDLNSANGACPSVGNQYVSARASPGLLPVANGNSLNKVIP AKSPPPPTHSTQLGAPSRKPDLRVITSQAGKGLMHHLTEDHLDLNNAGR LGVSQSTHSLTPVWVSATPSLLSQGLPFSSMPTAYNTDYQLTSAELSS LPAFSSPGGLSLGNVTAWQQPQQPQQPQQPQQPQQPQQPQQPQQPQP QQPQQPQQPQQSHLVPVSLSNLIPGSPLPHVGAALTVTTHPHISIKSE PVSPSRERSAPPFPAARPEPGDGLSSPAGGSYETGDRDDGRG DFGPTLGLLRPAPEPEAEAGSAVKRMRDLDTWTLK
Host:	Mouse
Reactivity:	Human
Quality Control Testing:	Antibody reactive against mammalian transfected lysate.
Storage Buffer:	In 1x PBS, pH 7.4
Storage Instruction:	Store at -20°C or lower. Aliquot to avoid repeated freezing and thawing.
MSDS:	Download
Datasheet:	Download

Application Image

Western Blot (Cell lysate)



Western Blot (Transfected lysate)

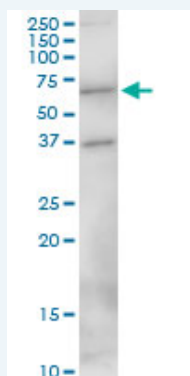


Immunofluorescence



Applications

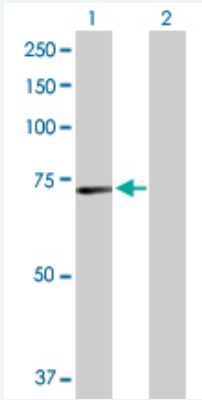
Western Blot (Cell lysate)



MEF2D MaxPab polyclonal antibody. Western Blot analysis of MEF2D expression in HepG2.

[Protocol Download](#)

Western Blot (Transfected lysate)



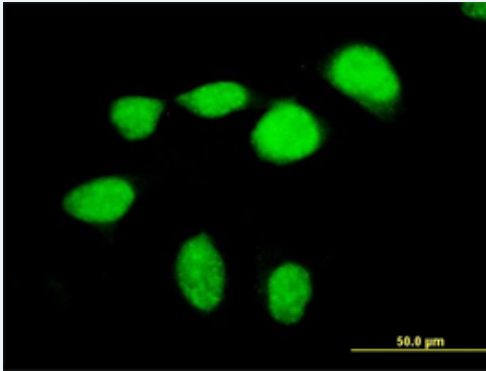
Western Blot analysis of MEF2D expression in transfected 293T cell line ([H00004209-T01](#)) by MEF2D MaxPab polyclonal antibody.

Lane 1: MEF2D transfected lysate(57.31 KDa).

Lane 2: Non-transfected lysate.

[Protocol Download](#)

Immunofluorescence



enlarge this image

Immunofluorescence of purified MaxPab antibody to MEF2D on HeLa cell. [antibody concentration 10 ug/ml]

[Protocol Download](#)

Gene Information

Entrez GeneID: [4209](#)

GeneBank [NM_005920.2](#)

Accession#:

Protein [NP_005911.1](#)

Accession#:

Gene Name: MEF2D

Gene Alias: DKFZp686I1536

Gene Description: myocyte enhancer factor 2D

Description:

Omim ID: [600663](#)

Gene Ontology: [Hyperlink](#)

Other Designations: MADS box transcription enhancer factor 2, polypeptide D (myocyte enhancer factor 2D),MEF2D/DAZAP1 fusion,OTTHUMP00000031810,myocyte enhancer factor 2D/deleted in azoospermia associated protein 1 fusion protein

Related Disease

[Cardiovascular Diseases](#) [Cerebral Hemorrhage](#) [Diabetes Mellitus](#)
[Diabetes Mellitus, Type 2](#) [Edema](#) [Genetic Predisposition to Disease](#) [Hypertension](#)
[Intracranial Hemorrhages](#) [Stroke](#) [Subarachnoid Hemorrhage](#)

[服務條款](#) | [隱私權政策](#) | [著作及商標](#) | [網站地圖](#)

©2016 亞諾法生技股份有限公司 Abnova Corporation. 版權所有.