



SZABO SCANDIC

Part of Europa Biosite

Produktinformation



Forschungsprodukte & Biochemikalien



Zellkultur & Verbrauchsmaterial



Diagnostik & molekulare Diagnostik



Laborgeräte & Service

Weitere Information auf den folgenden Seiten!
See the following pages for more information!



Lieferung & Zahlungsart

siehe unsere [Liefer- und Versandbedingungen](#)

Zuschläge

- Mindermengenzuschlag
- Trockeneiszuschlag
- Gefahrgutzuschlag
- Expressversand

SZABO-SCANDIC HandelsgmbH

Quellenstraße 110, A-1100 Wien

T. +43(0)1 489 3961-0

F. +43(0)1 489 3961-7

mail@szabo-scandic.com

www.szabo-scandic.com

[linkedin.com/company/szaboscandic](https://www.linkedin.com/company/szaboscandic) 



MEF2D purified MaxPab rabbit polyclonal antibody (D01P) MaxPab®

Catalog # : H00004209-D01P

規格 : [100 ug]

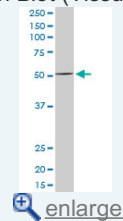
[List All](#)

Specification

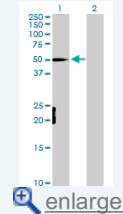
| | |
|---------------------------------|--|
| Product Description: | Rabbit polyclonal antibody raised against a full-length human MEF2D protein. |
| Immunogen: | MEF2D (NP_005911.1, 1 a.a. ~ 521 a.a) full-length human protein. |
| Sequence: | MGRKKIQIRITDERNRQVTFTKRKFGLMKKAYELSVLCDCEIALIIFNHSN KLFQYASTDMDKVLKYTEYNEPHESRTNADIETLRKKGFNGCDSPEPD GEDSLEQSPILLEDKYRRASEELDGLFRRYGSTVPAPNFAMPVTVPVSN QSSLQF SNPSGSLVTPSLVTSSLTDPRLSPQQPALQRNSVSPGLPQRP ASAGAMLGGDLNSANGACPSVGNNGYVSARASPGLLPVANGNSLNKVIP AKSPPPPTHSTQLGAPSRKPDLRVITSQAGKGLMHHLTEDHLDLNAQR LGVSQSTHSLTPVWVSATPSLLSQGLPFSSMPTAYNTDYQLTSAELSS LPAFSSPGGLSLGNVTAWQQPQQPQQPQQPQQPQQPQQPQQPQQP QQPQQPQQPQQSHLVPVSLSNLIPGSPLPHVGAALTVTTHPHISIKSE PVSPSRERSPAPPPAVFPAARPEPGDGLSSPAGGSYETGDRDDGRG DFGPTLGLLRPAPEPEAEAGSAVKRMRMLDTWTLK |
| Host: | Rabbit |
| Reactivity: | Human |
| Quality Control Testing: | Antibody reactive against mammalian transfected lysate. |
| Storage Buffer: | In 1x PBS, pH 7.4 |
| Storage Instruction: | Store at -20°C or lower. Aliquot to avoid repeated freezing and thawing. |
| MSDS: |  Download |
| Datasheet: |  Download |

Application Image

Western Blot (Tissue lysate)

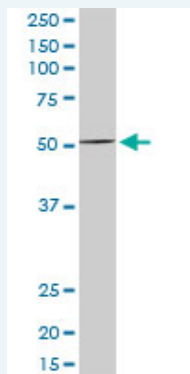


Western Blot (Transfected lysate)



Applications

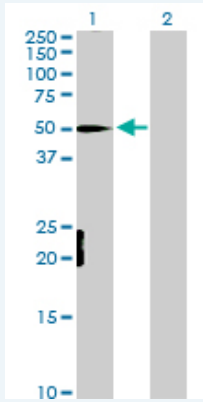
Western Blot (Tissue lysate)



MEF2D MaxPab rabbit polyclonal antibody. Western Blot analysis of MEF2D expression in human kidney.

 [Protocol Download](#)

Western Blot (Transfected lysate)



Western Blot analysis of MEF2D expression in transfected 293T cell line (H00004209-T01) by MEF2D MaxPab polyclonal antibody.

Lane 1: MEF2D transfected lysate(55.90 kDa).

Lane 2: Non-transfected lysate.

 [Protocol Download](#)

Gene Information

Entrez GeneID: [4209](#)

GeneBank Accession#: [NM_005920.2](#)

Protein Accession#: [NP_005911.1](#)

Gene Name: MEF2D

Gene Alias: DKFZp686I1536

Gene Description: myocyte enhancer factor 2D

Omim ID: [600663](#)

Gene Ontology: [Hyperlink](#)

Other Designations: MADS box transcription enhancer factor 2, polypeptide D (myocyte enhancer factor 2D),MEF2D/DAZAP1 fusion,OTTHUMP00000031810,myocyte enhancer factor 2D/deleted in azoospermia associated protein 1 fusion protein

Related Disease

[Cardiovascular Diseases](#) [Cerebral Hemorrhage](#) [Diabetes Mellitus](#)
[Diabetes Mellitus, Type 2](#) [Edema](#) [Genetic Predisposition to Disease](#) [Hypertension](#)
[Intracranial Hemorrhages](#) [Stroke](#) [Subarachnoid Hemorrhage](#)

[服務條款](#) | [隱私權政策](#) | [著作及商標](#) | [網站地圖](#)

©2016 亞諾法生技股份有限公司 Abnova Corporation. 版權所有.