



# SZABO SCANDIC

Part of Europa Biosite

## Produktinformation



Forschungsprodukte & Biochemikalien



Zellkultur & Verbrauchsmaterial



Diagnostik & molekulare Diagnostik



Laborgeräte & Service

Weitere Information auf den folgenden Seiten!  
See the following pages for more information!



### Lieferung & Zahlungsart

siehe unsere [Liefer- und Versandbedingungen](#)

### Zuschläge

- Mindermengenzuschlag
- Trockeneiszuschlag
- Gefahrgutzuschlag
- Expressversand

### SZABO-SCANDIC HandelsgmbH

Quellenstraße 110, A-1100 Wien

T. +43(0)1 489 3961-0

F. +43(0)1 489 3961-7

[mail@szabo-scandic.com](mailto:mail@szabo-scandic.com)

[www.szabo-scandic.com](http://www.szabo-scandic.com)

[linkedin.com/company/szaboscandic](https://www.linkedin.com/company/szaboscandic) 

## MEF2D monoclonal antibody (M02), clone 3A11

Catalog # : H00004209-M02

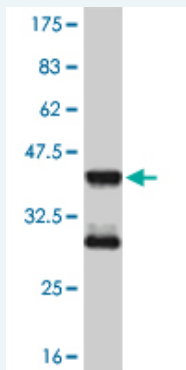
規格 : [ 100 ug ]

[List All](#)

### Specification

<b>Product Description:</b>	Mouse monoclonal antibody raised against a partial recombinant MEF2D.
<b>Immunogen:</b>	MEF2D (NP_005911.1, 256 a.a. ~ 351 a.a) partial recombinant protein with GST tag. MW of the GST tag alone is 26 KDa.
<b>Sequence:</b>	THSTQLGAPSRKPDLRVITSQAGKGLMHHLTEDHLDLNNQRLGVSQST HSLTTPVVSATPSSLSSQGLPFSSMPTAYNTDYQLTSAELSSLPAFS
<b>Host:</b>	Mouse
<b>Reactivity:</b>	Human
<b>Isotype:</b>	IgG2a Kappa

**Quality Control Testing:** Antibody Reactive Against Recombinant Protein.



Western Blot detection against Immunogen (36.56 KDa) .

**Storage Buffer:** In 1x PBS, pH 7.4

**Storage Instruction:** Store at -20°C or lower. Aliquot to avoid repeated freezing and thawing.

**MSDS:** [Download](#)

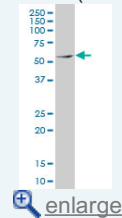
**Datasheet:** [Download](#)

### Applications

**Western Blot (Cell lysate)**

### Application Image

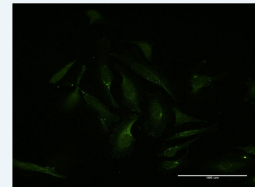
Western Blot (Cell lysate)



[enlarge](#)

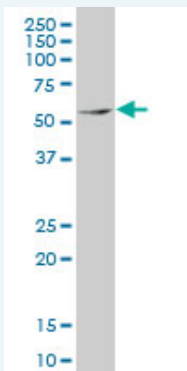
Western Blot (Recombinant protein)

Immunofluorescence



[enlarge](#)

ELISA



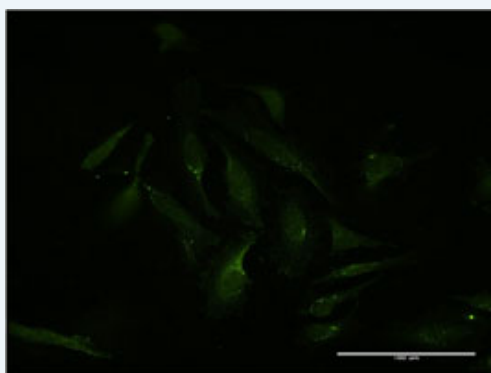
MEF2D monoclonal antibody (M02), clone 3A11 Western Blot analysis of MEF2D expression in K-562 ( Cat # L009V1 ).

[Protocol Download](#)

#### Western Blot (Recombinant protein)

[Protocol Download](#)

#### Immunofluorescence



[enlarge this image](#)

Immunofluorescence of monoclonal antibody to MEF2D on HeLa cell . [antibody concentration 10 ug/ml]

[Protocol Download](#)

#### ELISA

#### Gene Information

Entrez GeneID: [4209](#)

GeneBank [NM\\_005920](#)  
Accession#:

Protein [NP\\_005911.1](#)  
Accession#:

Gene Name: MEF2D

Gene Alias: DKFZp686I1536

Gene Description: myocyte enhancer factor 2D

Omim ID: [600663](#)

Gene Ontology: [Hyperlink](#)

Other Designations: MADS box transcription enhancer factor 2, polypeptide D (myocyte enhancer factor 2D),MEF2D/DAZAP1 fusion,OTTHUMP00000031810,myocyte enhancer factor 2D/deleted in azoospermia associated protein 1 fusion protein

## Related Disease

---

[Cardiovascular Diseases](#) [Cerebral Hemorrhage](#) [Diabetes Mellitus](#)  
[Diabetes Mellitus, Type 2](#) [Edema](#) [Genetic Predisposition to Disease](#) [Hypertension](#)  
[Intracranial Hemorrhages](#) [Stroke](#) [Subarachnoid Hemorrhage](#)

---

[服務條款](#) | [隱私權政策](#) | [著作及商標](#) | [網站地圖](#)

©2016 亞諾法生技股份有限公司 Abnova Corporation. 版權所有.