



# SZABO SCANDIC

Part of Europa Biosite

## Produktinformation



Forschungsprodukte & Biochemikalien



Zellkultur & Verbrauchsmaterial



Diagnostik & molekulare Diagnostik



Laborgeräte & Service

Weitere Information auf den folgenden Seiten!  
See the following pages for more information!



### Lieferung & Zahlungsart

siehe unsere [Liefer- und Versandbedingungen](#)

### Zuschläge

- Mindermengenzuschlag
- Trockeneiszuschlag
- Gefahrgutzuschlag
- Expressversand

### SZABO-SCANDIC HandelsgmbH

Quellenstraße 110, A-1100 Wien

T. +43(0)1 489 3961-0

F. +43(0)1 489 3961-7

[mail@szabo-scandic.com](mailto:mail@szabo-scandic.com)

[www.szabo-scandic.com](http://www.szabo-scandic.com)

[linkedin.com/company/szaboscandic](https://www.linkedin.com/company/szaboscandic) 

## MEF2D monoclonal antibody (M03), clone 1B8

Catalog # : H00004209-M03

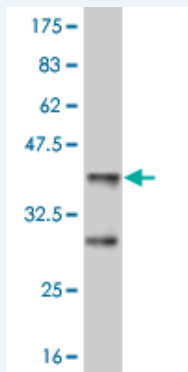
規格 : [ 100 ug ]

List All

### Specification

<b>Product Description:</b>	Mouse monoclonal antibody raised against a partial recombinant MEF2D.
<b>Immunogen:</b>	MEF2D (NP_005911.1, 256 a.a. ~ 351 a.a) partial recombinant protein with GST tag. MW of the GST tag alone is 26 KDa.
<b>Sequence:</b>	THSTQLGAPSRKPDLRVITSQAGKGLMHHLTEDHLDLNNQRLGVSQST HSLTTPVVSATPSSLQGLPFSSMPTAYNTDYQLTSAELSSLPAFS
<b>Host:</b>	Mouse
<b>Reactivity:</b>	Human
<b>Isotype:</b>	IgG2b Kappa

**Quality Control Testing:** Antibody Reactive Against Recombinant Protein.



Western Blot detection against Immunogen (36.56 KDa) .

**Storage Buffer:** In 1x PBS, pH 7.4

**Storage Instruction:** Store at -20°C or lower. Aliquot to avoid repeated freezing and thawing.

**MSDS:** [Download](#)

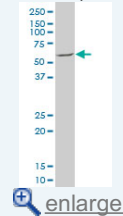
**Datasheet:** [Download](#)

### Applications

Western Blot (Cell lysate)

### Application Image

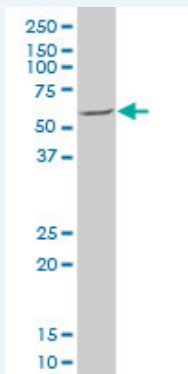
Western Blot (Cell lysate)



[enlarge](#)

Western Blot (Recombinant protein)


ELISA



MEF2D monoclonal antibody (M03), clone 1B8 Western Blot analysis of MEF2D expression in K-562 ( Cat # L009V1 ).

 [Protocol Download](#)

#### Western Blot (Recombinant protein)

 [Protocol Download](#)

#### ELISA

#### Gene Information

**Entrez GeneID:** [4209](#)

**GeneBank** [NM\\_005920](#)

**Accession#:**

**Protein** [NP\\_005911.1](#)

**Accession#:**

**Gene Name:** MEF2D

**Gene Alias:** DKFZp686I1536

**Gene** myocyte enhancer factor 2D

**Description:**

**Omim ID:** [600663](#)

**Gene Ontology:** [Hyperlink](#)

**Other Designations:** MADS box transcription enhancer factor 2, polypeptide D (myocyte enhancer factor 2D),MEF2D/DAZAP1 fusion,OTTHUMP00000031810,myocyte enhancer factor 2D/deleted in azoospermia associated protein 1 fusion protein

#### Related Disease

[Cardiovascular Diseases](#) [Cerebral Hemorrhage](#) [Diabetes Mellitus](#)  
[Diabetes Mellitus, Type 2](#) [Edema](#) [Genetic Predisposition to Disease](#) [Hypertension](#)  
[Intracranial Hemorrhages](#) [Stroke](#) [Subarachnoid Hemorrhage](#)