



SZABO SCANDIC

Part of Europa Biosite

Produktinformation



Forschungsprodukte & Biochemikalien



Zellkultur & Verbrauchsmaterial



Diagnostik & molekulare Diagnostik



Laborgeräte & Service

Weitere Information auf den folgenden Seiten!
See the following pages for more information!



Lieferung & Zahlungsart

siehe unsere [Liefer- und Versandbedingungen](#)

Zuschläge

- Mindermengenzuschlag
- Trockeneiszuschlag
- Gefahrgutzuschlag
- Expressversand

SZABO-SCANDIC HandelsgmbH

Quellenstraße 110, A-1100 Wien

T. +43(0)1 489 3961-0

F. +43(0)1 489 3961-7

mail@szabo-scandic.com

www.szabo-scandic.com

[linkedin.com/company/szaboscandic](https://www.linkedin.com/company/szaboscandic) 

MEF2D monoclonal antibody (M04), clone 3F8

Catalog # : H00004209-M04

規格 : [100 ug]

[List All](#)

Specification

Product Description:	Mouse monoclonal antibody raised against a partial recombinant MEF2D.
Immunogen:	MEF2D (NP_005911.1, 256 a.a. ~ 351 a.a) partial recombinant protein with GST tag. MW of the GST tag alone is 26 KDa.
Sequence:	THSTQLGAPSRKPDLRVITSQAGKGLMHHLTEDHLDLNNQRLGVSQST HSLTTPVVSATPSSLSSQGLPFSSMPTAYNTDYQLTSAELSSLPAFS
Host:	Mouse
Reactivity:	Human
Isotype:	IgG2a Kappa

Quality Control Testing: Antibody Reactive Against Recombinant Protein.



Western Blot detection against Immunogen (36.56 KDa) .

Storage Buffer: In 1x PBS, pH 7.4

Storage Instruction: Store at -20°C or lower. Aliquot to avoid repeated freezing and thawing.

MSDS: [Download](#)

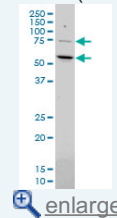
Datasheet: [Download](#)

Applications

Western Blot (Cell lysate)

Application Image

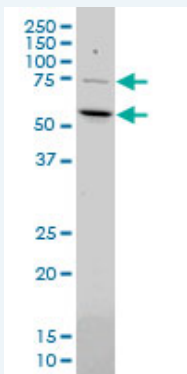
Western Blot (Cell lysate)



[enlarge](#)

Western Blot (Recombinant protein)

ELISA



MEF2D monoclonal antibody (M04), clone 3F8 Western Blot analysis of MEF2D expression in HeLa (Cat # L013V1).

 [Protocol Download](#)

Western Blot (Recombinant protein)

 [Protocol Download](#)

ELISA

Gene Information

Entrez GeneID: [4209](#)

GeneBank [NM_005920](#)

Accession#:

Protein [NP_005911.1](#)

Accession#:

Gene Name: MEF2D

Gene Alias: DKFZp686I1536

Gene myocyte enhancer factor 2D

Description:

Omim ID: [600663](#)

Gene Ontology: [Hyperlink](#)

Other Designations: MADS box transcription enhancer factor 2, polypeptide D (myocyte enhancer factor 2D),MEF2D/DAZAP1 fusion,OTTHUMP00000031810,myocyte enhancer factor 2D/deleted in azoospermia associated protein 1 fusion protein

Related Disease

[Cardiovascular Diseases](#) [Cerebral Hemorrhage](#) [Diabetes Mellitus](#)
[Diabetes Mellitus, Type 2](#) [Edema](#) [Genetic Predisposition to Disease](#) [Hypertension](#)
[Intracranial Hemorrhages](#) [Stroke](#) [Subarachnoid Hemorrhage](#)