



# SZABO SCANDIC

Part of Europa Biosite

## Produktinformation



Forschungsprodukte & Biochemikalien



Zellkultur & Verbrauchsmaterial



Diagnostik & molekulare Diagnostik



Laborgeräte & Service

Weitere Information auf den folgenden Seiten!  
See the following pages for more information!



### Lieferung & Zahlungsart

siehe unsere [Liefer- und Versandbedingungen](#)

### Zuschläge

- Mindermengenzuschlag
- Trockeneiszuschlag
- Gefahrgutzuschlag
- Expressversand

### SZABO-SCANDIC HandelsgmbH

Quellenstraße 110, A-1100 Wien

T. +43(0)1 489 3961-0

F. +43(0)1 489 3961-7

[mail@szabo-scandic.com](mailto:mail@szabo-scandic.com)

[www.szabo-scandic.com](http://www.szabo-scandic.com)

[linkedin.com/company/szaboscandic](https://www.linkedin.com/company/szaboscandic) 

## MAP3K1 monoclonal antibody (M01), clone 2F6

Catalog # : H00004214-M01

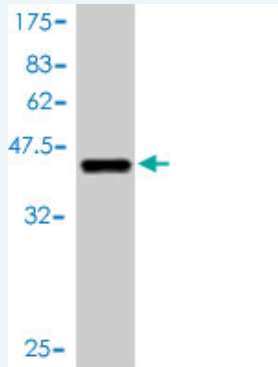
規格 : [ 100 ug ]

[List All](#)

### Specification

<b>Product Description:</b>	Mouse monoclonal antibody raised against a partial recombinant MAP3K1.
<b>Immunogen:</b>	MAP3K1 (XP_042066, 1211 a.a. ~ 1310 a.a) partial recombinant protein with GST tag. MW of the GST tag alone is 26 KDa.
<b>Sequence:</b>	SKNSMTLDLNSSSKCDDSF GCSNSSNAVPSDET VFTPVEEKRLDVN TELNSSIEDLLEASMPSSDTTVTFKSEVAVLSPEKAENDDTYKDDVNHQ K
<b>Host:</b>	Mouse
<b>Reactivity:</b>	Human
<b>Isotype:</b>	IgG2a kappa

**Quality Control Testing:** Antibody Reactive Against Recombinant Protein.



Western Blot detection against Immunogen (36.63 KDa) .

**Storage Buffer:** In 1x PBS, pH 7.4

**Storage Instruction:** Store at -20°C or lower. Aliquot to avoid repeated freezing and thawing.

**MSDS:** [Download](#)

**Datasheet:** [Download](#)

### Applications

**Western Blot (Recombinant protein)**

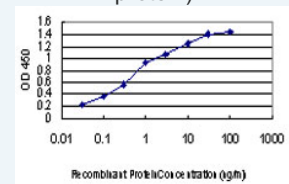
[Protocol Download](#)

**Sandwich ELISA (Recombinant protein)**

### Application Image

Western Blot (Recombinant protein)

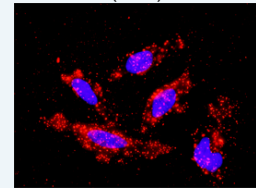
Sandwich ELISA (Recombinant protein)



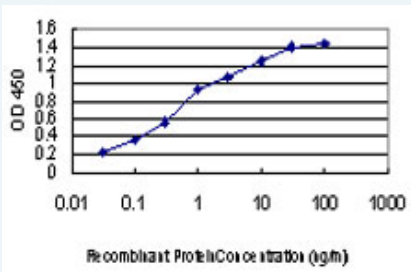
[enlarge](#)

ELISA

*In situ* Proximity Ligation Assay (Cell)



[enlarge](#)

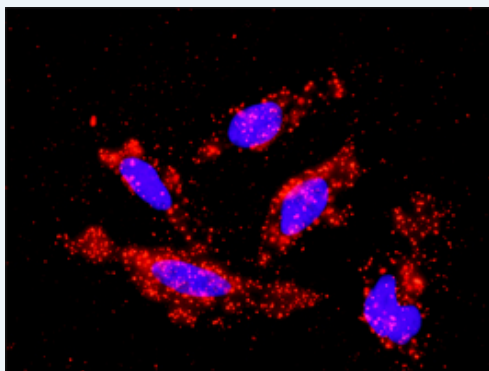


Detection limit for recombinant GST tagged MAP3K1 is approximately 0.03ng/ml as a capture antibody.

 [Protocol Download](#)

## ELISA

### *In situ* Proximity Ligation Assay (Cell)



Proximity Ligation Analysis of protein-protein interactions between MAPK3 and MAP3K1. HeLa cells were stained with anti-MAPK3 rabbit purified polyclonal 1:1200 and anti-MAP3K1 mouse monoclonal antibody 1:50. Each red dot represents the detection of protein-protein interaction complex, and nuclei were counterstained with DAPI (blue).

## Gene Information

Entrez GeneID: [4214](#)

GeneBank [XM\\_042066](#)  
Accession#:

Protein [XP\\_042066](#)  
Accession#:

Gene Name: MAP3K1

Gene Alias: MAPKKK1,MEKK,MEKK1

Gene Description: mitogen-activated protein kinase kinase kinase 1

Omim ID: [600982](#)

Gene Ontology: [Hyperlink](#)

**Gene Summary:** MAP3K, or MEK kinase, is a serine/threonine kinase that occupies a pivotal role in a network of phosphorylating enzymes integrating cellular responses to a number of mitogenic and metabolic stimuli, including insulin (MIM 176730) and many growth factors.[supplied by OMIM

Other Designations: MAP/ERK kinase kinase 1,MAPK/ERK kinase kinase 1,MEK kinase 1,OTTHUMP00000065818

## Gene Pathway

[GnRH signaling pathway](#) [MAPK signaling pathway](#) [Neurotrophin signaling pathway](#)

[Ubiquitin mediated proteolysis](#)

### **Related Disease**

---

[Adenocarcinoma](#) [Arthritis, Rheumatoid](#) [Breast cancer](#) [Breast Neoplasms](#)  
[Cardiovascular Diseases](#) [Colitis, Ulcerative](#) [Crohn Disease](#) [Crohn's disease](#)  
[Diabetes Mellitus, Type 2](#) [Disease Susceptibility](#) [Edema](#) [Endometrial Neoplasms](#)  
[Genetic Predisposition to Disease](#) [Lymphatic Metastasis](#) [Neoplasm Invasiveness](#)  
[Neoplasms, Hormone-Dependent](#) [Ovarian cancer](#) [Ovarian Neoplasms](#)  
[Pancreatic Neoplasms](#)

---

[服務條款](#) | [隱私權政策](#) | [著作及商標](#) | [網站地圖](#)

©2016 亞諾法生技股份有限公司 Abnova Corporation. 版權所有.